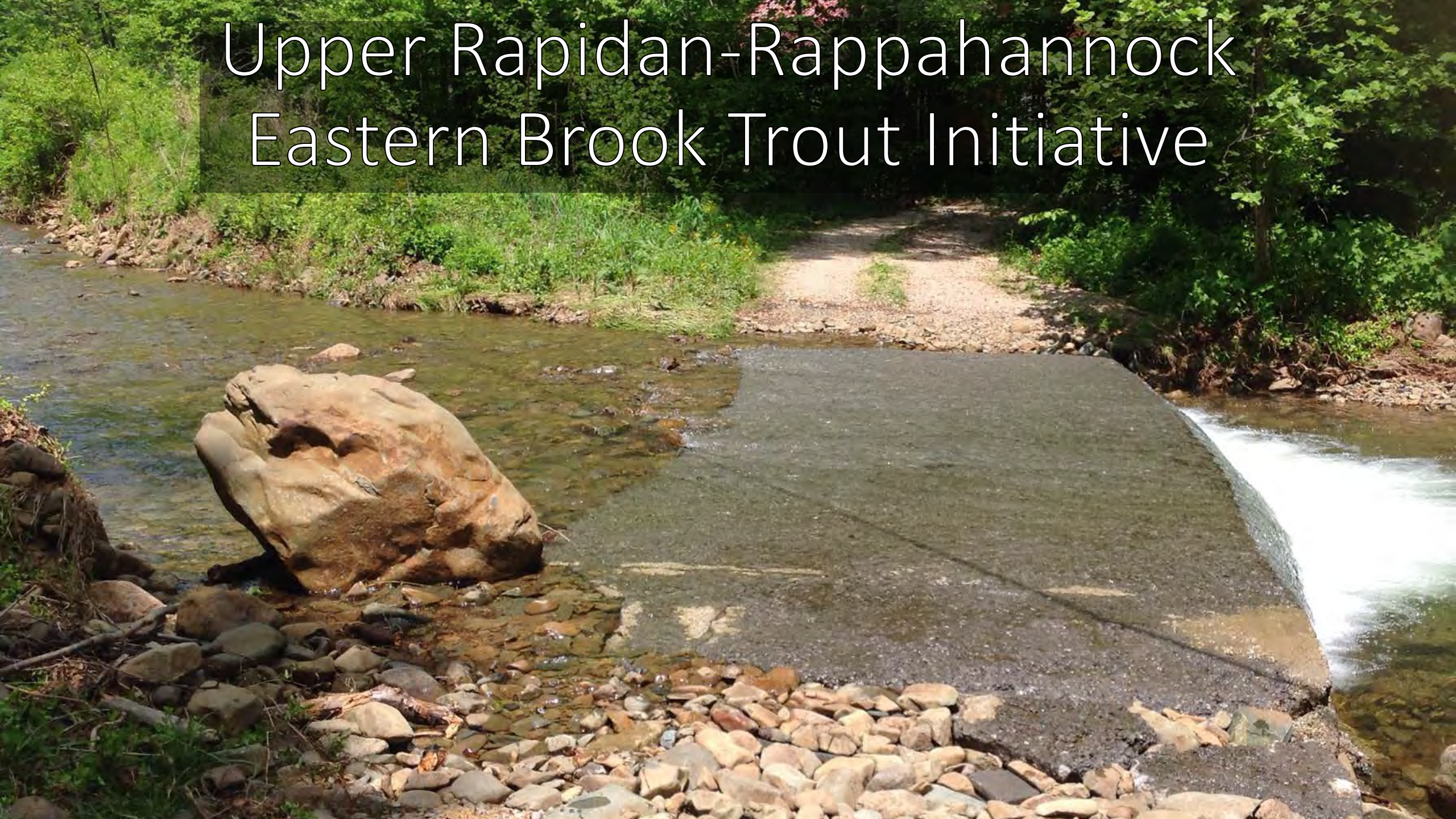


Upper Rapidan-Rappahannock Eastern Brook Trout Initiative



OUTLINE

- *Overview/Background*
- *PEC/TU Fish Passage Assessment*
- *Prioritization Study*
- *Jumpstart Projects*
 - ✓ *Bolton Branch*
 - ✓ *Kinsey Run*
- *Next Steps*



The Rapidan - Upper Rappahannock Eastern Brook Trout Initiative

At a Glance:

- Formed in 2015 as a unique, partnership with a range of expertise including advocacy, planning, land owner relations, conservation, and habitat restoration science.
- Cooperation and collaboration to protect, restore, and enhance native brook trout populations within the Rapidan and Upper Rappahannock River watersheds.

Mission:

Develop a comprehensive partnership whose overall vision includes the improvement of water quality and critical habitat with the goal of sustaining native populations of Eastern Brook Trout in the Upper Rapidan and Rappahannock watersheds.



Strategic Plan
2016-2018



The Rapidan-Upper Rappahannock Eastern Brook Trout Initiative



Creating the opportunity for a meaningful collaborative effort to address the overlap of related issues contributing to the decline of the eastern brook trout, in the Rappahannock and Rapidan Headwaters.





Peter Hujik
Land Conservation Officer, Piedmont Environmental Council

Celia Vuocolo
Habitat & Stewardship Specialist, Piedmont Environmental Council

Bryan Hofmann
Programs Manager, Friends of the Rappahannock

Brian Wagner
Principal Biologist, Ecosystem Services

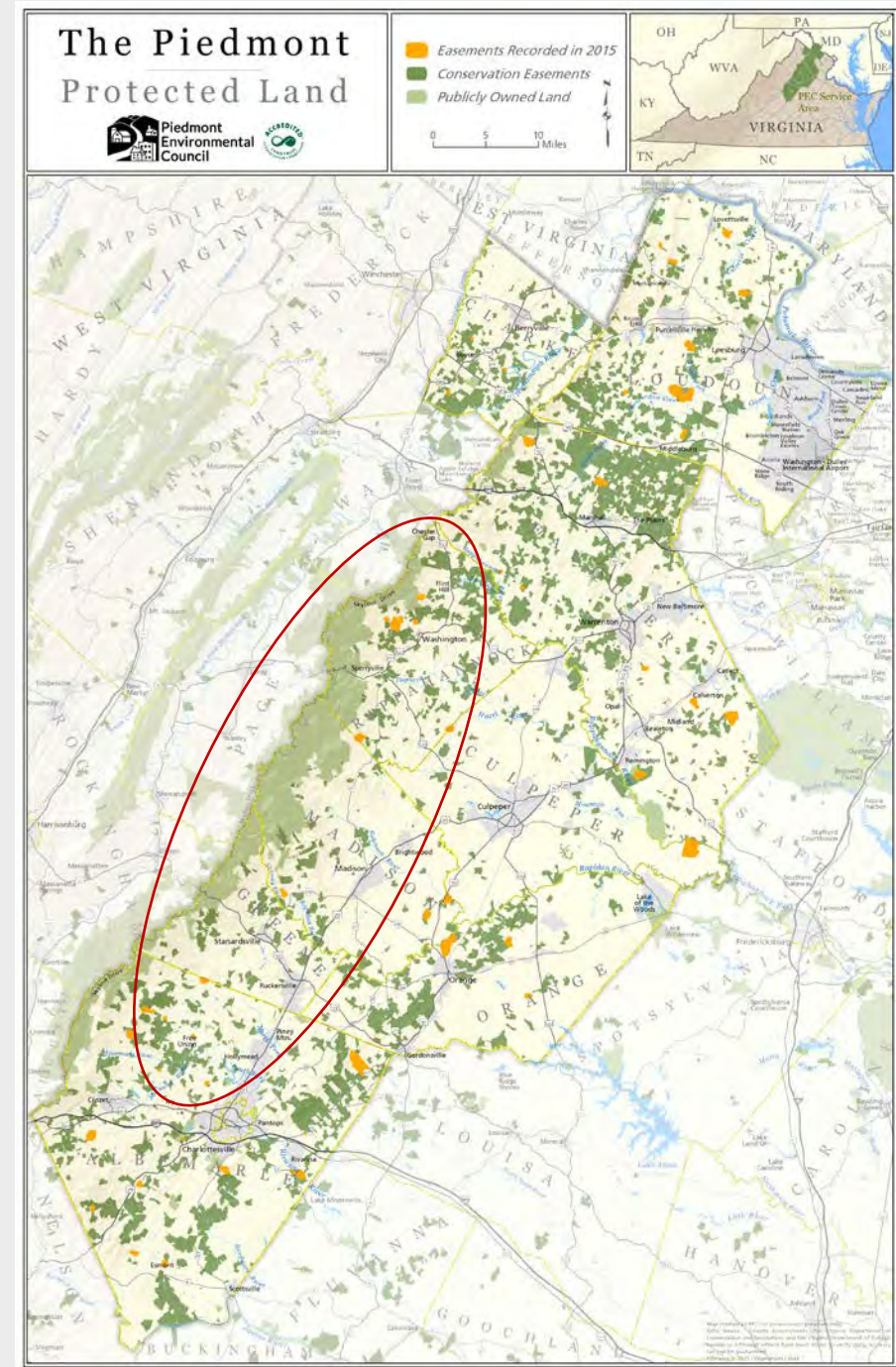
Kyle Ashmun
Ecological Restoration Specialist, Ecosystem Services

Annemarie Abbondanzo
Environmental Specialist, Ecosystem Services

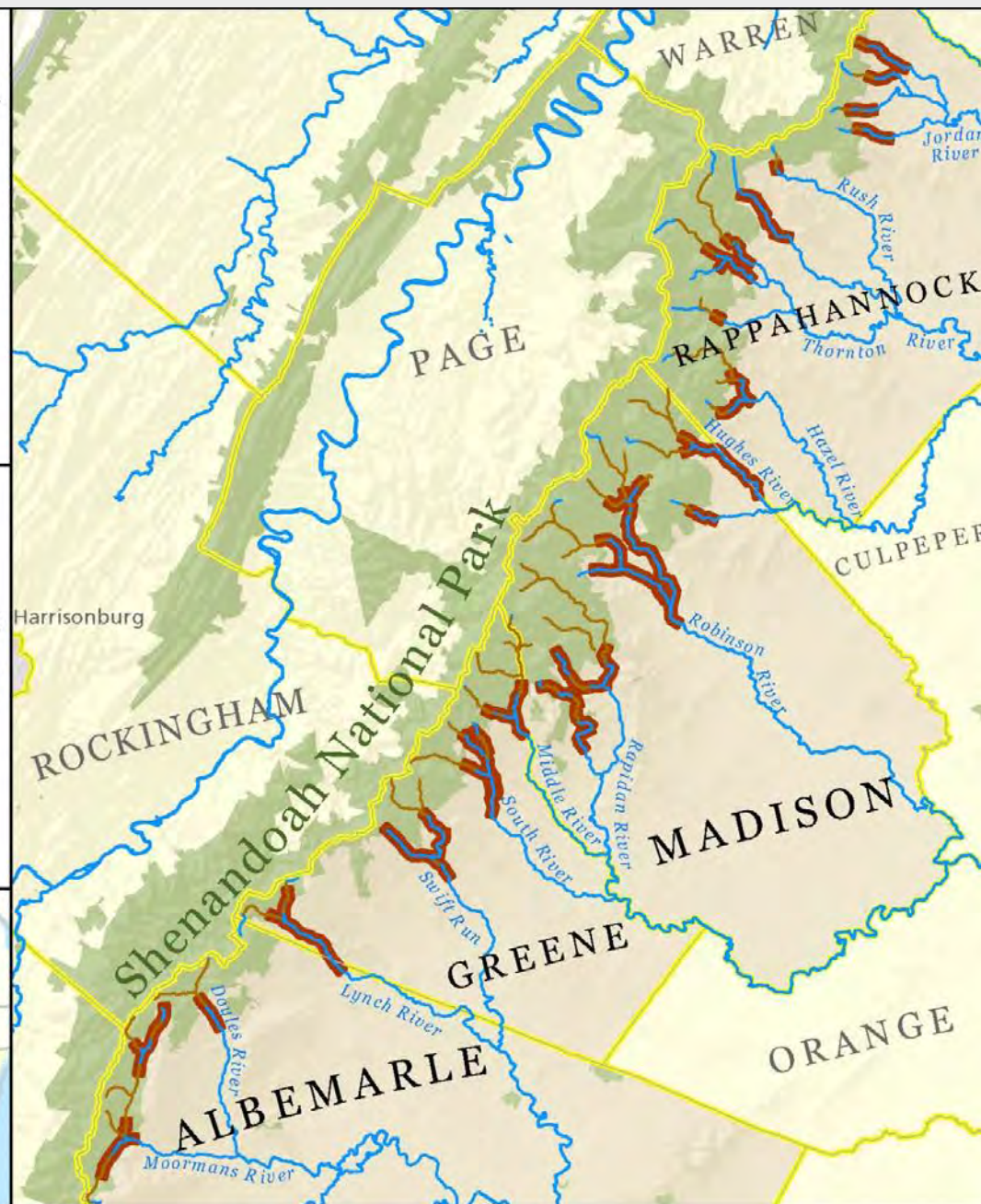
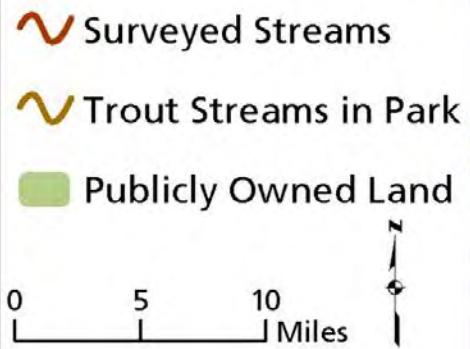
Trout Streams

Central Virginia

- Trout streams are an important resource to local residents and visitors
- 2012 Partnership with PEC and Trout Unlimited



PEC Trout Stream Crossing Surveys



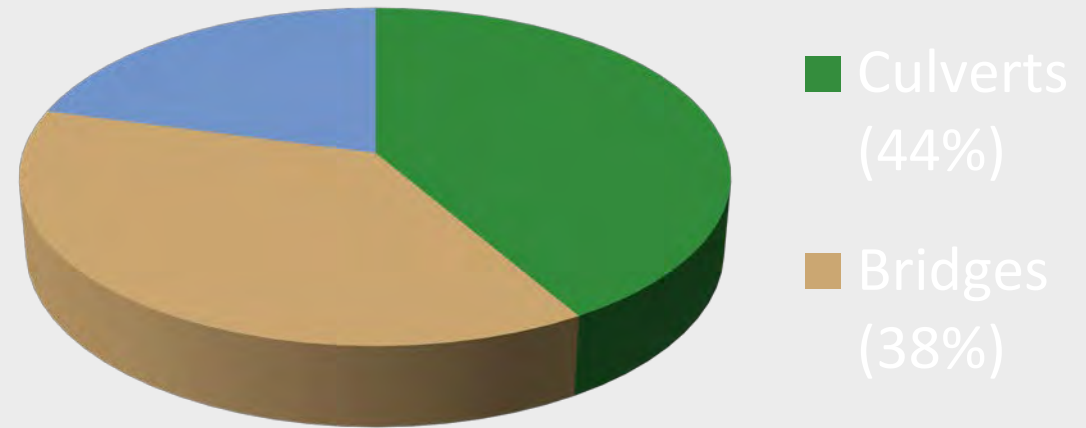


Conway River

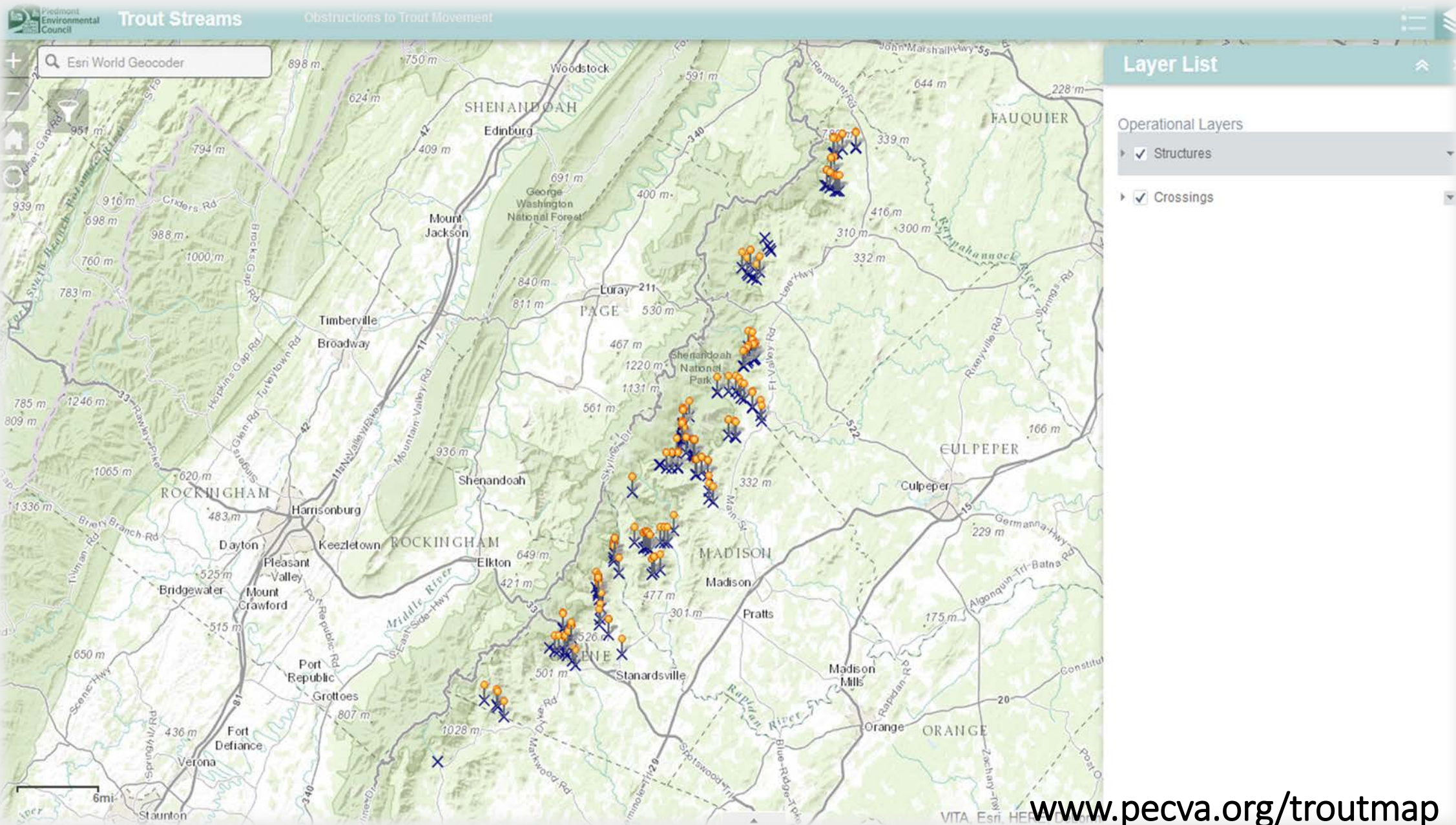
Findings

- 133 crossings assessed
- 255 structures assessed
- 40 crossings *not* assessed
- 35% Private
- 65% VDOT (50% of VDOT structures are bridges)

Crossings by Type

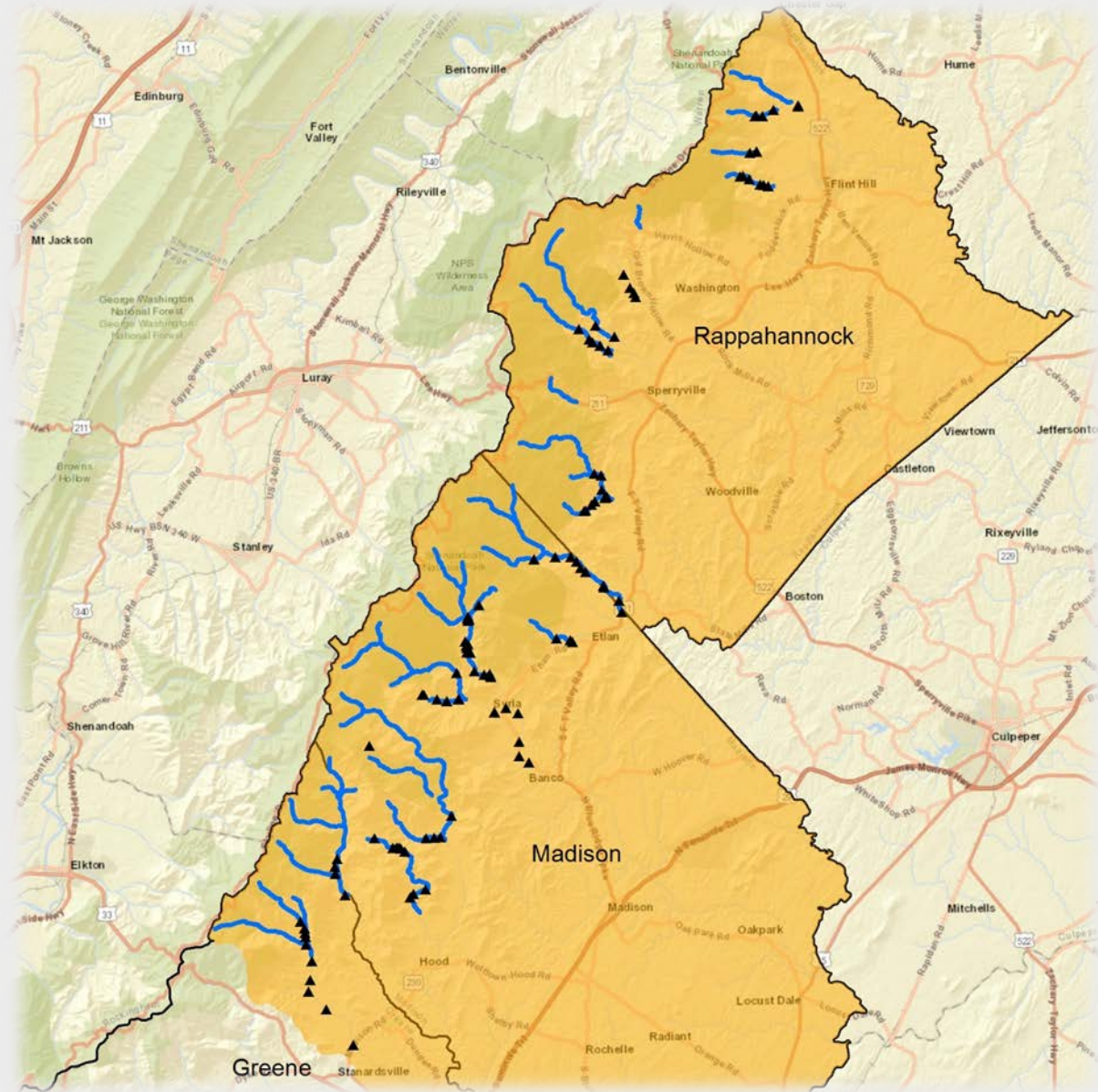


- 15% of structures have an outlet drop (perch) greater than 1'
- 20% of crossings have severe channel constriction



Prioritization Study

- 1) Goal: Identify sites that will improve/restore EBT habitat
- 2) Separate evaluation for Private vs. Public (VDOT) in each County (Greene, Madison, Rappahannock)
- 3) Develop weighted criteria to rank 113 sites using input from multiple stakeholders/interests (MCDA)



Prioritization Study

Criteria Examples

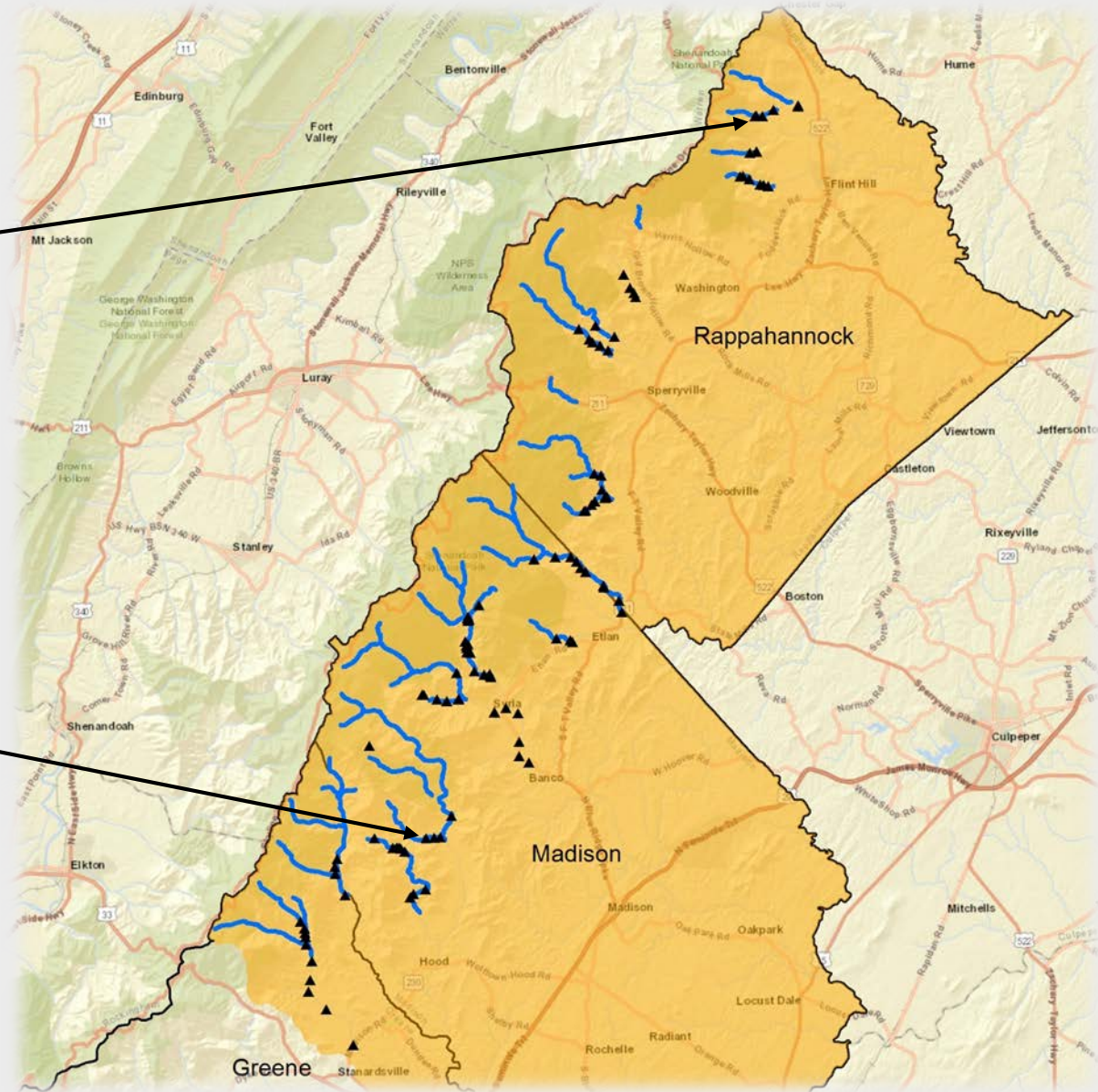
- Impediment vs. Blockage
- Landowner Interest/Willingness
- Crossing Stability/Structural Condition
- Existing EBT population status (Allopatric vs. Sympatric)
- Re-introduction of Brown Trout
- Proximity to TMDL impairment
- Water Quality (ph, temp, pollutants)
- Proximity to potential habitat restoration upstream & downstream
- Implementation Cost



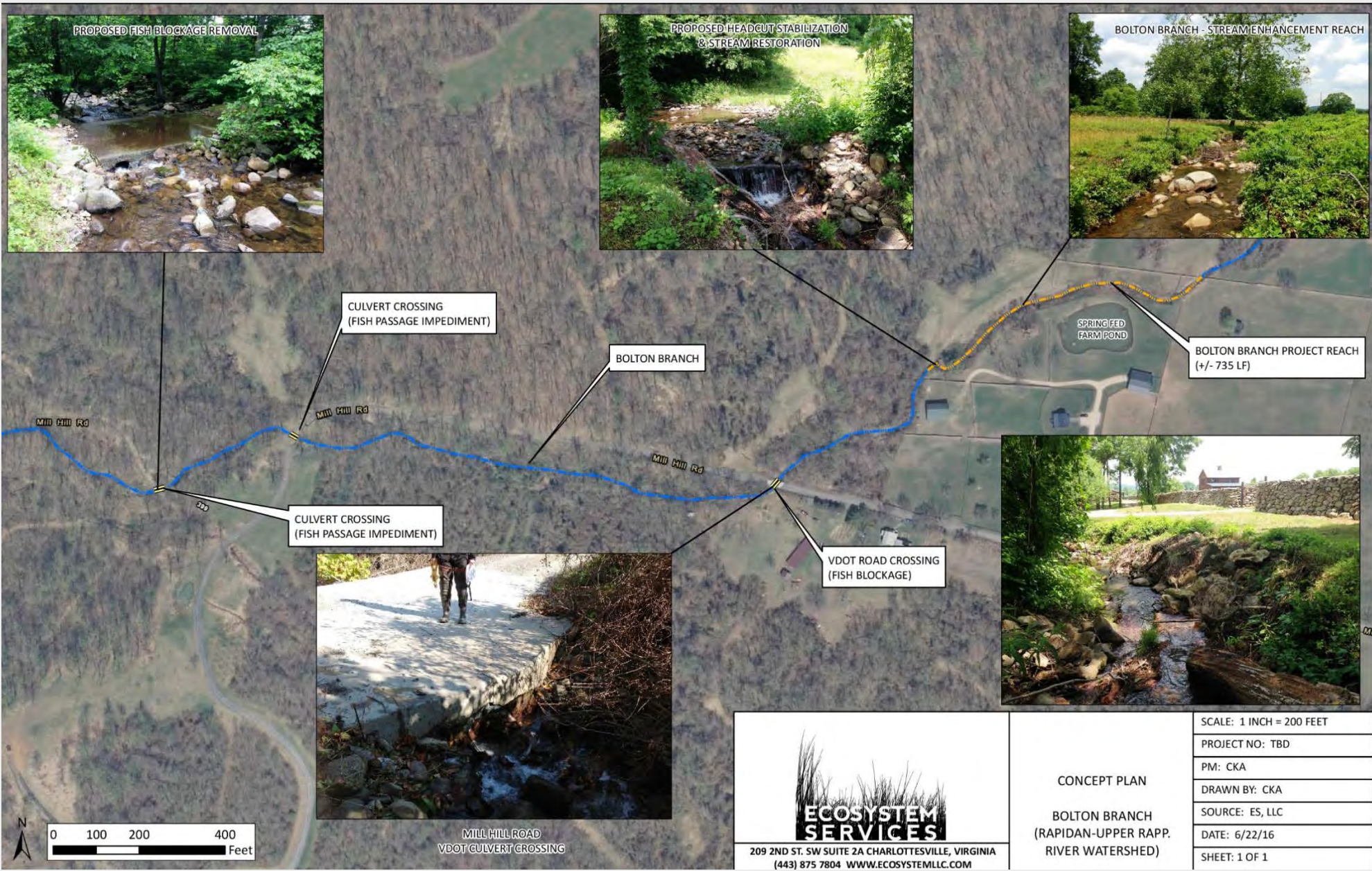
Jump Start Projects

➤ Bolton Branch

➤ Kinsey Run



Bolton Branch



ECOSYSTEM SERVICES

209 2ND ST. SW SUITE 2A CHARLOTTEVILLE, VIRGINIA
(443) 875 7804 WWW.ECOSYSTEMLLC.COM

CONCEPT PLAN BOLTON BRANCH (RAPIDAN-UPPER RAPP. RIVER WATERSHED)	SCALE: 1 INCH = 200 FEET
	PROJECT NO: TBD
	PM: CKA
	DRAWN BY: CKA
	SOURCE: ES, LLC
	DATE: 6/22/16
	SHEET: 1 OF 1

Bolton Branch



Bolton Branch

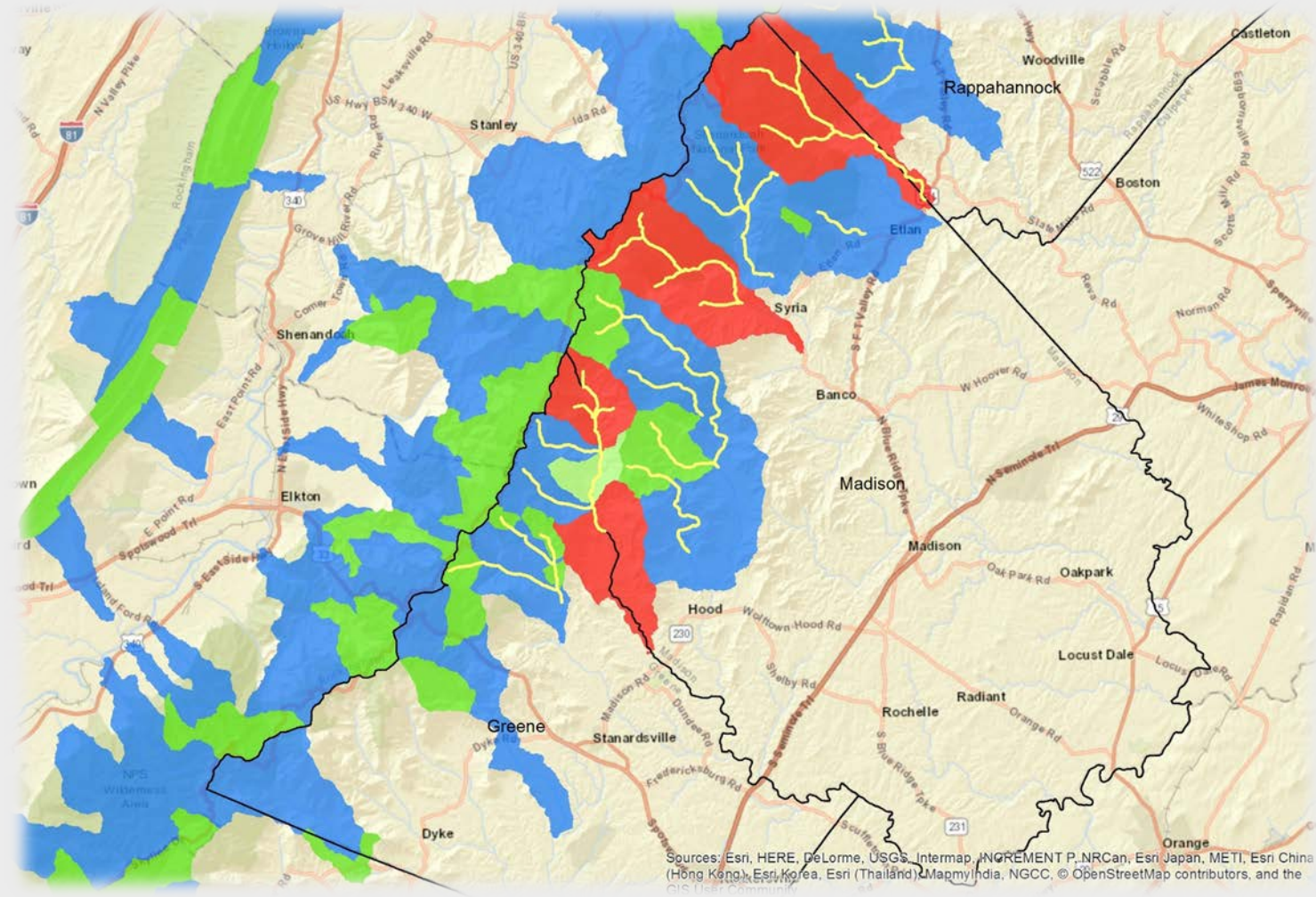




Kinsey Run

Next Steps

- 1) Design/Implement Jump Start Projects outside of TOY restrictions (October-March)
- 2) EBT Population Mapping (Temperature Monitoring and Fish Sampling) with DGIF and other interested parties
- 3) Public Outreach/Partnerships



Thank You!
Questions?

