

GREENWAYS, TRAILS AND ECONOMIC DEVELOPMENT

2010 RRRC Living Towns
Culpeper Planning Workshop

David Brickley











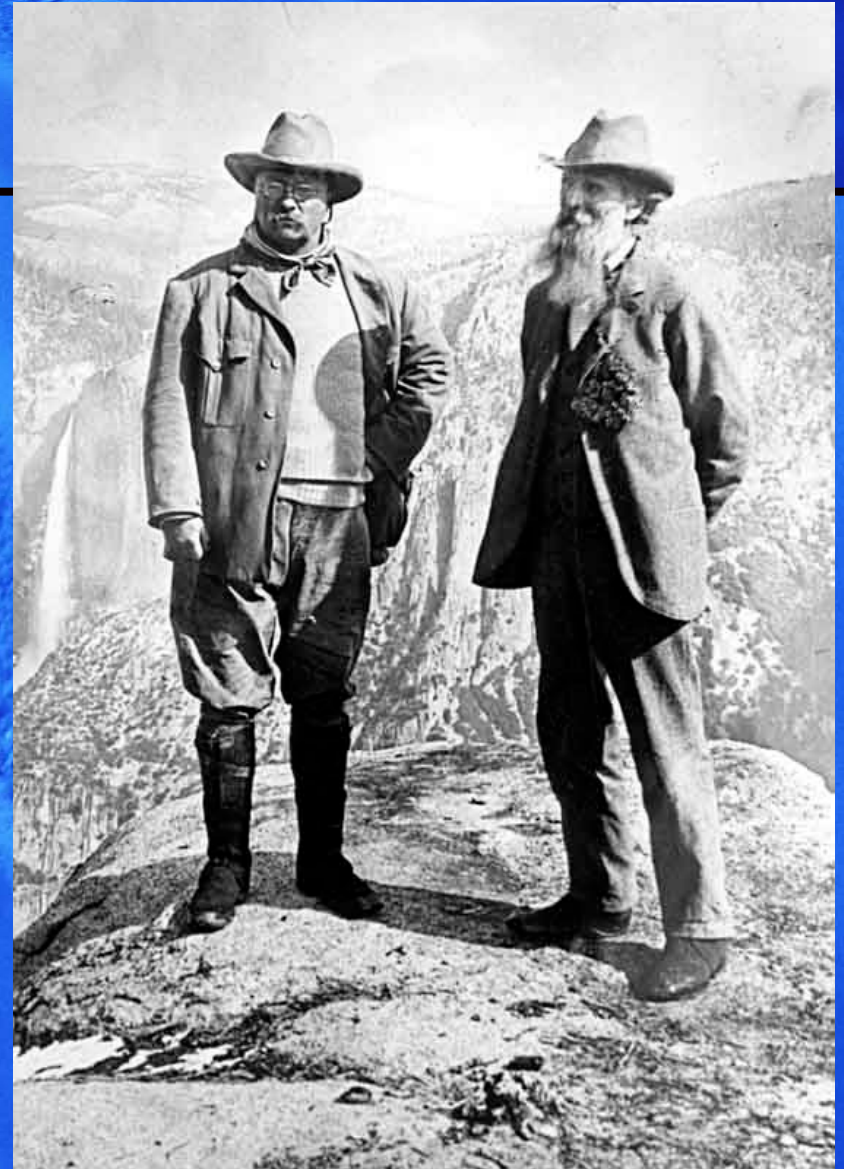


EVERY
PROJECT
NEEDS A
HERO!



“In utilizing and
conserving the natural
resources of the Nation,
the one characteristic
more essential than any
other is foresight”

President Theodore Roosevelt
Jamestown, Virginia
June 10, 1907



HELEN, GEORGIA

BEFORE



HELEN, GEORGIA

AFTER



MONEY MAGAZINE'S BEST PLACES TO LIVE - 2010

1. EDEN PRAIRIE, MINNESOTA
2. COLUMBIA, ELLICOTT CITY,
MARYLAND
3. NEWTON, MASSACHUSETTS
4. BELLEVUE, WASHINGTON
5. MCKINNEY, TEXAS



TOURISM AND TRAVEL IS ONE OF AMERICA'S
LARGEST INDUSTRIES. IN 2008 THERE WERE
\$740 BILLION SPENT IN DIRECT TRAVEL
EXPENDITURES BY DOMESTIC AND
INTERNATIONAL TRAVELERS.

THE TOURISM AND TRAVEL INDUSTRY
REPRESENTS ONE OF AMERICA'S LARGEST
EMPLOYERS WITH 7.7 MILLION DIRECT TRAVEL-
GENERATED JOBS AT \$189 BILLION IN TRAVEL-
GENERATED PAYROLL

VIRGINIA TOURISM IS A \$19 BILLION/ YEAR
INDUSTRY EMPLOYING 210,000 PEOPLE

TOURISTS SPEND "**GREEN MONEY**" WHICH DON'T
REQUIRE GOVERNMENT SERVICES THAT THE
LOCAL COMMUNITIES NEED

"COMPACT, WALKABLE DEVELOPMENTS CAN PROVIDE ECONOMIC BENEFITS TO REAL ESTATE DEVELOPERS THROUGH HIGHER SALE PRICES, ENHANCED MARKETABILITY AND FASTER SALES OR LEASES THAN CONVENTIONAL DEVELOPMENT"

American Trails

RICHMOND TIMES-DISPATCH EDITORIAL

August 21, 2006

"WHEN JURISDICTIONS APPROVE NEW SUBDIVISIONS, CORPORATE CAMPUSES, AND SHOPPING MALLS, THEY OUGHT TO CONSIDER REQUIRING DEVELOPERS TO CREATE TRAILS AND PATHS. INDEED, EVEN NOW SMART DEVELOPERS OFTEN INCLUDE TRAILS IN THEIR GREENSWARDS."

"TRAILS BELONG IN ALL REGIONS AND IN ALL TYPES OF COMMUNITIES – RURAL, SUBURBAN, AND URBAN. IT WILL BE TO SOCIETY'S LASTING BENEFIT IF ENTHUSIASM FOR TRAILS PROVES MORE THAN A FAD."



SHOP AT CANAL PLACE
FESTIVAL GROUNDS
C&O CANAL / TOWPATH

ike Rentals
& Service
Shop
OPEN





“OPEN SPACES SUCH AS PARKS AND RECREATION AREA CAN HAVE A POSITIVE EFFECT ON NEARBY RESIDENTIAL PROPERTY VALUES, AND CAN LEAD TO PROPORTIONATELY HIGHER PROPERTY TAX REVENUES FOR LOCAL GOVERNMENTS”

American Trails















SEPTEMBER 11TH NATIONAL MEMORIAL TRAIL

A proposed national trail connecting the World Trade Center, Flight 93 and Pentagon Memorials

