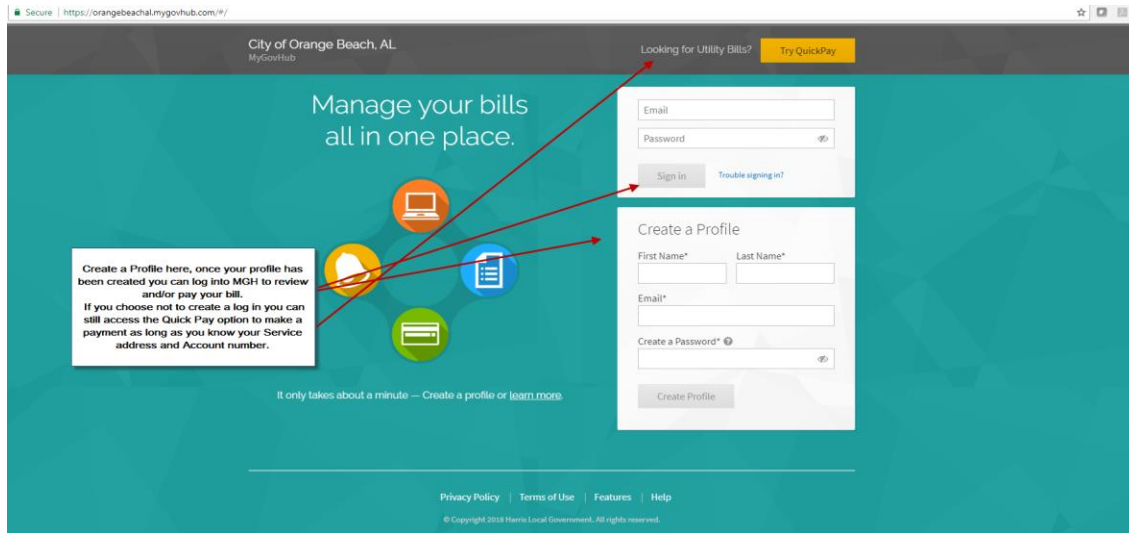
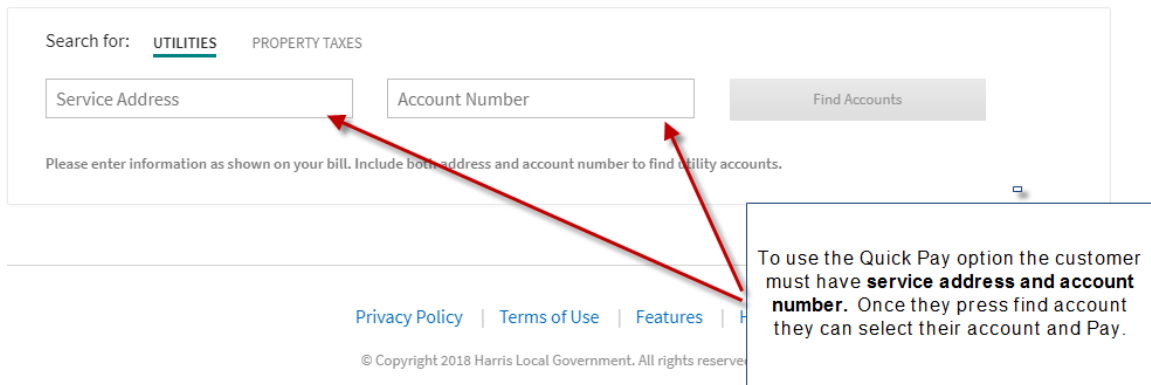


Customer Instructions:

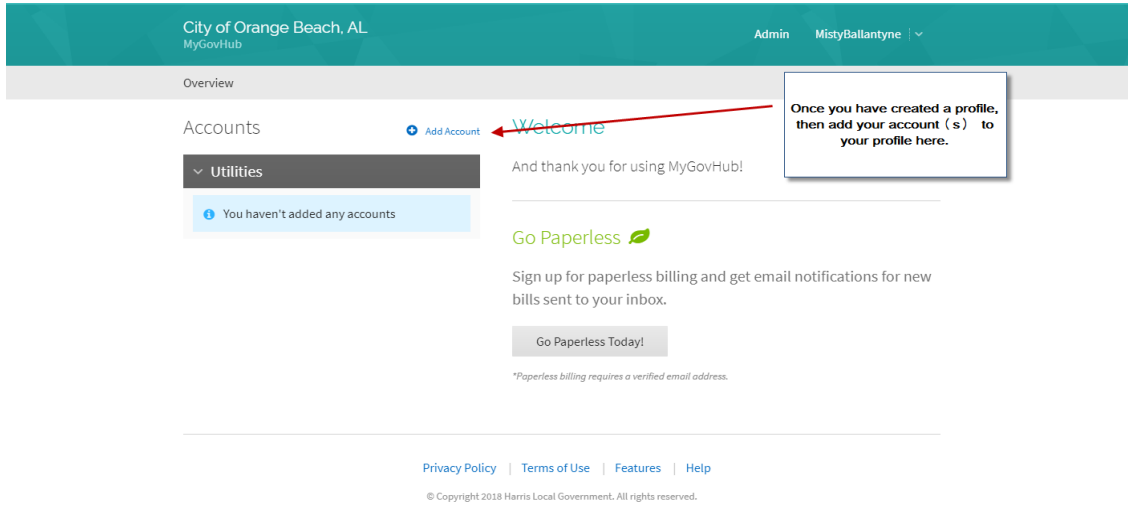


To use the Quick Pay option they do not have to set up a profile, they can simply key in address and account number and pay with their credit card. When keying in the Service Address you can type in the first 3 characters of the Address and the print will turn green letting you know it can search on that criteria.

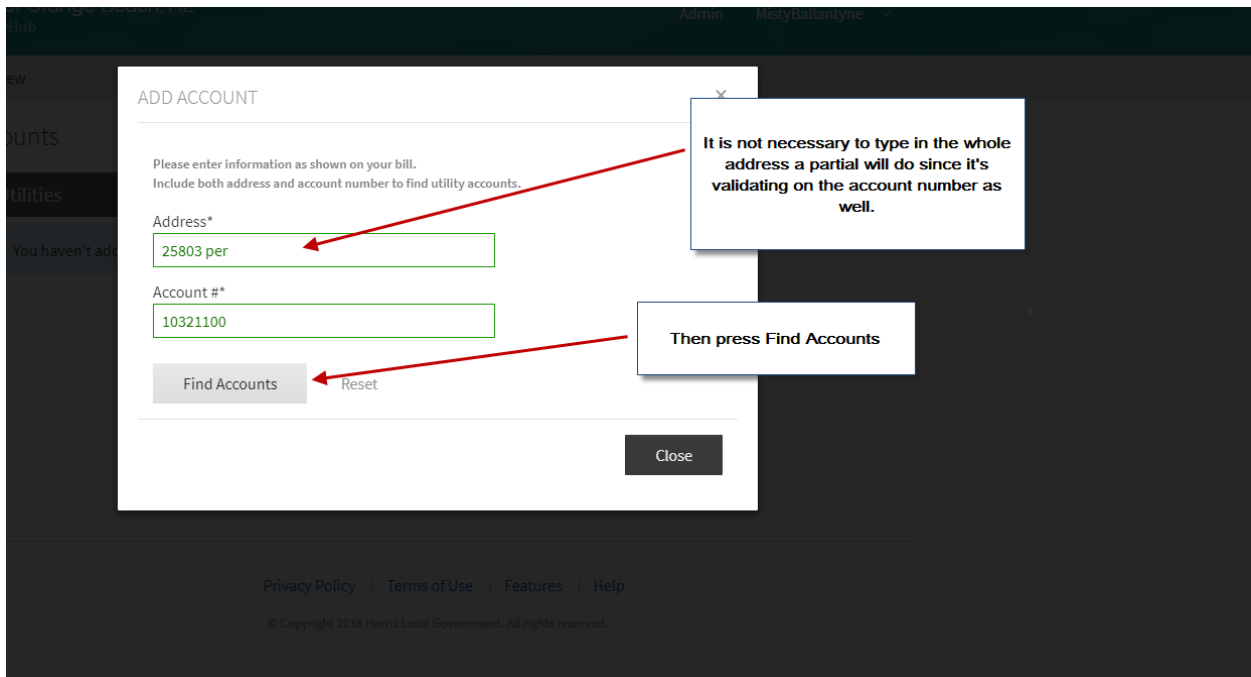
QuickPay



Step 2: To set up a Profile they must enter an email address and password, then they will need to add their account to their profile:



Step 3:



Step 4

The image shows a web interface for adding utility accounts. At the top is a modal window titled "ADD ACCOUNT" with a close button (X). Below the title, there is a prompt: "Please enter information as shown on your bill. Include both address and account number to find utility accounts." There are two input fields: "Address*" containing "25803 per" and "Account #*" containing "10321100". Below these fields are two buttons: "Find Accounts" and "Reset". A section titled "Matching Accounts" contains a single entry: " Utility - ABC STORE #239 25803 PERDIDO BEACH BLVD / 10321100". Below this entry is an "Add Accounts" button. At the bottom right of the modal is a "Close" button. A white callout box on the right contains the text: "Click the box next to the property you wish to add then press Add Accounts. You can have more than one account on your profile." Two red arrows originate from this callout box; one points to the checked checkbox in the "Matching Accounts" section, and the other points to the "Add Accounts" button.

ADD ACCOUNT

Please enter information as shown on your bill.
Include both address and account number to find utility accounts.

Address*
25803 per

Account #*
10321100

Find Accounts Reset

Matching Accounts

Utility - ABC STORE #239
25803 PERDIDO BEACH BLVD / 10321100

Add Accounts

Close

Click the box next to the property you wish to add then press Add Accounts. You can have more than one account on your profile.