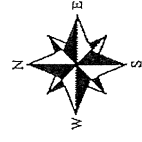
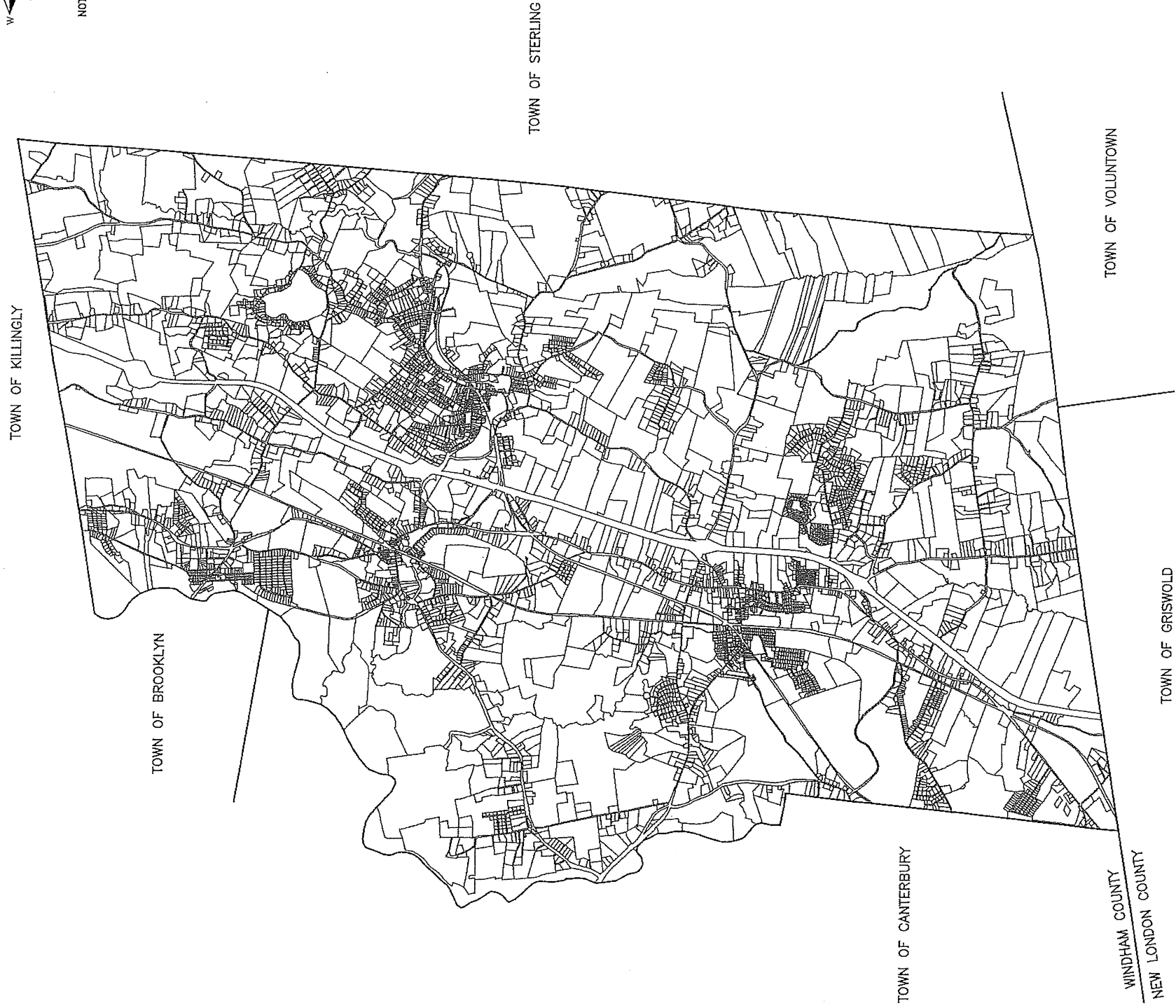


TOWN OF PLAINFIELD, CONNECTICUT
PLAN OF CONSERVATION AND DEVELOPMENT
POLICIES PLAN, 2018-2028

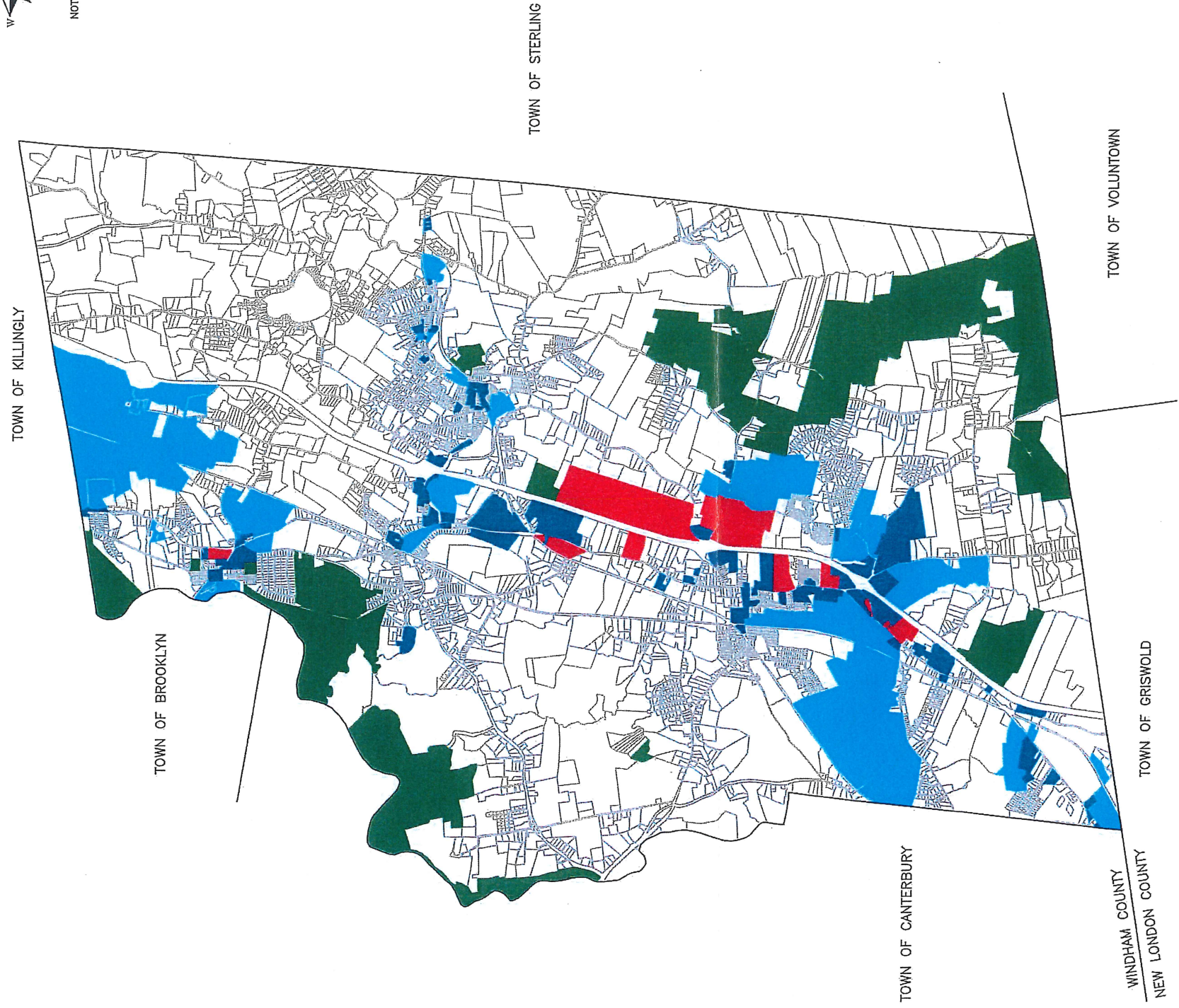
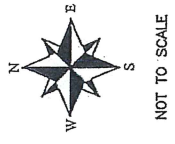


NOT TO SCALE






TOWN OF PLAINFIELD -- 2018

TOWN OF PLAINFIELD, CONNECTICUT
PLAN OF CONSERVATION AND DEVELOPMENT
POLICIES PLAN, 2018-2028



GROWTH AREAS

-  EXISTING COMMERCIAL
-  EXISTING INDUSTRIAL
-  FUTURE COMMERCIAL/INDUSTRIAL

PRESERVATION AREAS

-  NATURAL ENVIRONMENT

FUTURE LAND USE PLAN

FOR PLANNING PURPOSES ONLY!

TOWN OF PLAINFIELD, CONNECTICUT
 PLAN OF CONSERVATION AND DEVELOPMENT
 POLICIES PLAN, 2018-2028

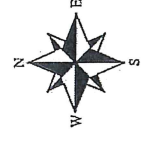


NOTE: Locations are general and for inventory and planning purposes only.

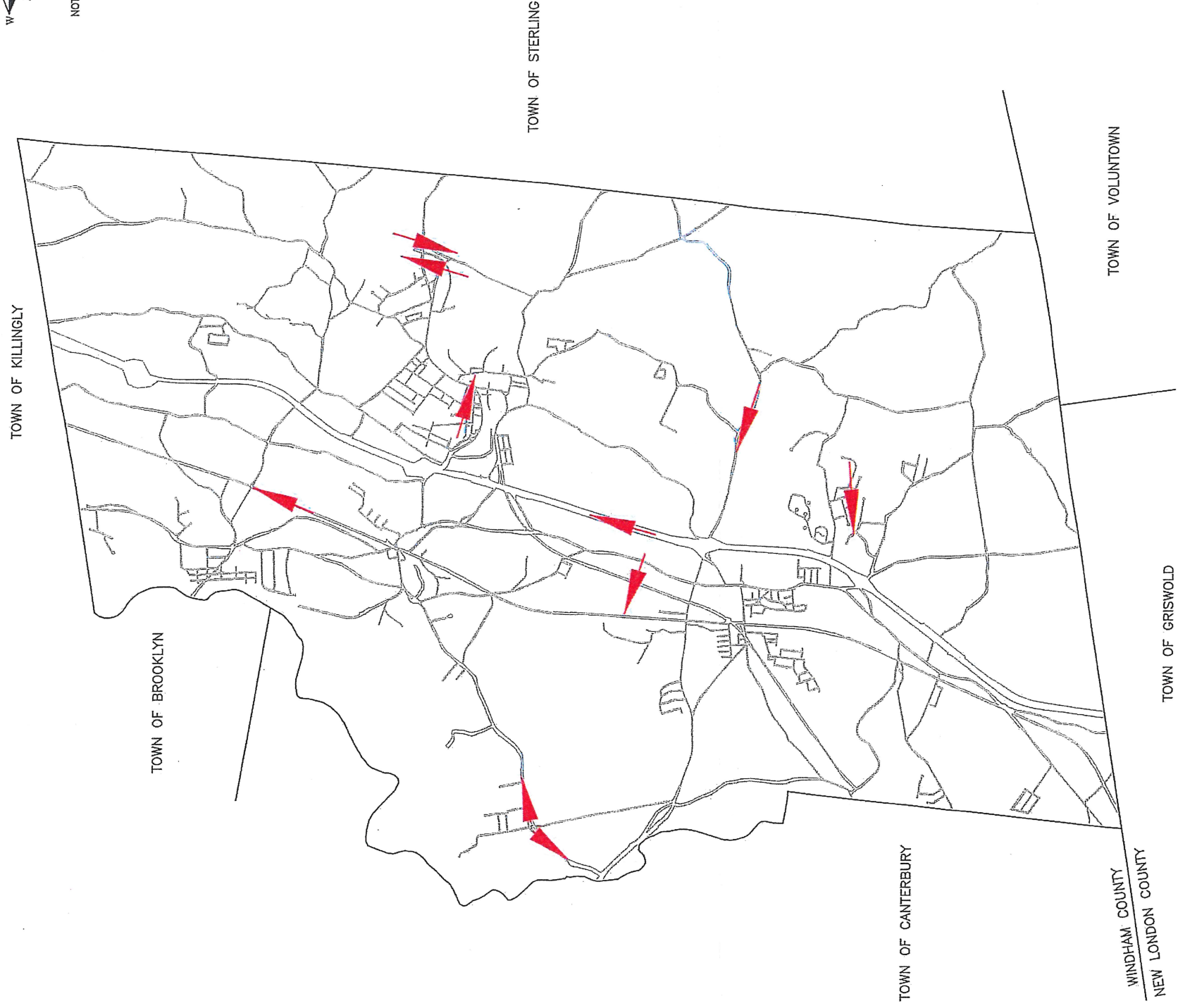
PLANNING and ENGINEERING DEPT. - 2018

CEMETERIES

TOWN OF PLAINFIELD, CONNECTICUT
PLAN OF CONSERVATION AND DEVELOPMENT
POLICIES PLAN, 2018-2028



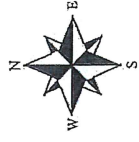
NOT TO SCALE



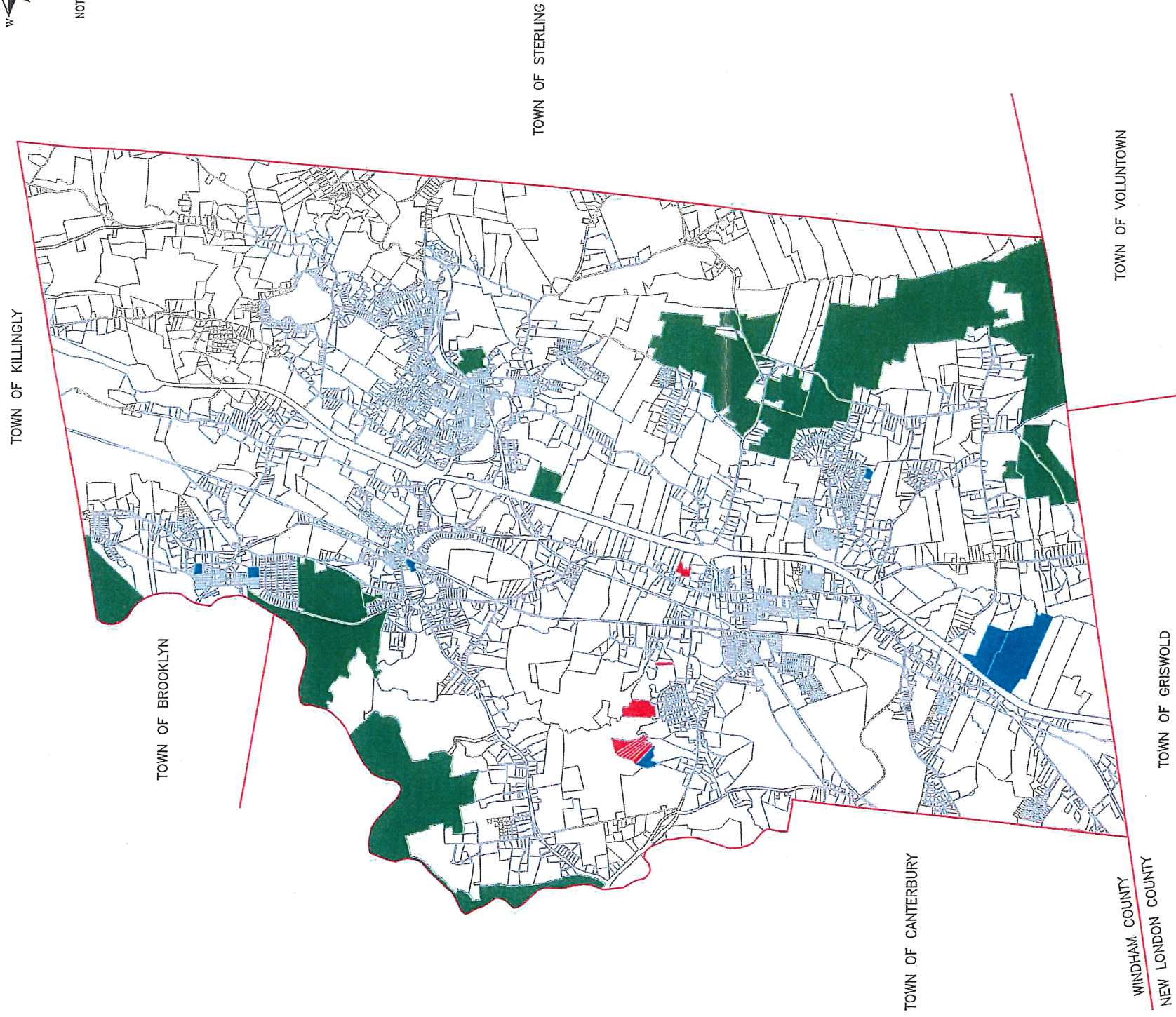
SCENIC VIEWS

SCENIC VIEWS AND VISTAS




TOWN OF PLAINFIELD, CONNECTICUT
PLAN OF CONSERVATION AND DEVELOPMENT
POLICIES PLAN, 2018-2028



NOT TO SCALE

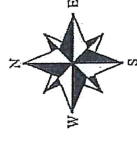


LEGEND

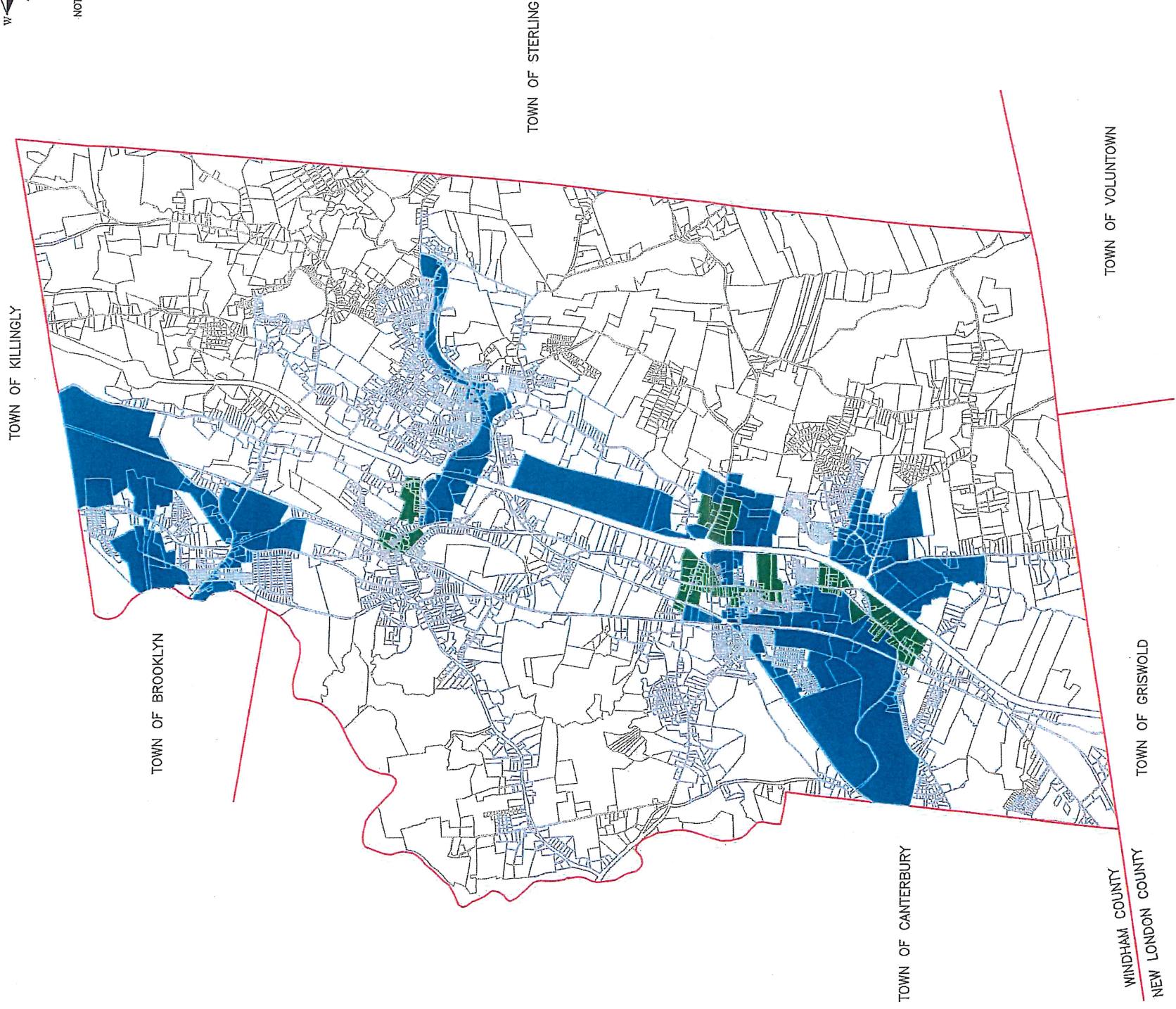
-  Town Open Space
-  State Open Space
-  Wyndham Land Trust

OPEN SPACE

TOWN OF PLAINFIELD, CONNECTICUT
PLAN OF CONSERVATION AND DEVELOPMENT
POLICIES PLAN, 2018-2028



NOT TO SCALE



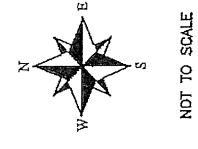
FOR PLANNING PURPOSES ONLY!

ENTERPRISE CORRIDORS

-  Existing Areas
-  Proposed Expansion

ENTERPRISE ZONES

TOWN OF PLAINFIELD, CONNECTICUT
 PLAN OF CONSERVATION AND DEVELOPMENT
 POLICIES PLAN, 2018-2028

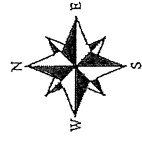


LEGEND

- Town/Community Buildings
- ▲ State Land & Facilities
- ◆ Parks & Recreation Areas
- Schools/Public Buildings

COMMUNITY FACILITIES

TOWN OF PLAINFIELD, CONNECTICUT
 PLAN OF CONSERVATION AND DEVELOPMENT
 POLICIES PLAN, 2018-2028



NOT TO SCALE



NOTE: This map is for general
 planning purposes only.

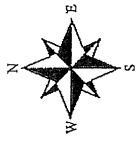
LEGEND

- District 1: Plainfield Fire District - Plainfield Fire Company #1
 Approximately 19 square miles.
- District 2: Central Village Fire District - Central Fire Company #1
 Approximately 7 square miles.
- District 3: Moosup Fire District - Moosup Fire District
 Approximately 11 square miles.
- District 4: Wauregan Fire District - Atwood Hose Fire Company
 Approximately 4 square miles.

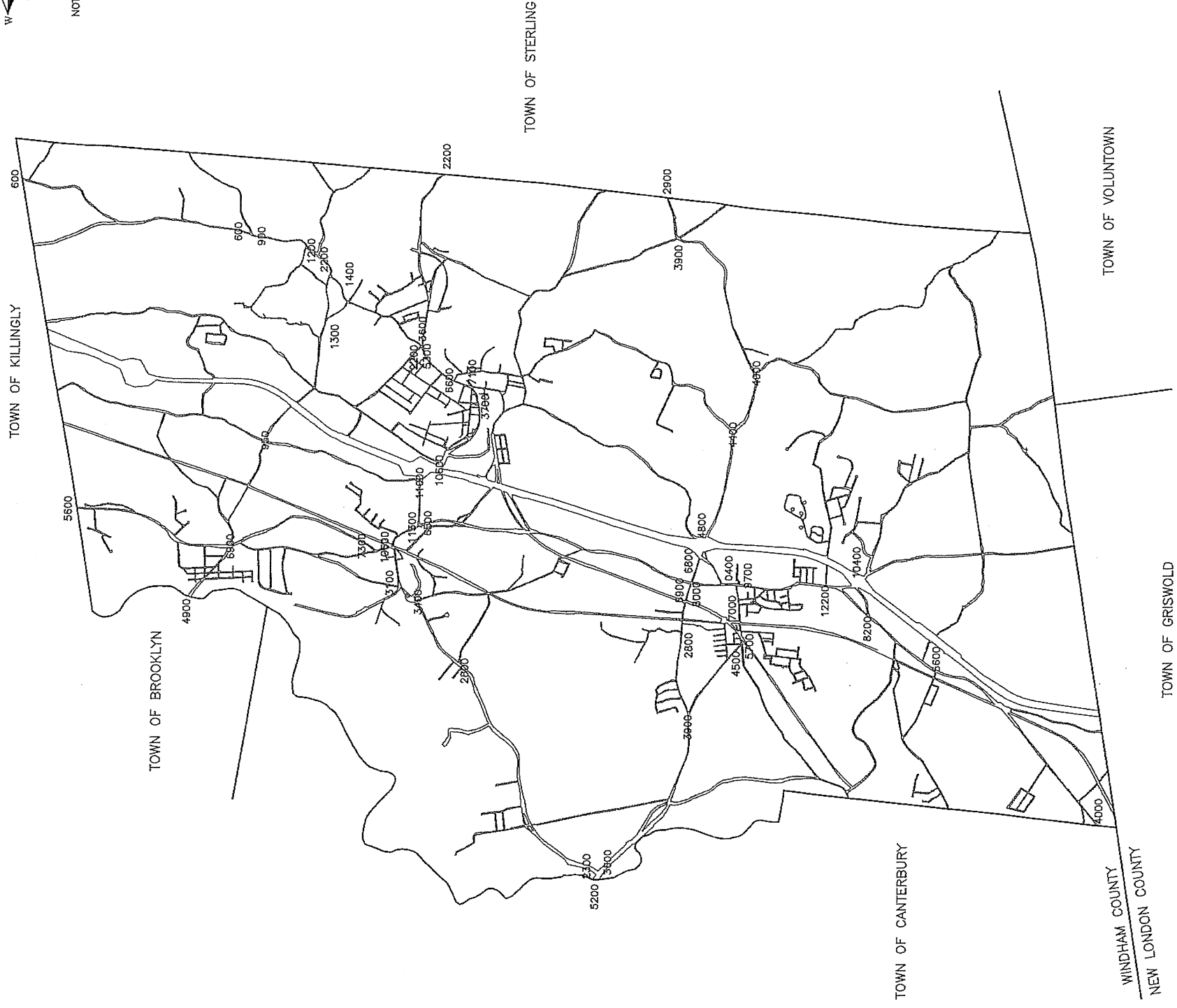
PLANNING and ENGINEERING DEPT. - 2018

FIRE DISTRICTS

TOWN OF PLAINFIELD, CONNECTICUT
 PLAN OF CONSERVATION AND DEVELOPMENT
 POLICIES PLAN, 2018-2028



NOT TO SCALE

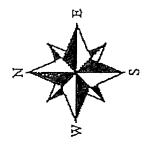


NOTES:
 For Planning Purposes Only
 2500 indicates Average Daily Traffic as obtained
 from ConnDOT 2013 ADT

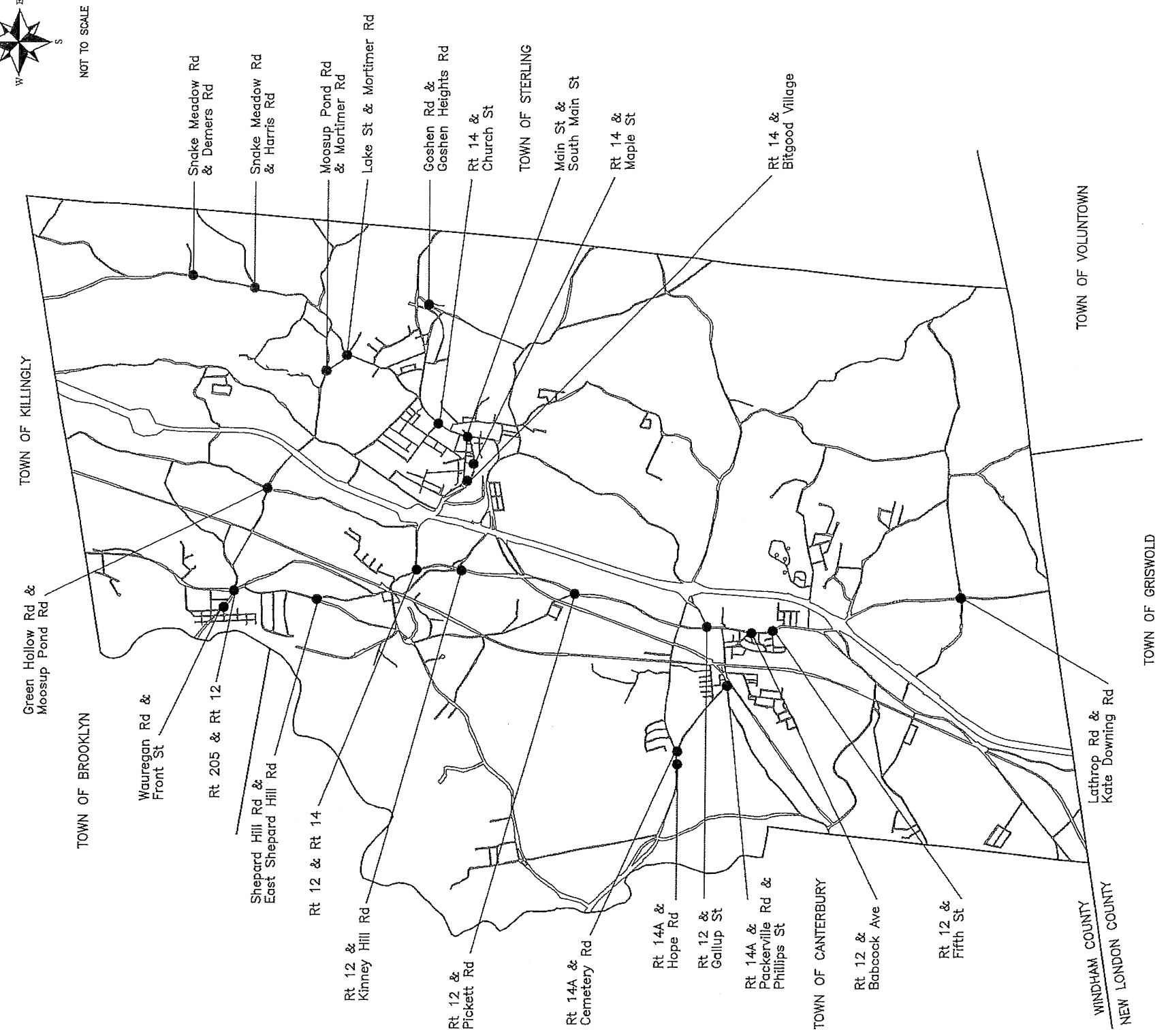
PLANNING and ENGINEERING DEPT. - 2018

TRAFFIC COUNTS

TOWN OF PLAINFIELD, CONNECTICUT
 PLAN OF CONSERVATION AND DEVELOPMENT
 POLICIES PLAN, 2018-2028

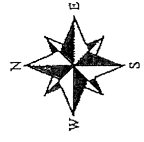


NOT TO SCALE



DANGEROUS INTERSECTIONS

TOWN OF PLAINFIELD, CONNECTICUT
PLAN OF CONSERVATION AND DEVELOPMENT
POLICIES PLAN, 2018-2028

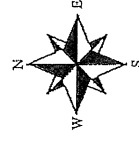


NOT TO SCALE

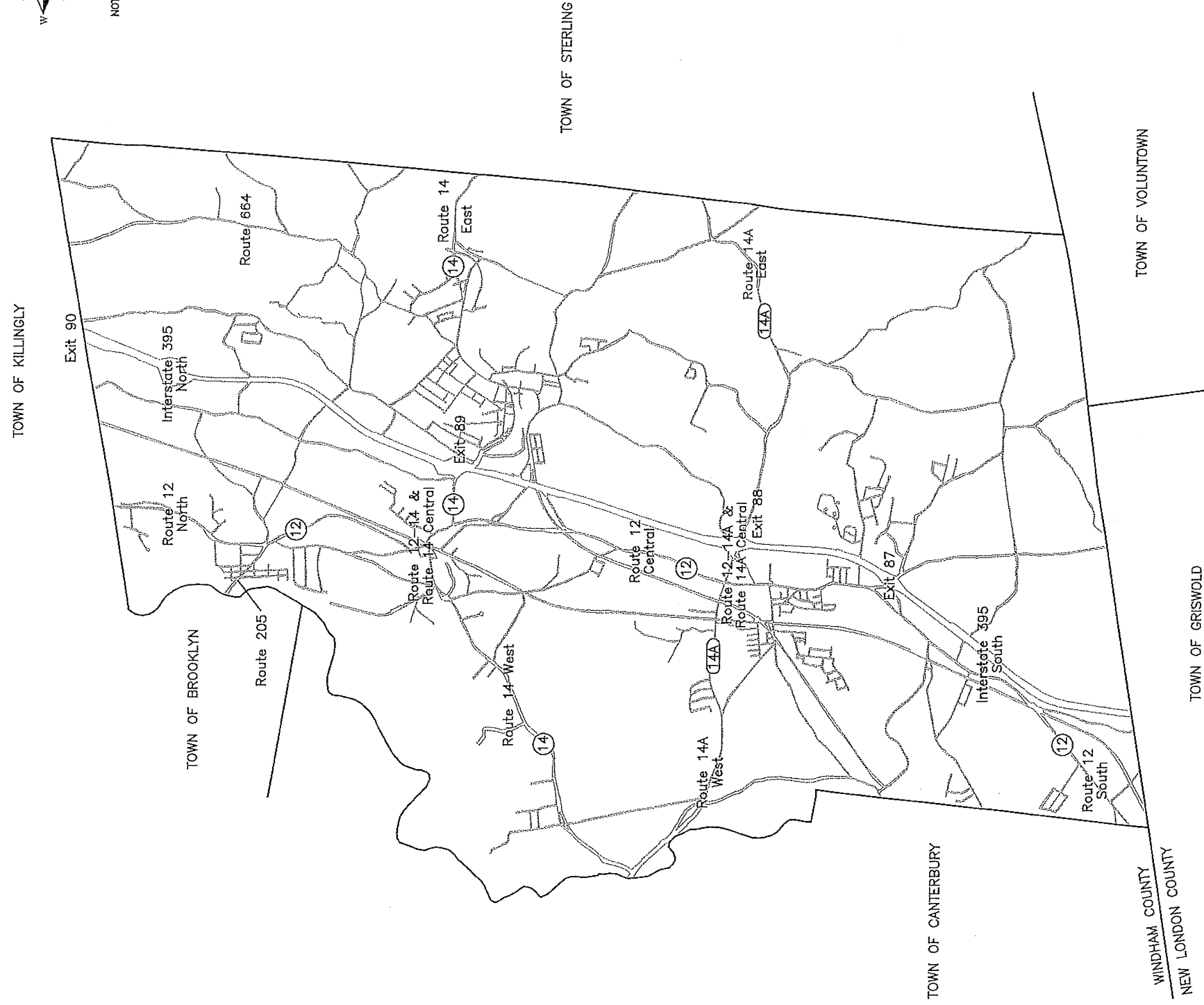


VILLAGE CENTERS

TOWN OF PLAINFIELD, CONNECTICUT
PLAN OF CONSERVATION AND DEVELOPMENT
POLICIES PLAN, 2018-2028



NOT TO SCALE



TRANSPORTATION CORRIDORS