

# WASTE MANAGEMENT PLAN

## KOINONIA ACADEMY ANNEX BUILDING Block 509 Lot 1.01 1040 Plainfield Avenue, Plainfield, N.J.

### 1.0 Project Description

- 10,700 sq ft Koinonia School Annex
- Total of 8 classrooms serving 200 children between grades 1-12 with 12 employees
- Hours of Operation: 8:00 AM to 6:00 PM

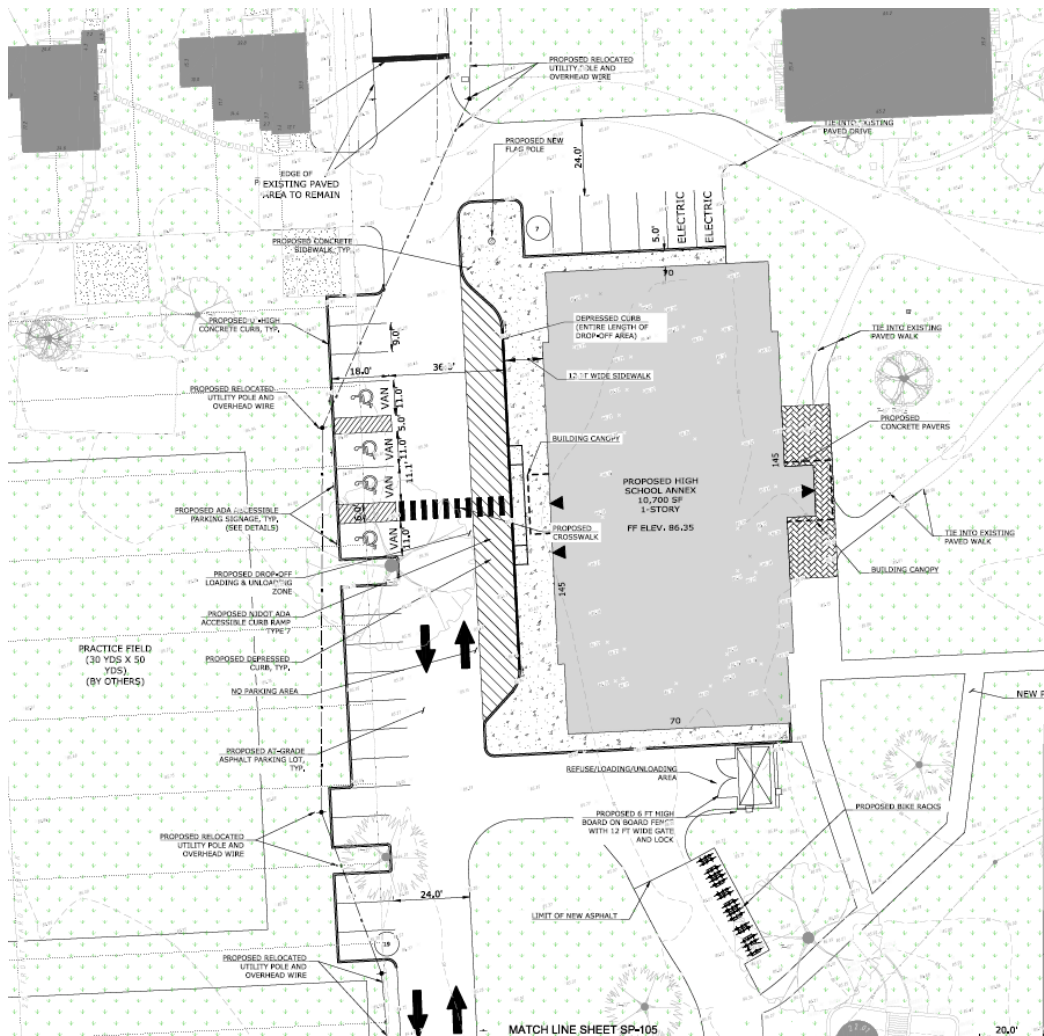


Figure 1- Site Plan

---

## WASTE MANAGEMENT PLAN

---

### KOINONIA ACADEMY ANNEX BUILDING Block 509 Lot 1.01 1040 Plainfield Avenue, Plainfield, N.J.

#### 2.0 Waste Management Areas

As indicated on the architectural floor plan, waste is collected daily from the school custodians and brought to the waste storage area, where the following waste containers are available:

Waste Containers – Two 4 cu yds (size)

Waste Recyclable – One 4 cu yds (size) + One 2.5 cu yd (cardboard) (size)

#### 3.0 Waste Hauler

The Plainfield Municipal Utility Authority (PMUA) will be contracted to collect waste from the project site.

PMUA utilizes 28 to 30 cubic yard rear loader waste trucks. The waste trucks have a clearance height of **12 ft 10** inches. The width of the waste truck is less than 8.5 ft wide. SEE FIGURE 2. The PMUA Rear Loader Truck utilizes a trunion bar of 78" wide.

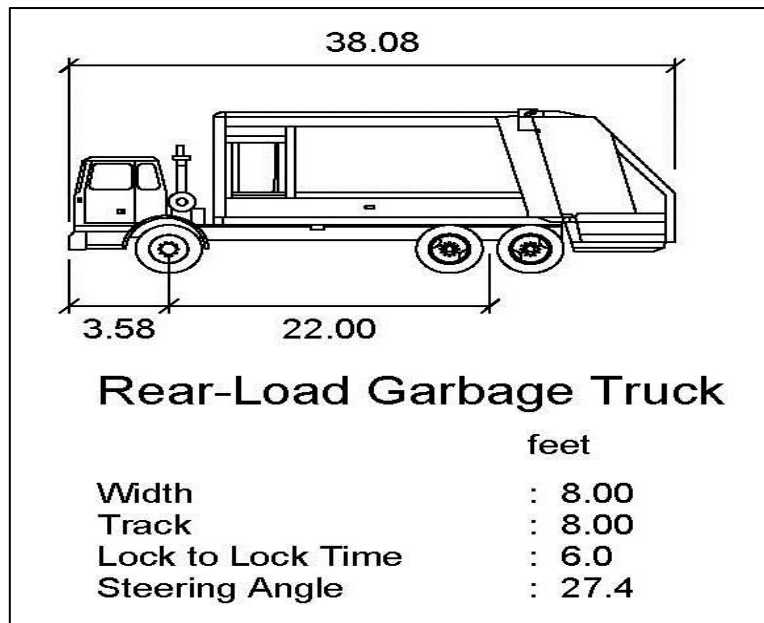


Figure 2 Typical Rear Loader Waste Truck with Dimensions

---

## WASTE MANAGEMENT PLAN

---

### KOINONIA ACADEMY ANNEX BUILDING Block 509 Lot 1.01 1040 Plainfield Avenue, Plainfield, N.J.

#### **4.0 Waste Collection**

##### **4.1 Waste Management**

The school will be served by two -4 cubic yard containers for waste, one 4 cu yd recycling container, and one 2.5- cu yd container for cardboard located on the east side of the exterior of the building.

The waste and recyclables will be collected from each classroom and common areas and brought to the outside storage area daily by custodial staff.

Waste will be picked up at the school twice a week.

The container must have a trunnion bar not greater than 78 inch, which is used to lift the container into the rear loader truck.

##### **4.2 Waste Recycling Plan**

Recycled products will consist of two components: cardboard and co-mingled recyclables (glass, plastic; paper; metal).

##### **4.3 Bulk Waste Collection**

Bulk waste generated by the school will be brought to the waste storage area. Waste will be picked up by a private hauler or the Plainfield PMUA as needed. Bulk waste will be stored within the waste storage area.

##### **4.4 Waste Storage Area Sizing and Location**

The 12 ft by 20 ft waste storage area is located on the east side of the school adjacent to the sidewalk next to the building. The waste storage area can accommodate three 4-cu yd containers, one 2.5-cu yd container and also has space for bulk waste storage.

---

## WASTE MANAGEMENT PLAN

---

### KOINONIA ACADEMY ANNEX BUILDING Block 509 Lot 1.01 1040 Plainfield Avenue, Plainfield, N.J.

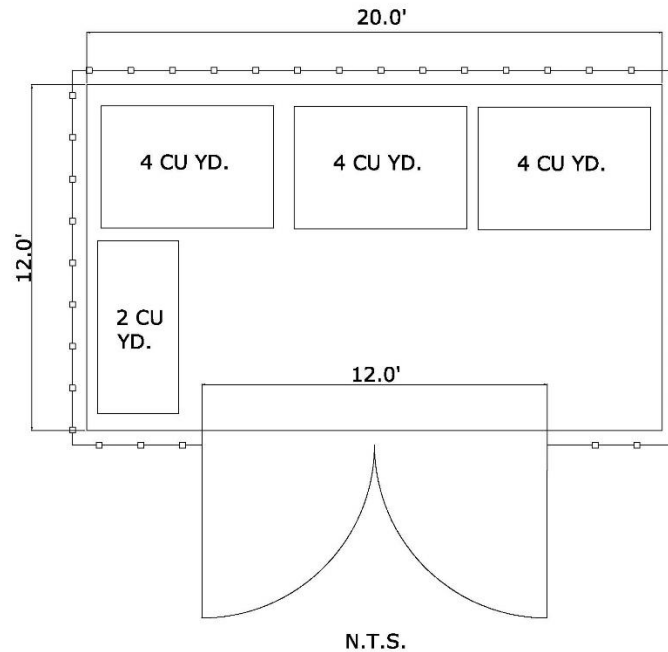


FIGURE 2 – Waste Storage Area

#### 4.5 Waste Truck Route

The waste collection trucks will access the site from Plainfield Avenue or Stillman Avenue. The waste trucks enter the site, back into the waste storage area, load the waste and exit onto Plainfield Avenue or Stillman Avenue.

Waste is picked up as required, but typically twice a week for the recyclable waste and once a month for the bulk waste.

WASTE MANAGEMENT PLAN

KOINONIA ACADEMY ANNEX BUILDING  
Block 509 Lot 1.01  
1040 Plainfield Avenue, Plainfield, N.J.



2.5 YARD  
Rear Load

H: 49"  
L: 50"  
W: 77"



4 YARD  
Rear Load

H: 48"  
L: 84"  
W: 77"

FIGURE 3 – Typical 4 cu yd and 2.5 cu yd container

# WASTE MANAGEMENT PLAN

## KOINONIA ACADEMY ANNEX BUILDING Block 509 Lot 1.01 1040 Plainfield Avenue, Plainfield, N.J.

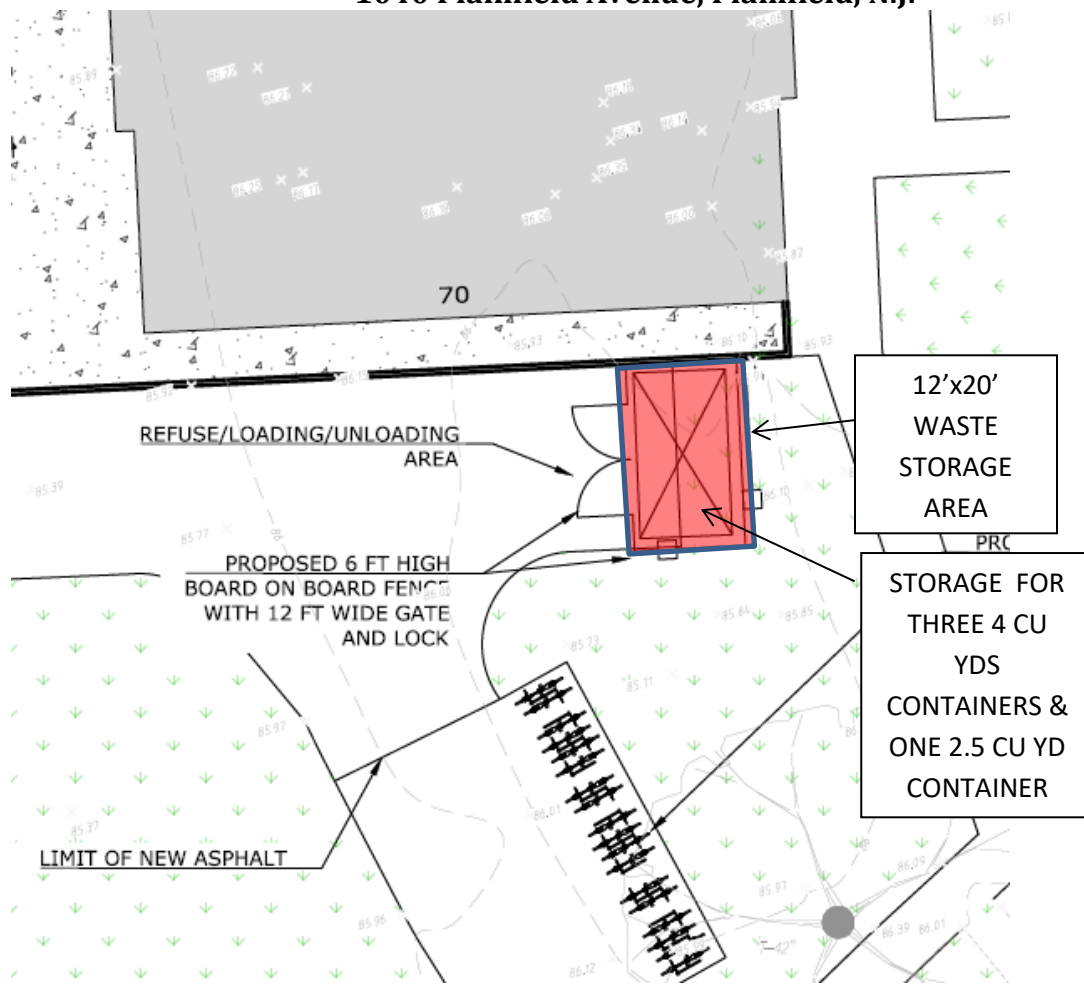


FIGURE 4 – Site Plan Waste Storage Area



# WASTE MANAGEMENT PLAN

## KOINONIA ACADEMY ANNEX BUILDING Block 509 Lot 1.01 1040 Plainfield Avenue, Plainfield, N.J.

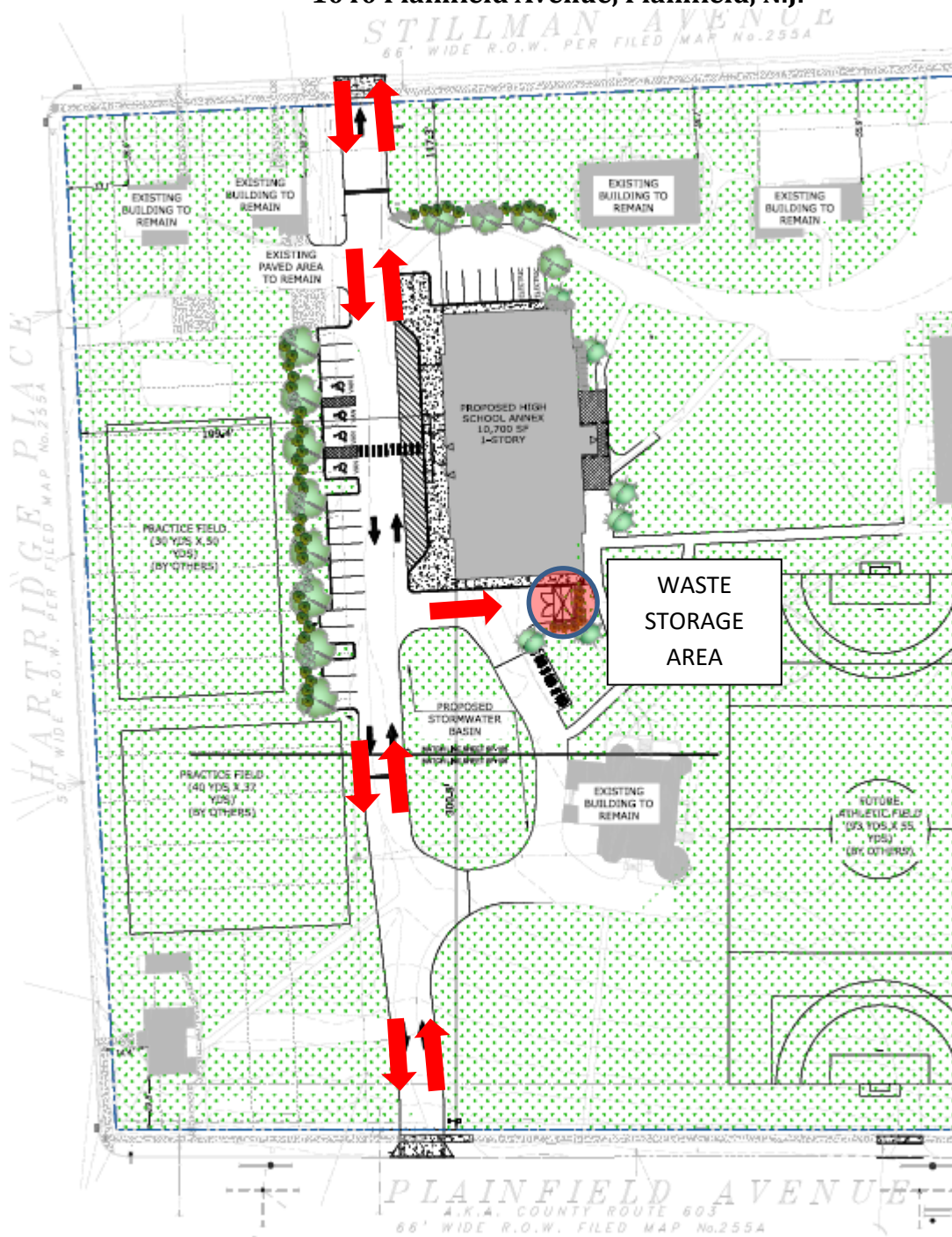


FIGURE 5 – Waste Truck Route

---

---

## WASTE MANAGEMENT PLAN

---

---

**KOINONIA ACADEMY ANNEX BUILDING  
Block 509 Lot 1.01  
1040 Plainfield Avenue, Plainfield, N.J.**

### 4.0 Waste Pick-up Schedule

Waste Pick-up Schedule			
Waste Source Area	Estimated Pick-up Trips per week (Note 2)	No. of Containers	Estimated Volumes/Week
School waste	2	2-4 cu yds	4 cu yds
Recyclables (Note 1)			
Cardboard	1	1-2.5 cu yds	1 cu yds
Comingled Recyclables (Glass/Plastic/Metal)	1	1-4 cu yds	1 cu yds
Bulk Waste	1 per month	N/A	N/A

*Note 1- Alternating weeks between each waste stream*

*Note 2- Actual numbers of pick-ups will depend on actual waste generated by the site.*

### 5.0 Waste Generated on the Site:

The proposed development will require two 4 cu.yd. containers for solid waste, one 4 cu. yd. container for recycled waste and one 2.5 cu yd container for cardboard, for a total of 4. The bulk storage will not require a waste container.

Each classroom and common area will have waste bins for regular waste and recyclable waste for glass, plastic, paper and metal which will be collected and brought out to the waste storage area within the parking lot by the custodial staff. Solid waste and recycled waste will be collect

ed twice a week or as needed.



---

## WASTE MANAGEMENT PLAN

---

**KOINONIA ACADEMY ANNEX BUILDING  
Block 509 Lot 1.01  
1040 Plainfield Avenue, Plainfield, N.J.**

### **Truck Deliveries:**

THE EXPECTED DELIVERIES AT THE PROPOSED DEVELOPMENT WILL BE PRIMARILY FOR MAIL DELIVERY, PERIODIC MAINTENANCE, AND WASTE PICK-UP.

Type of Truck	Weekly Truck Deliveries
Mail Truck	5
Waste Trucks	2
Recycle Pick-up Truck	1
Maintenance trucks/vans	2
Miscellaneous truck delivery	1
<b>Total # of Weekly Truck Deliveries</b>	<b>11</b>

### **Types of Trucks**

Mail Deliveries-	Van
Supply Deliveries-	Box Truck/Van
Waste Truck-	Typical 25 ton

\* No Trailers are planned for this site

**Delivery Schedule:** THE DELIVERIES WILL TAKE PLACE EITHER BEFORE OPENING HOURS (8:00 AM) OR AFTER HOURS (AFTER 6:00 PM) AND DURING DAYTIME NON-RUSH HOURS.

**Number of Deliveries:** THE EXPECTATION FOR THE AVERAGE NUMBER OF DELIVERIES FOR THE PROPOSED DEVELOPMENT WILL BE APPROXIMATELY **11 TRUCK DELIVERIES PER WEEK**, OR ON AVERAGE **ONE (1) TO TWO (2) TRUCKS PER DAY**. TRUCK DELIVERIES WILL ACCESS THE SITE VIA THE PROPOSED DRIVEWAY ON PLAINFIELD AVE OR STILLMAN AVE AND TRAVERSE THE SITE TO THE PROPOSED LOADING AND UNLOADING AREA ON THE EAST SIDE OF THE SCHOOL ANNEX BUILDING.