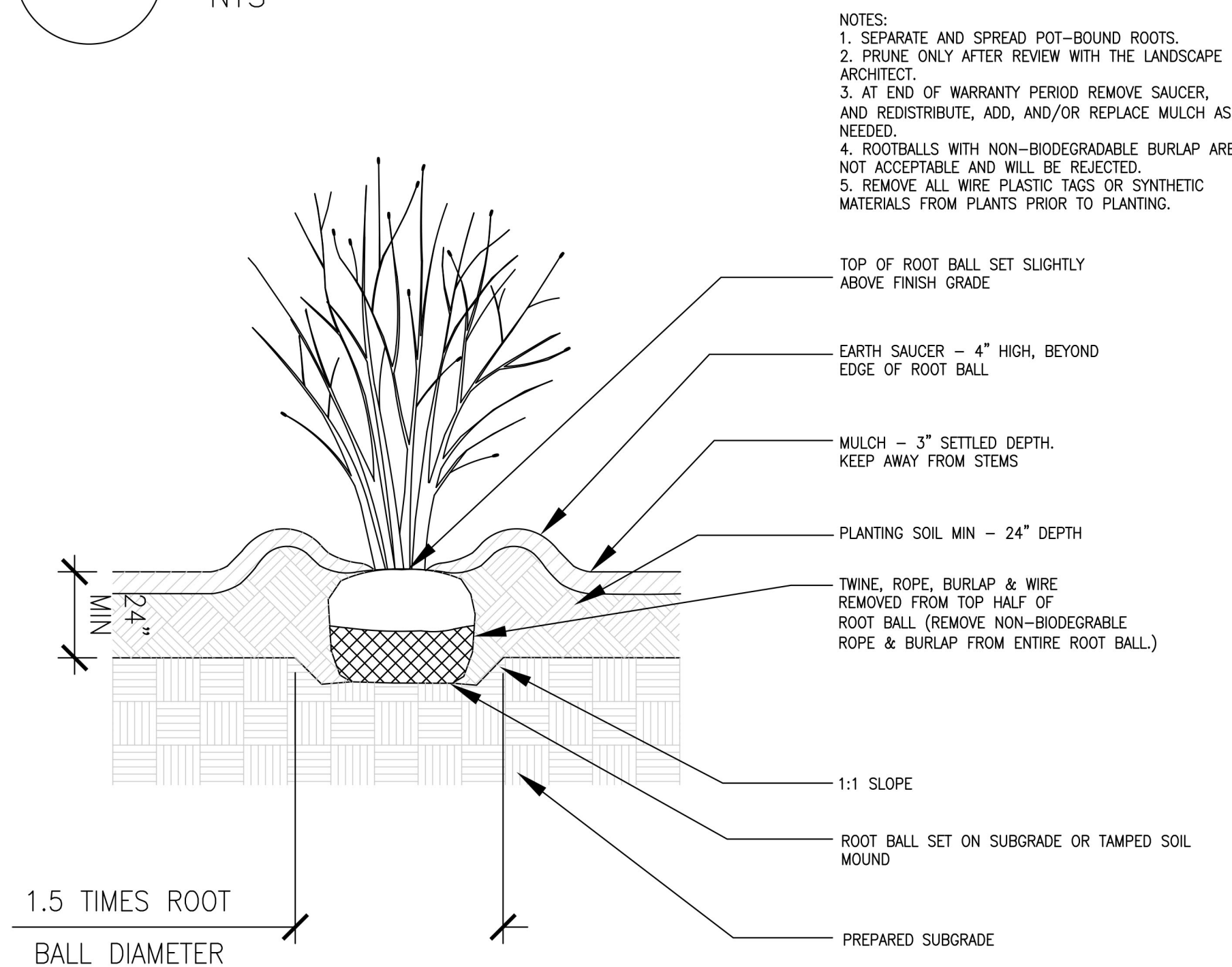
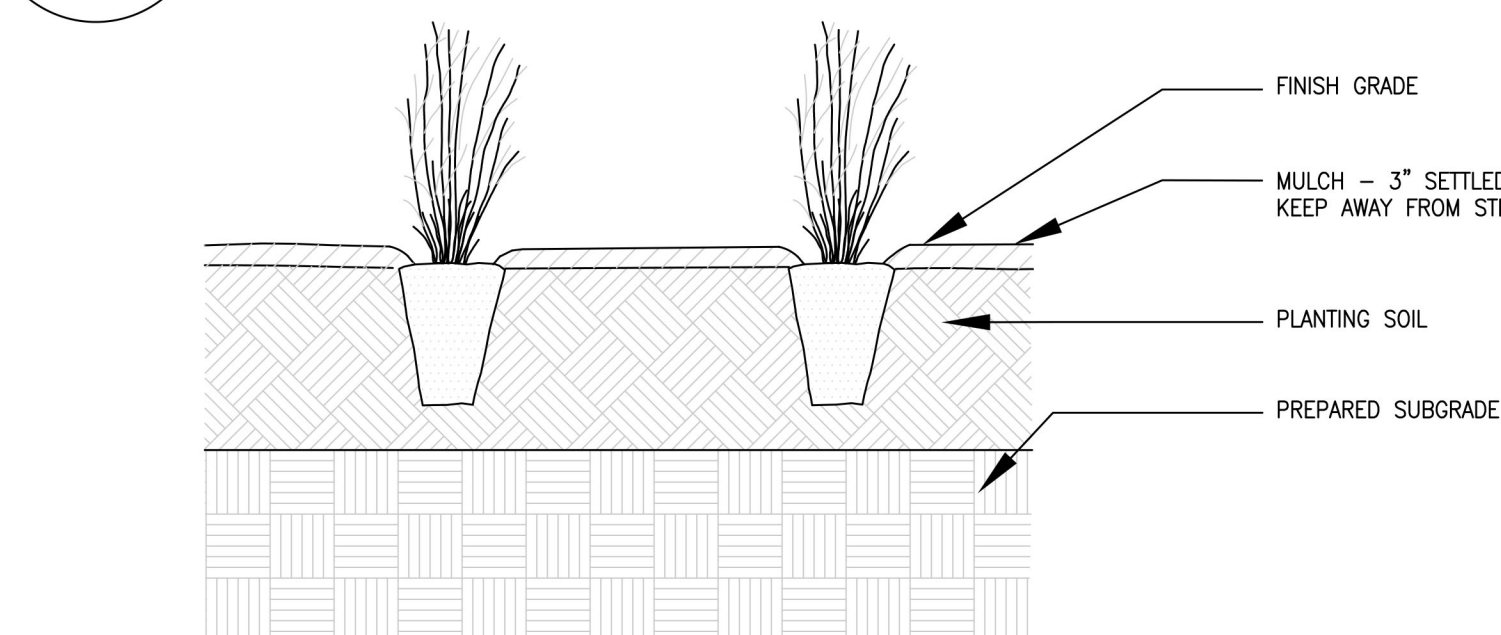


3 B&B TREE PLANTING DETAIL
NTS



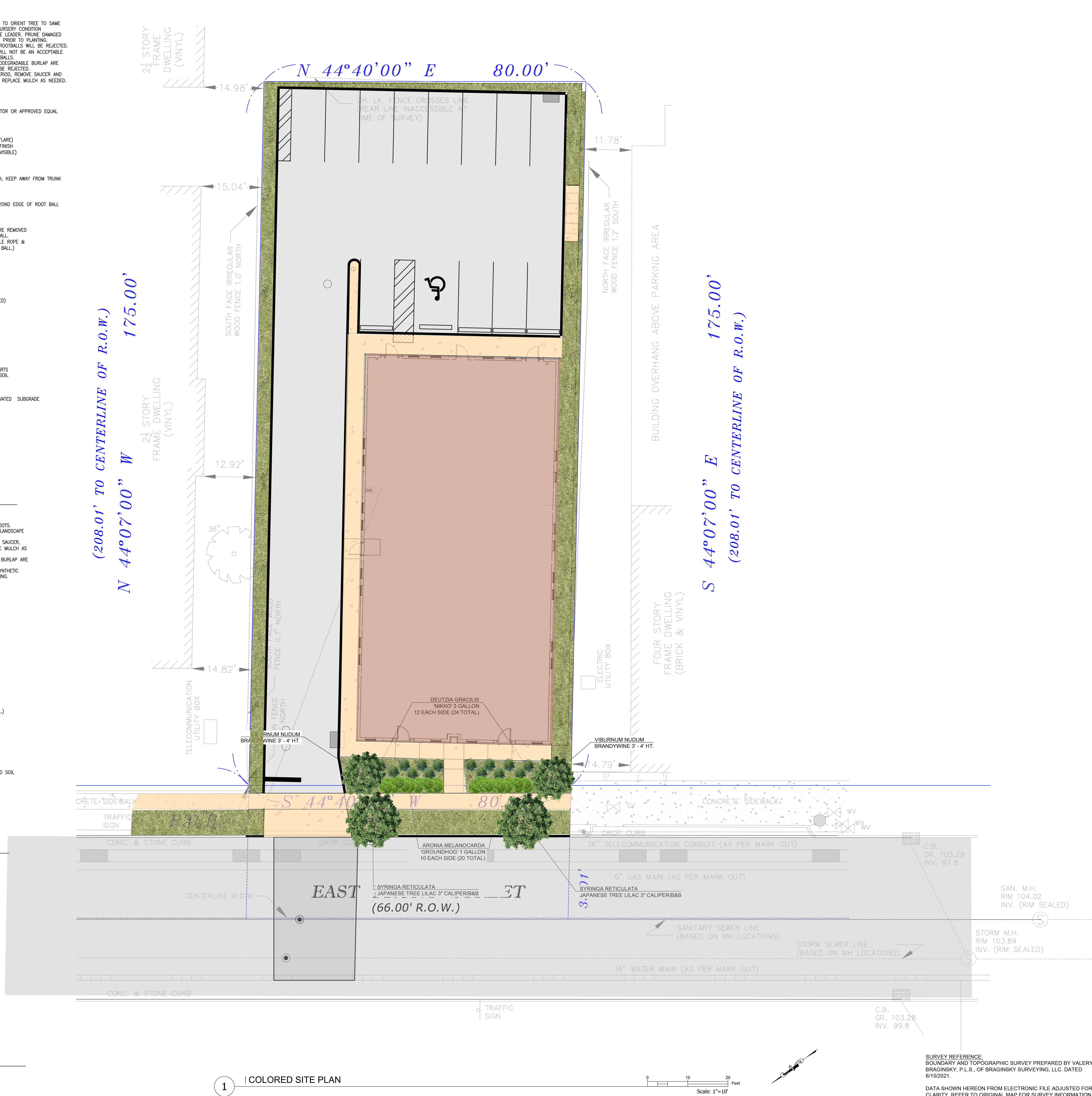
2 SHRUB PLANTING DETAIL
NTS



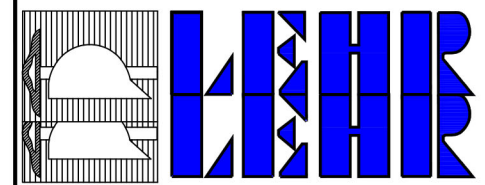
NOTES:

1. SEPARATE AND SPREAD POT-BOUND ROOTS. DIP ROOT BALLS INTO SOLUTION OF ROOT DIP BEFORE PLANTING.
2. REMOVE ALL WIRE PLASTIC TAGS OR SYNTHETIC MATERIALS FROM PLANTS PRIOR TO PLANTING.

6 L-101 HERBACEOUS PLANTING DETAIL
NTS



1 COLORED SITE PLAN



FRANK H. LEHR ASSOCIATES
CONSULTING CIVIL ENGINEERS
101 South Harrison Street
East Orange, New Jersey 07018
Tel: 973 673 2820
Fax: 973 673 6623
WWW.FHLEHR.COM

Certificate of Authorization No. 245427950400
©Copyright 2021 Frank H. Lehr Associates. All Rights Reserved.

Richard J. Adelsohn
Professional Engineer
NJ License No. GE035233

408-412 East Front Street
Block 324, Lot 14
City of Plainfield
Union County, New Jersey

COLORED SITE PLAN

NO.	DATE	REVISION/ISSUE

DESIGNED/DRAWN BY	LTB
CHECKED BY	RJA
DATE	OCTOBER 7, 2021
SCALE	AS NOTED

PROJECT NO.
9449

SHEET NO.
EX-1

SURVEY REFERENCE:
BOUNDARY AND TOPOGRAPHIC SURVEY PREPARED BY VALERY BRAGINSKY, P.L.S., OF BRAGINSKY SURVEYING, LLC. DATED 6/15/2021.
DATA SHOWN HEREON FROM ELECTRONIC FILE ADJUSTED FOR CLARITY, REFER TO ORIGINAL MAP FOR SURVEY INFORMATION.