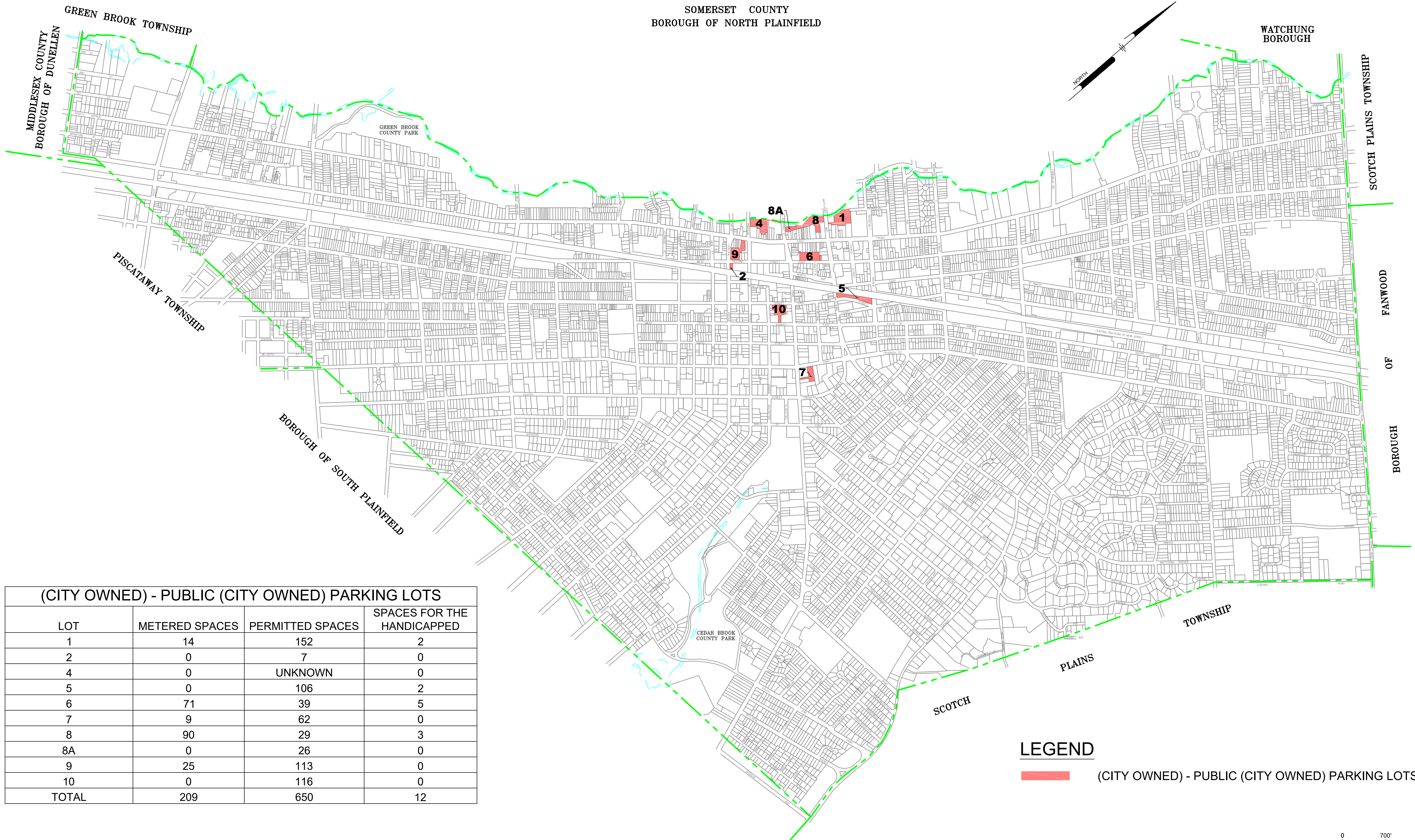
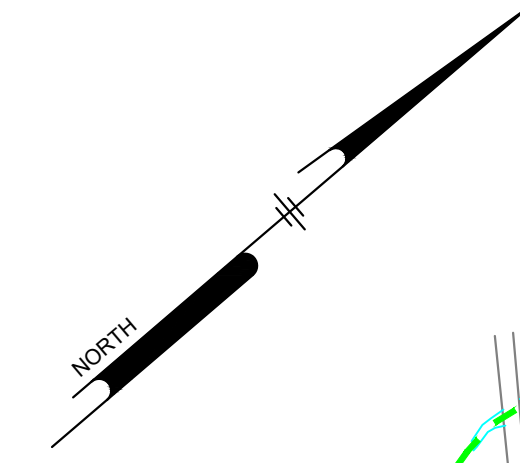


SOMERSET COUNTY
BOROUGH OF NORTH PLAINFIELD



(CITY OWNED) - PUBLIC (CITY OWNED) PARKING LOTS

LOT	METERED SPACES	PERMITTED SPACES	SPACES FOR THE HANDICAPPED
1	14	152	2
2	0	7	0
4	0	UNKNOWN	0
5	0	106	2
6	71	39	5
7	9	62	0
8	90	29	3
8A	0	26	0
9	25	113	0
10	0	116	0
TOTAL	209	650	12

LEGEND

(CITY OWNED) - PUBLIC (CITY OWNED) PARKING LOTS



PLOTTED: 6/26/2019 12:28 PM BY: Ven Luada DATA: PLOTSTYLE: Pennoni NCS.dwg PROJECT STATUS:

PROJECT	CPLFD19002
DATE	2019-06-26
DRAWING SCALE	1"=700'
DRAWN BY	KL
APPROVED BY	DD

ALL DOCUMENTS PREPARED BY PENNONI ASSOCIATES ARE INSTRUMENTS OF SERVICE IN RESPECT OF THE PROJECT. THEY ARE NOT INTENDED OR REPRESENTED TO BE SUITABLE FOR REUSE BY OWNER OR OTHERS ON THE EXTENSIONS OF THE PROJECT OR ON ANY OTHER PROJECT. ANY REUSE WITHOUT WRITTEN VERIFICATION OR ADAPTATION BY PENNONI ASSOCIATES FOR THE SPECIFIC PURPOSE INTENDED WILL BE AT OWNERS SOLE RISK AND WITHOUT LIABILITY OR LEGAL EXPOSURE TO PENNONI ASSOCIATES, AND OWNER SHALL INDEMNIFY AND HOLD HARMLESS PENNONI ASSOCIATES FROM ALL CLAIMS, DAMAGES, LOSSES AND EXPENSES ARISING OUT OF OR RESULTING THEREFROM.

PPL-1

DATE	NO.	REVISIONS	BY

(CITY OWNED) - PUBLIC (CITY OWNED) PARKING LOTS

CITY OF PLAINFIELD
 515 WATCHUNG AVENUE
 PLAINFIELD, NEW JERSEY 07060

ALL DIMENSIONS MUST BE VERIFIED BY CONTRACTOR AND OWNER MUST BE NOTIFIED OF ANY DISCREPANCIES BEFORE PROCEEDING WITH WORK



PENNONI ASSOCIATES INC.
 24 Commerce Street, Suite 300
 Newark, NJ 07102
 T 973.265.9775 F 973.265.9774
 NJ COA NO. GA28033300