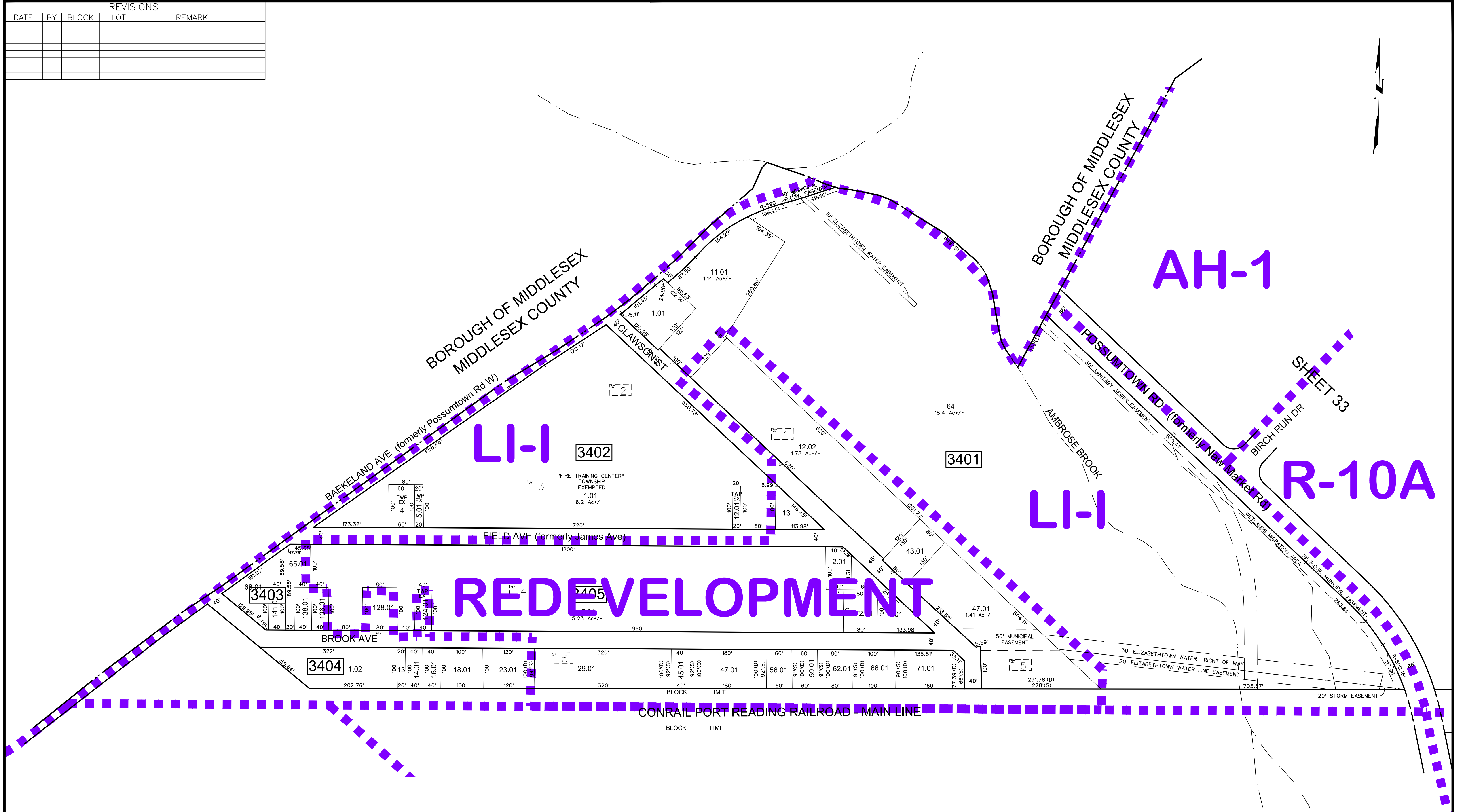


REVISIONS				
DATE	BY	BLOCK	LOT	REMARK



SHEET 37

SHEET 38

* THIS SHEET HAS BEEN DRAWN USING COMPUTER AIDED DRAFTING DESIGN (CAD/D) AND COORDINATE GEOMETRY (COGO).

ZONING MAP
TOWNSHIP OF PISCATAWAY
 MIDDLESEX COUNTY NEW JERSEY
 SCALE: 1" = 100' GRAPHIC SCALE DATE: MARCH, 2010
 0 50 100 200 400
 ENGINEERING DIVISION, DEPT. of COMMUNITY DEV.

LEGEND

DEVELOPMENT MAP # [] OLDER BLOCK # []

DEVELOPMENT LIST

37 HAIGHT & TODD, NO 8 (CAMEO REALTY CORP)