

# WE'RE ON A ROLL

## MEET YOUR NEW TRASH AND RECYCLING CARTS



TO FIND YOUR DAY,  
visit [oriontownship.org/singlehauler](http://oriontownship.org/singlehauler)  
or call **248-391-0304 ext. 1006**

### WHEN CAN I PUT OUT MY TRASH, RECYCLING, AND YARD WASTE?

Collection hours are 7:00 a.m. – 7:00 p.m. Per the Township Ordinance, the earliest you may set out recycling and garbage carts is 6:00 p.m. the night before your scheduled collection day. All carts must be removed from the curb/collection area no later than 8:00 p.m. on the day of collection.

### WHAT IF MY HOUSE WAS MISSED ON COLLECTION DAY?

Contact GFL if your house was missed on collection day. GFL will return and collect the missed materials before the end of the day for complaints received before 2:00 p.m. For complaints received after 2:00 p.m., GFL will return before the end of the following collection day.

## RATES

<i>Single-Family Homes</i>	<b>Quarterly Cost</b>	<b>Annual Cost</b>	<b>Quarterly Cost</b> (w/ 5% Discount)	<b>Annual Cost</b> (w/ 5% Discount)
<i>Year 1 – 2020</i>	\$52.06	\$208.24	\$49.46	\$197.83
<i>Year 2 – 2021</i>	\$53.68	\$214.72	\$51.00	\$203.98
<i>Year 3 – 2022</i>	\$55.31	\$221.24	\$52.54	\$210.18
<i>Year 4 – 2023</i>	\$57.05	\$228.20	\$54.20	\$216.79
<i>Year 5 – 2024</i>	\$58.79	\$235.16	\$55.85	\$223.40

<i>Apartment and Condos</i> <i>(with cart service and</i> <i>no yard waste service)</i>	<b>Quarterly Cost</b>	<b>Annual Cost</b>	<b>Quarterly Cost</b> (w/ 5% Discount)	<b>Annual Cost</b> (w/ 5% Discount)
<i>Year 1 – 2020</i>	\$43.33	\$173.32	\$41.16	\$164.65
<i>Year 2 – 2021</i>	\$44.95	\$179.80	\$42.70	\$170.81
<i>Year 3 – 2022</i>	\$46.58	\$186.32	\$44.25	\$177.00
<i>Year 4 – 2023</i>	\$47.94	\$191.76	\$45.54	\$182.17
<i>Year 5 – 2024</i>	\$49.87	\$199.48	\$47.38	\$189.51

<i>Mobile Homes</i>	<b>Quarterly Cost</b>	<b>Annual Cost</b>	<b>Quarterly Cost</b> (w/ 5% Discount)	<b>Annual Cost</b> (w/ 5% Discount)
<i>Year 1 – 2020</i>	\$46.24	\$184.96	\$43.93	\$175.71
<i>Year 2 – 2021</i>	\$47.86	\$191.44	\$45.47	\$181.87
<i>Year 3 – 2022</i>	\$49.49	\$197.96	\$47.02	\$188.06
<i>Year 4 – 2023</i>	\$51.13	\$204.52	\$48.57	\$194.29
<i>Year 5 – 2024</i>	\$52.78	\$211.12	\$50.14	\$200.56

## CARTS FAQ

### RECYCLING AND GARBAGE CARTS WERE DELIVERED TO MY HOME, BUT I DON'T WANT THEM. WILL YOU TAKE THEM BACK?

No. Residents must use the provided Orion Township carts for recycling and garbage beginning in January 2020. Uniform cart deployment allows GFL to use their automated and semi-automated trucks, which increases collection efficiencies, worker safety, and helps keep our streets free from litter and debris.

### WHAT SHOULD I DO WITH MY OLD CARTS/GARBAGE CANS?

Your current provider will pick up your old carts within 30 days from your last day of service. If you purchased your own carts/cans and wish to dispose of them, you may leave them at the curb on your regular collection day with a note saying they should be collected as recycling (or trash). Old cans may also be used for other household purposes, or you may use them for yard waste by clearly labeling them as yard waste (free compost stickers are available at Township Hall, the Orion Center, or directly from GFL). However, you may not use your existing carts/cans for garbage or recycling.

### DO I HAVE TO PUT MY RECYCLABLES AND GARBAGE IN MY CARTS?

Yes. Recycling should be placed loose in the recycle cart; **no plastic bags**. Garbage should be placed first in garbage bags and then placed in the garbage cart. If you need additional carts, you may request them from GFL for a one-time fee; your quarterly rate will remain the same regardless of how many carts you set out on collection day. Exceptions to this will be made on the days immediately following holidays, at which time residents may place additional bags directly at the curb/outside of a cart.

### HOW MUCH ARE ADDITIONAL CARTS?

An additional 95-gallon recycling, garbage, or yard waste cart is \$85. An additional 64-gallon recycling or trash cart is \$75.

### WHERE DO I STORE MY CARTS?

Please store your carts behind or beside your home, on or under a back porch, or inside your garage. Do not store them on the sidewalk in front of your home or at the curb. If applicable, make sure you follow your homeowner or condo association's rules for cart storage.

### WHAT IF A CART IS STOLEN OR DAMAGED?

Each cart will be assigned to an address and can be tracked using an RFID tag. If your cart is lost or stolen, please contact GFL who will try to locate your cart. Within 24-hours of notification (excluding Saturday and Sunday), GFL will provide replacement carts to replace those damaged, destroyed, lost, or stolen. If your cart is damaged, GFL will first try to repair the cart before replacing it. There is no fee for replacing a stolen or damaged cart (except if the damage/loss was due to homeowner neglect).

### DO I TAKE MY CARTS WITH ME WHEN I MOVE?

No. The carts will remain with the property when you move, to be used by the new homeowner. Please remember to contact the Township to schedule your final service.

### CAN I CHANGE MY CART SIZE?

Yes. Residents are to use their provided carts for the month of January. Beginning in February, until the end of March, if you find your cart size is not working for you, you may exchange it for a different size at no cost. After March, there will be a \$100 fee charged to exchange cart sizes. Size options are 64-gallons and 95-gallons.

TO LEARN MORE,  
visit [oriontownship.org/recycling](http://oriontownship.org/recycling)  
or call **248-391-0304 ext. 1006**

Funded in part by



Recyclebank®





# RECYCLE THANK YOU FOR RECYCLING THESE:



**Glass**



**Bottles and Jars**



**Paper**



**Office & Mixed Paper,  
Newspaper, Magazines  
& Flattened Cardboard**  
(pizza boxes clean of  
food acceptable)



**Plastic**



**Plastic Bottles and  
containers**  
(#1, #2, #4-7)



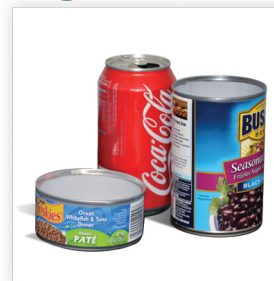
**Cartons**



**Cartons**  
(caps on)



**Cans**



**Aluminum and Steel  
Cans**

## NO!



No Plastic Bags  
or Plastic Wrap



No Food or Liquid  
(empty all  
containers)



No Tangles  
(no hoses, wires, chains,  
electronics, or hangers)



No Foam /  
Styrofoam™



No Hazardous Waste  
(no batteries, cell  
phones, electronics  
or needles)

## CART PLACEMENT

Wheels toward curb

Adequate spacing

No overhead obstructions

4ft

3 ft

3 ft



TO LEARN MORE & FIND YOUR  
COLLECTION SCHEDULE VISIT  
[oriontownship.org/recycling](http://oriontownship.org/recycling)  
OR CALL **248-391-0304**



Funded in part by



Turn 

Into 



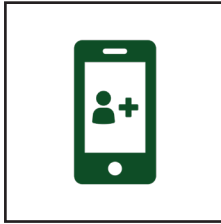
Recyclebank®



# Join Your Neighbors and Get Rewarded for Recycling in Orion Township!

We want all families in Orion Township to get rewarded for helping us make our community a greener, cleaner place. That's why we're proud to bring you Recyclebank, a program that rewards you for recycling at home and learning online.

By helping us cut down on waste, you'll be able to earn exclusive deals from local businesses! Here's how it works:



## Step 1

Sign up through our website or mobile app



## Step 2

Recycle at home and learn online



## Step 3

Browse our updated list of local rewards

**Sign up today at [Recyclebank.com](https://www.Recyclebank.com)**

Or call (888) 727-2978



Recyclebank®