

# Eagle Valley Recycling and Disposal Facility

**WM's Eagle Valley Recycling and Disposal Facility has been providing service for the disposal needs of residential, municipal and commercial customers in Oakland County and southeast Michigan since 1985.**

**The landfill is a Type II solid waste disposal facility and recycling drop-off center that also creates renewable energy. Eagle Valley is owned and operated by WM, the leading provider of comprehensive waste and recycling services in North America.**

## Containment Design

The entire site has been constructed with an engineered liner and leachate collection system. The double composite liner system at Eagle Valley is a liner and leachate collection system comprised of re-compacted clay liner or geo-synthetic liner, followed by a 60-mil high density polyethylene (HDPE) liner overlain by a geosynthetic secondary leachate collection system. Above this, the same system is repeated again to complete the double composite liner.

## Leachate Collection and Treatment

Leachate is a liquid, primarily precipitation, that passes through the waste. The leachate collects in a combination of granular soil layers, geosynthetic drainage layers and a network of pipes that direct the liquid to sumps for removal. The sumps are fitted with pumps with automatic controls that pump the liquid from the landfill. The leachate is then pumped to the sanitary sewer system for treatment at the Great Lakes Water Authority.

## Groundwater Monitoring

In accordance with MDEQ regulations, the facility monitors surface water, groundwater and air emissions. There are 20 groundwater monitoring wells around the site that monitor the groundwater that flows below the landfill.

## Landfill Gas Management

The gas collection system is expanded regularly and is currently comprised of approximately 100 extraction wells that are monitored monthly. Reports are submitted to the MDEQ on a semiannual basis.

## Security

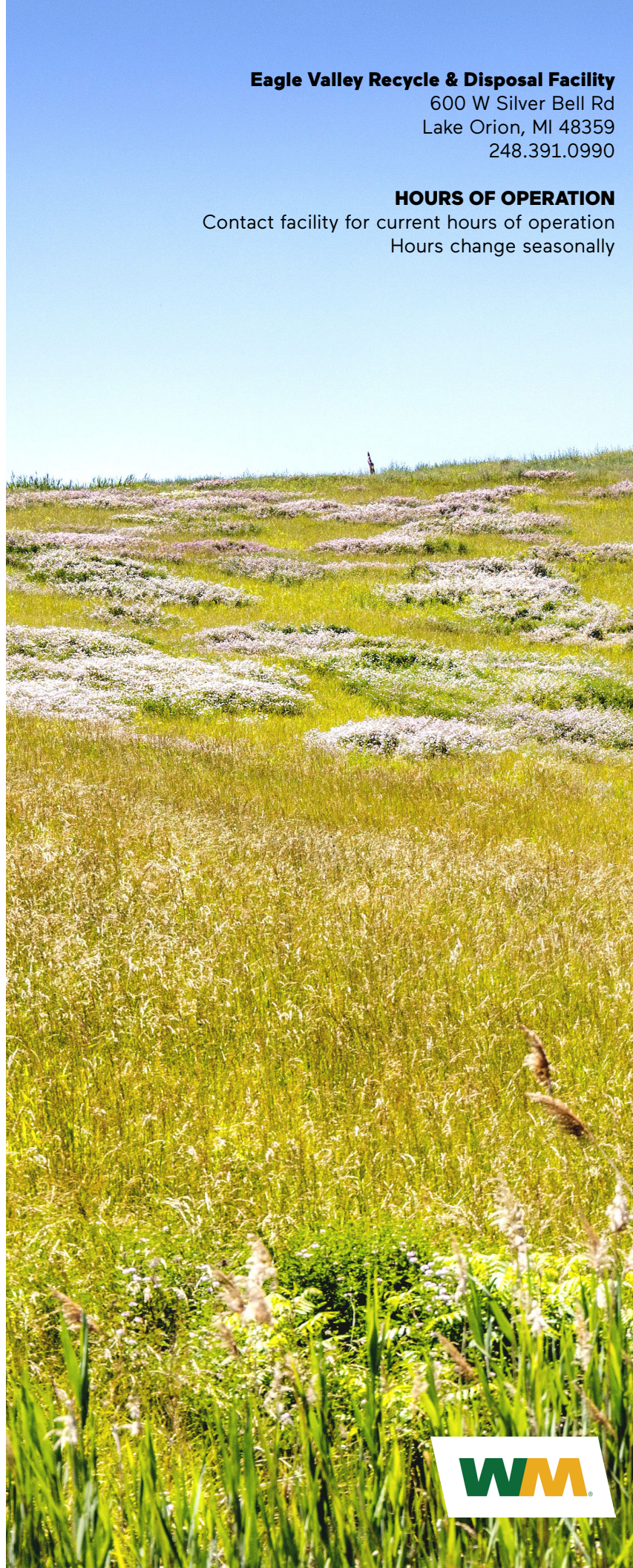
Site security is ensured by controlled, limited access to the facility through the gatehouse as well as perimeter fencing and natural barriers. During non-business hours this facility is monitored by 24-hour electronic surveillance.

## Eagle Valley Recycle & Disposal Facility

600 W Silver Bell Rd  
Lake Orion, MI 48359  
248.391.0990

## HOURS OF OPERATION

Contact facility for current hours of operation  
Hours change seasonally







### **YEAR OPENED**

1985

### **PROJECTED LIFE REMAINING**

25+ years

### **FACILITY ACREAGE**

277.5 acres

### **PERMITTED FOOTPRINT**

147.8 acres

### **REMAINING PERMITTED CAPACITY**

7.5 million cubic yards

### **APPROXIMATE TONS PROCESSED DAILY**

Approximately 500 to 3000 tons

### **OWNERSHIP**

Waste Management of Michigan, Inc.

### **PERMIT TYPE & PERMIT #**

Solid waste disposal operating license: 9123

### **REGULATORY AGENCIES**

Eagle Valley is licensed by the Michigan Department of Environment Great Lakes and Energy (EGLE) and is included in the Oakland County Solid Waste Management Plan.

### **EMPLOYEES**

12

### **ACCEPTABLE MATERIAL**

- Asbestos - Non Friable
- Auto Shredder Fluff
- Construction & Demolition (C&D) Debris
- Crushed Empty Drums
- Industrial & Special Wastes
- Municipal Solid Wastes (MSW)
- NORM (Naturally Occurring Radioactive Material)
- Tires

### **UNACCEPTABLE MATERIAL**

- Hazardous Waste
- Lead Acid Batteries
- Liquid Waste
- Low Level Radioactive Waste
- PCBs
- Tires - Whole
- Used Beverage Containers
- Yard Waste

### **RISK MITIGATION**

WM provides the highest level of services, backed with state-of-the-art site design and management systems, to help minimize risks and reduce liabilities.

### **COMMUNITIES SERVED**

WM believes in making a strong commitment to the local community. Each year, Eagle Valley participates in several programs and organizations that encourage a vital community.