

Okanogan County Shoreline Master Program Periodic Review

Okanogan County



Okanogan County is located in North Central Washington, bordered on the north by British Columbia, Canada, the Columbia River to the south, the Cascade Mountains to the west, and Ferry County to the east.

The County covers 5,281 square miles, making it the third largest county in the continental United States and the largest county in Washington.

Only 30% of the land within the county is in private ownership due to the amount of state and federal land.

The Colville Indian Reservation, located in the southeast corner of the county, occupies approximately 700,000 acres of Okanogan County and is an integral part of the heritage of the county.

Topics

- ▶ Introductions
- ▶ Goals
- ▶ Shoreline Management Act (SMA)
- ▶ Shoreline Master Program (SMP)
- ▶ Updating the SMP
- ▶ Scoping
- ▶ Public Participation
 - ▶ Survey
 - ▶ Public Hearing
- ▶ Schedule
- ▶ Discussion



Photo by Michelle Miller

Introductions

- ▶ Kurt Danison, Planner, Highlands Associates



Photo by Michelle Miller

Presentation goals

- ▶ Provide overviews of:
 - ▶ Shoreline Management Act
 - ▶ Periodic review process
- ▶ Discuss why public participation is necessary and important
- ▶ Answer your questions



Photo by Michelle Miller

Shoreline Management Act (SMA)

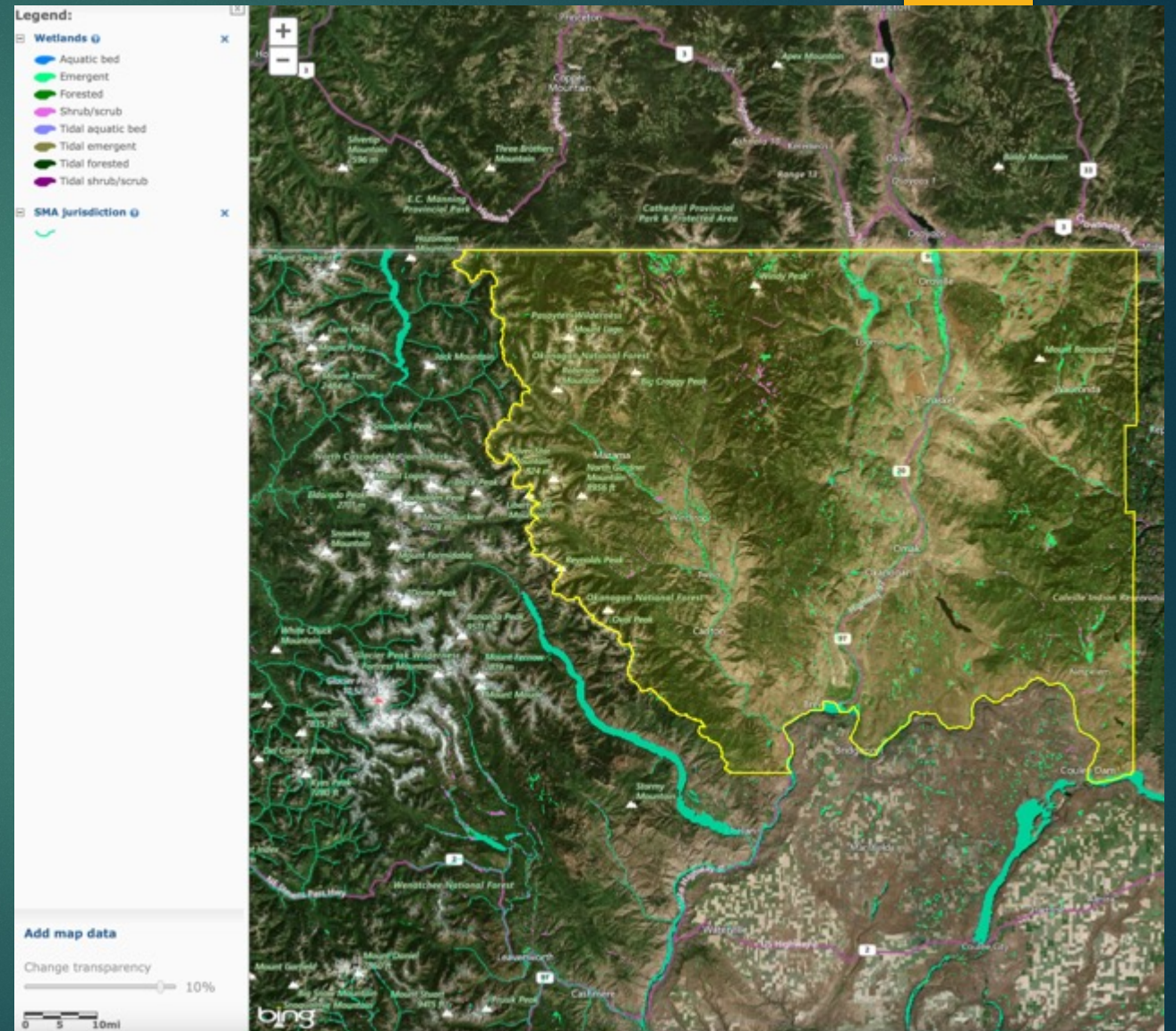
- ▶ The SMA is a state law (RCW 90.58)
- ▶ Provides a framework for managing, accessing, and protecting shorelines.
 - ▶ Goal: prevent the inherent harm from uncoordinated and piecemeal development of shorelines.
- ▶ Reflects the strong interest of the community for recreation, protection of natural areas, aesthetics, and commerce on Washington's shorelines and waterways.
- ▶ Is a cooperative program between Okanogan County and the Department of Ecology (Ecology).



Photo by Michelle Miller

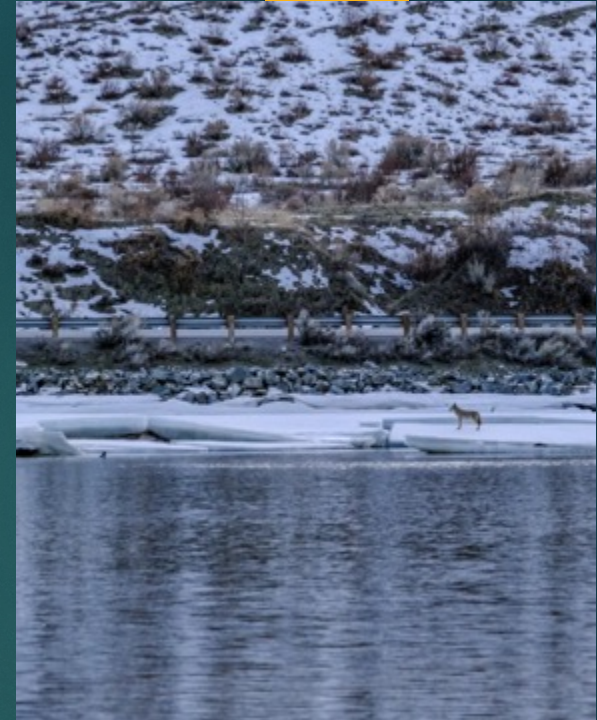
Where SMA Applies

- ▶ The SMA applies to:
 - ▶ Marine waters
 - ▶ Rivers and streams over 20 cubic feet per second mean annual flow
 - ▶ Lakes and reservoirs 20 acres and greater
 - ▶ Adjacent areas, typically within 200 feet of the Ordinary High Water Mark (OHWM)
 - ▶ Wetlands



Shorelines of Statewide Significance

- ▶ There are six rivers* of statewide significance in Okanogan County:
 - ▶ Chewuch
 - ▶ Methow
 - ▶ Okanogan
 - ▶ Similkameen
 - ▶ Twisp
- ▶ There are three lakes** of statewide significance in Okanogan County:
 - ▶ Lake Osoyoos
 - ▶ Palmer Lake
 - ▶ Lake Pateros



Photos by Michelle Miller



SSS Continued



- ▶ Shorelines of Statewide Significance are subject to additional use preference policies contained in RCW 90.58.020. Preference shall be given to the uses in the following order:
 - ▶ (1) Recognize and protect the statewide interest over local interest;
 - ▶ (2) Preserve the natural character of the shoreline;
 - ▶ (3) Result in long term over short term benefit;
 - ▶ (4) Protect the resources and ecology of the shoreline;
 - ▶ (5) Increase public access to publicly owned areas of the shorelines;
 - ▶ (6) Increase recreational opportunities for the public in the shoreline;
 - ▶ (7) Provide for any other element as defined in RCW 90.58.100 deemed appropriate or necessary.

Shoreline Master Program (SMP)



Photo by Michelle Miller

- ▶ SMP is:
 - ▶ A planning and regulatory document
 - ▶ Prepared by local government
 - ▶ Subject to laws (RCW 90.58)
 - ▶ Subject to rules (WAC 173-26)
- ▶ SMP contains local policies and regulations

SMP (CONTINUED)

- ▶ Okanogan County
 - ▶ Initiates and plans SMP
 - ▶ Administers and enforces the SMP
- ▶ Ecology
 - ▶ Provides grant funds for SMP updates
 - ▶ Must approve SMP
 - ▶ Reviews and approves conditional use permits and variances

Preferred Uses of Shorelines

- ▶ The preferred uses of the shoreline, in preference order are:
 - ▶ Protect and restore
 - ▶ Water dependent and water related uses
 - ▶ Mixed use developments
 - ▶ Water related and water enjoyment uses
 - ▶ Single family residential uses



Photos by Michelle Miller

Periodic Review - Schedule

- ▶ Okanogan County's SMP was finalized in 2018 after an 11-year process that involved hundreds of people, including property owners, a science advisory panel, non-profit organizations, tribal governments, and state and local government staff.
- ▶ This periodic update will be finalized in the summer of 2023.

SMP Periodic Review Timelines and Process	Tasks
PHASE 1: PROJECT OVERVIEW AND INITIATE PUBLIC PARTICIPATION Winter 2022 Planning Commission (PC) Meeting	<ul style="list-style-type: none">▪ Review public participation plan▪ Announce launch of website and survey▪ Engage with public and stakeholders
PHASE 2: PERIODIC REVIEW CHECKLIST Winter 2022 PC Meeting	<ul style="list-style-type: none">▪ Present PowerPoint Presentation▪ Review periodic update checklist▪ Engage with public and stakeholders
PHASE 3: DRAFT UPDATED MASTER PROGRAM Winter 2023 PC Meeting	<ul style="list-style-type: none">▪ Complete draft SMP▪ Review draft code amendments▪ Online open house refresh with draft code amendments▪ Initiate public review and comment period
PHASE 4: PUBLIC REVIEW PROCESS Winter 2023 PC Public Hearing	<ul style="list-style-type: none">▪ Complete SEPA Checklist & notice SEPA comment period concurrent with SMP Revision comment period▪ Submit checklist to SEPA portal▪ Revisit and revise based on comments▪ Public Hearing with Planning Commission▪ Recommendation to Board of County Commissioners (BOCC)
PHASE 5: <u>BOCC APPROVAL</u> Spring 2023 <u>BOCC</u> Public Hearing	<ul style="list-style-type: none">▪ Final draft SMP, Record & PC Recommendation transmitted to BOCC.▪ Public Meeting with BOCC for final approval and adoption by ordinance. No public comment accepted at this meeting
PHASE 6: STATE APPROVAL & ADOPTION Summer 2023	<ul style="list-style-type: none">▪ Submit draft amendments and checklist to Ecology for review▪ Revise documents as needed▪ Submit final draft and checklist to Ecology for final determination

Scoping

- ▶ Consistency review of existing SMP
- ▶ What needs to be updated?
- ▶ Shoreline issues?
 - ▶ Flooding
 - ▶ Public access
 - ▶ Habitat loss
 - ▶ Vegetation
- ▶ Restoration needed?



Photos by Michelle Miller

Public Participation Plan

- ▶ County Website
- ▶ Survey



Photos by Michelle Miller



- ▶ One of the policies in the SMA is to promote public access and enjoyment opportunities.
 - ▶ Allows community to realize vision for the shorelines
 - ▶ Allows for strategic development
 - ▶ Preserves shorelines for future generations
 - ▶ Maintains and encourages public access

Survey

- ▶ 13 question survey
- ▶ <https://www.surveymonkey.com/r/OkanoganCountySMP>

Survey Okanogan County Shoreline Master Program Update

The County of Okanogan is conducting a periodic review and update of its Shoreline Master Program (SMP) as required by state law. The SMP applies to all lakes over 20 acres, and larger streams (over 20 cubic feet per second) as well as associated wetlands and uplands at least 200 feet on a horizontal plane from the Ordinary-High-Water-Mark of the shoreline. The Methow River, Chewuch River, Okanogan River, Similkameen River, Twisp River, Lake Osoyoos, Palmer Lake, Lake Pateros, and any associated wetlands are examples of some of the shorelines within the jurisdiction of the SMP. This project will focus on updating policies and regulations to ensure consistency with current state law. **Your input is important to this process. Please help guide this project by providing your input to the following questions.** Skip any that do not apply to you.

1. What is your relationship to shorelines in Okanogan County? (Check all that apply)

- ☐ I recreate along shorelines (e.g. walk beaches or trails, camp near shorelines, etc.).
- ☐ I boat or fish on the water bodies.
- ☐ I have a business dependent on Okanogan County shorelines.
- ☐ I own, rent or have access to, property within 200 feet of the shorelines in Okanogan County.
- ☐ If yes, name all that apply
- ☐ Other (please specify)

2. The state Shoreline Management Act requires local SMPs to balance three goals: Use & Development, Public Access, and Resource Protection along our local shorelines of the state. Which of the following SMP Governing Principles are important to you (select all that apply):

- ☐ Achieving local planning policies through both regulatory & non-regulatory means
- ☐ Ensuring local regulations are consistent with state laws & rules
- ☐ Avoiding infringement upon private property rights
- ☐ Applying SMP regulations only to shoreline areas & applying SMP planning functions more broadly across watersheds
- ☐ Protect shoreline ecological functions

Discussion

- ▶ Questions
- ▶ Comments
- ▶ Suggestions



Photos by Michelle Miller