

OKANOGAN COUNTY COMMISSIONERS

ORDINANCE 2012 -- 003

Amendment to the list of County Roads open for Off-Road Vehicles (ORV)

WHEREAS, Okanogan County Code, Section 10.10 provides for the opening of specific county roads for dual use by Off-Road Vehicles (ORV), and

WHEREAS, such County Roads are to be designated by Ordinance for dual use purposes; and

WHEREAS, a request to include OCR 9425, Loomis Oroville Road, 4066 Toats Coulee Road, 9221 Salmon Creek Road, 9229 Conconully Road and

WHEREAS, a public hearing was advertised and held on July 24th, 2012 and testimony heard in the matter; and

BE IT THEREFORE RESOLVED, that OCR 9425, Loomis Oroville Road, MP 11.37-13.62, OCR 4066 Toats Coulee Road MP 0.00-0.71, OCR 9221 Salmon Creek Road MP 12.60-15.41, OCR 9229 Conconully Road, MP 15.63-18.68 (Conconully City Limits) being 8.82 additional miles open for (O.R.V.) use in accordance with the provisions on Okanogan County Code, Section 10.10 and RCW 46.09.

BE IT FURTHER RESOLVED, that the attached list of county roads be opened for (O.R.V.) Off-Road Vehicles use in accordance with the provisions of Okanogan County Code, Chapter 10.10 and RCW 46.09.

DATED at Okanogan, Washington this 24th day of July 2012.

BOARD OF COUNTY COMMISSIONERS
OKANOGAN, WASHINGTON






Jim DeTro, Chairman




Andrew Lampe, Member



Don (Bud) Hover, Member

ATTEST:



Laleña Johns, Clerk of the Board

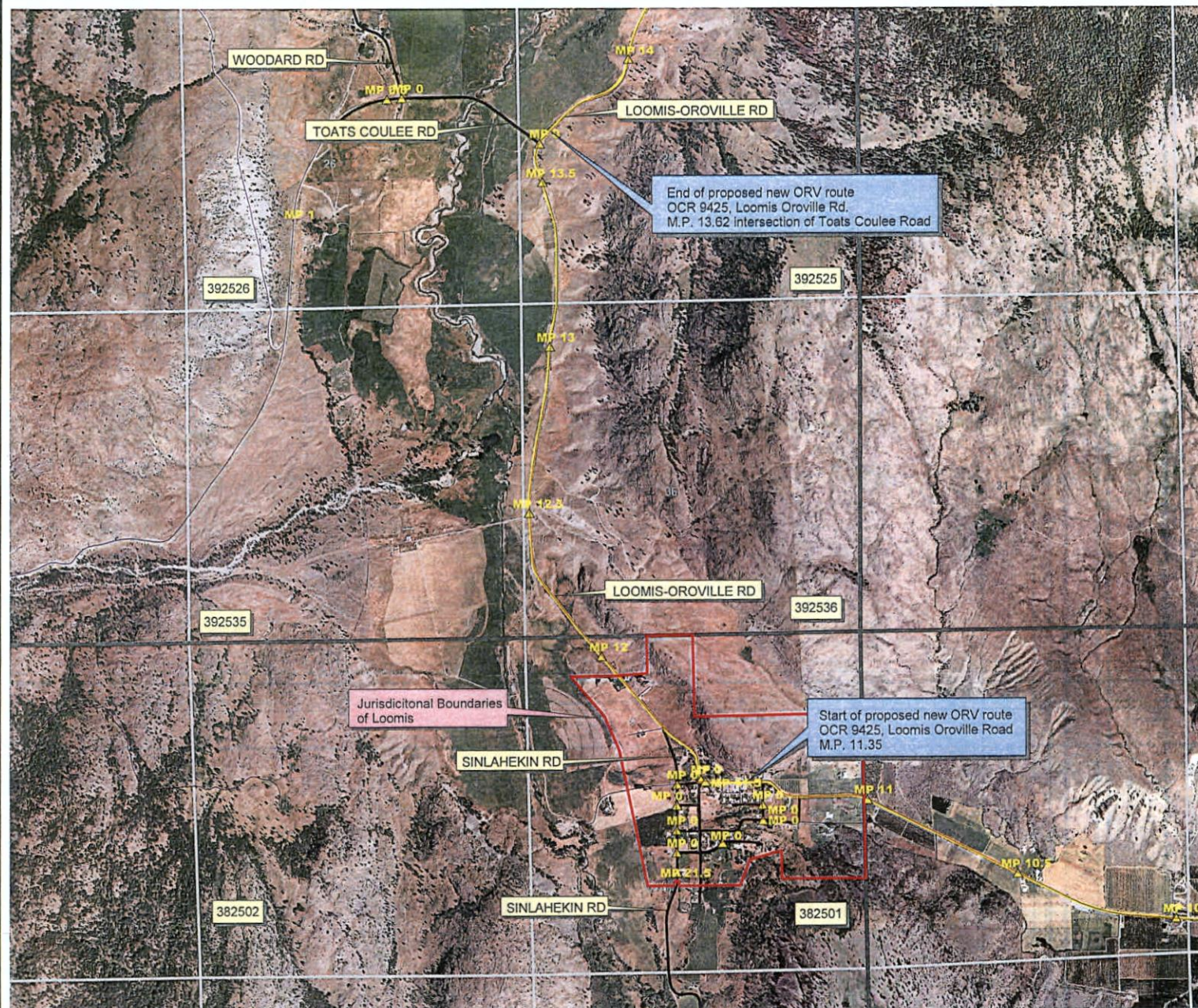
ATTACHMENT "A"

Okanogan County Off-Road Vehicles (O.R.V.) Roads

Road #	Road Name	Beginning M.P.	Ending M.P.	Total Miles
2017	West Fork Road	0.54	3.11	2.57
2045	Loup Loup Canyon	0.00	12.72	12.72
2048	Peacock Mountain Road	0.00	2.44	2.44
2056	Bawlf Road	0.00	0.85	0.85
2065	Buzzard Lake Road	0.00	13.71	13.71
2119	Windy Hill Road	0.00	5.51	5.51
2195	Dry Coulee Road	1.11	2.39	1.28
2230	Okanogan Cemetery Road	0.13	0.43	0.30
2340	Mineral Hill Road	0.22	4.05	3.83
2241	East Dry Coulee Road	0.00	1.54	1.54
2361	North Fork Salmon Creek Rd.	0.45	1.89	1.44
2263	Wood Hill Road	0.00	0.31	0.31
4015	Sinlahekin Road	0.24	21.94	21.70
4056	Cecil Creek Road	0.00	4.46	4.46
4066	Toats Coulee Road	0.00	0.71	0.71
4282	South Fish Lake Road	0.00	1.82	1.82
4290	Fish Lake Road	0.00	1.60	1.60
9213	Spring Coulee Road	3.36	3.79	0.43
9221	Salmon Creek Road	12.60	15.41	2.81
9229	Conconully Road	15.63	18.68	3.05
9425	Loomis Oroville Road	11.37	13.62	2.25

Total miles open for ORV use

±85.33

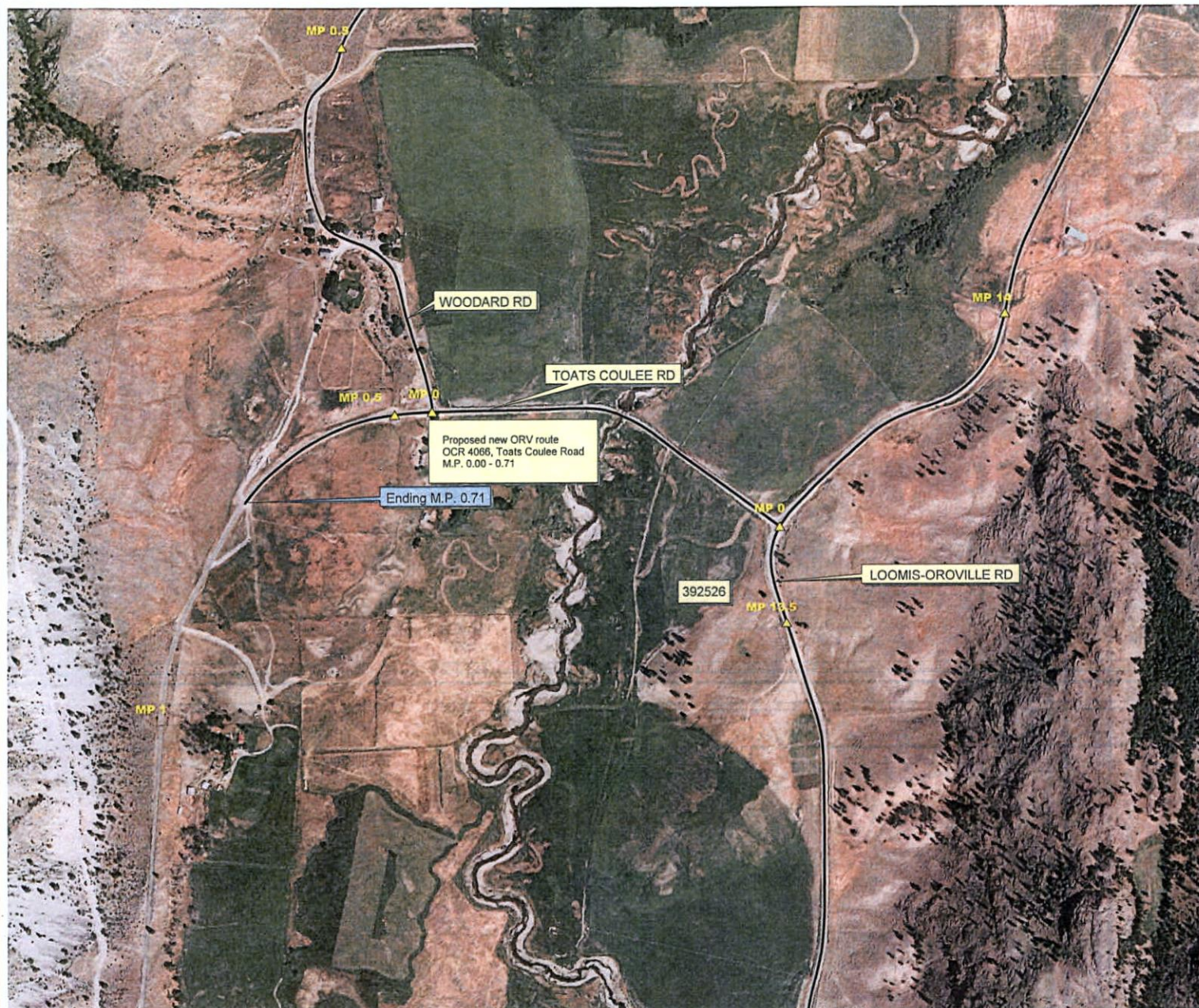


**Proposed road for ORV use
OCR 9425, Loomis Oroville Rd.
M.P. 11.35 to M.P. 13.62**



NOTICE:
The information displayed on this map is for evaluation purposes only and does not represent actual surveyed boundaries or locations. Okanogan County does not grant permission for the reproduction of the information. Map features from all sources have been adjusted to achieve the "best fit". While great care was taken in this process, maps from different sources rarely agree as to the precise location of geographic features.

0 1000 2000 3000 Feet

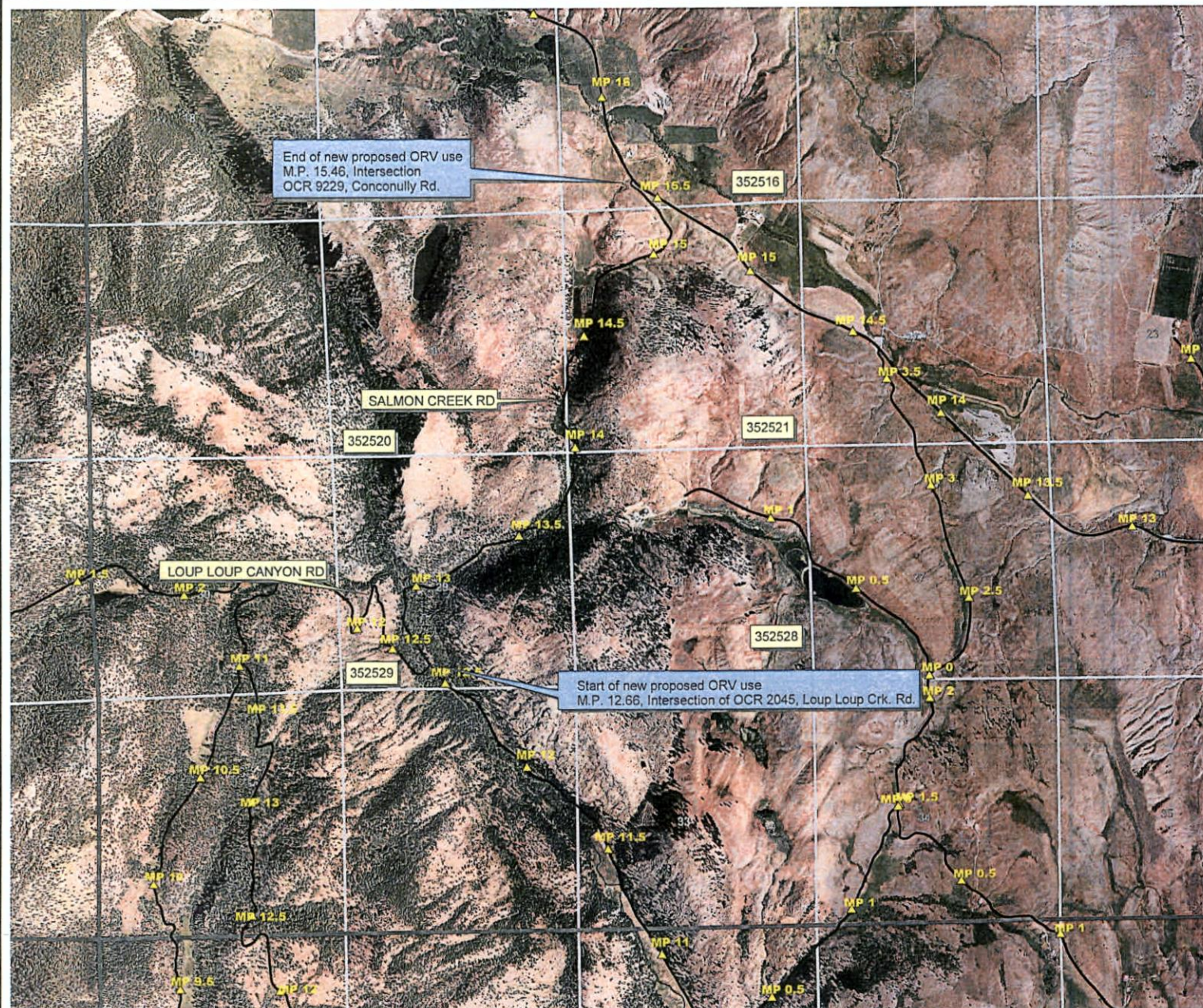


**Proposed road to add for ORV use
OCR 4066, Toats Coulee Rd.
Starting and ending M.P. 0.00 to 0.71**

 Map marker.shp
 County Roads

NOTICE:
The information displayed on this map is for evaluation purposes only and does not represent actual surveyed boundaries or locations. Okanagan County does not grant permission for the reproduction of the information. Map features from all sources have been adjusted to achieve the "best fit". While great care was taken in this process, maps from different sources rarely agree as to the precise location of geographic features.

0 400 800 1200 Feet

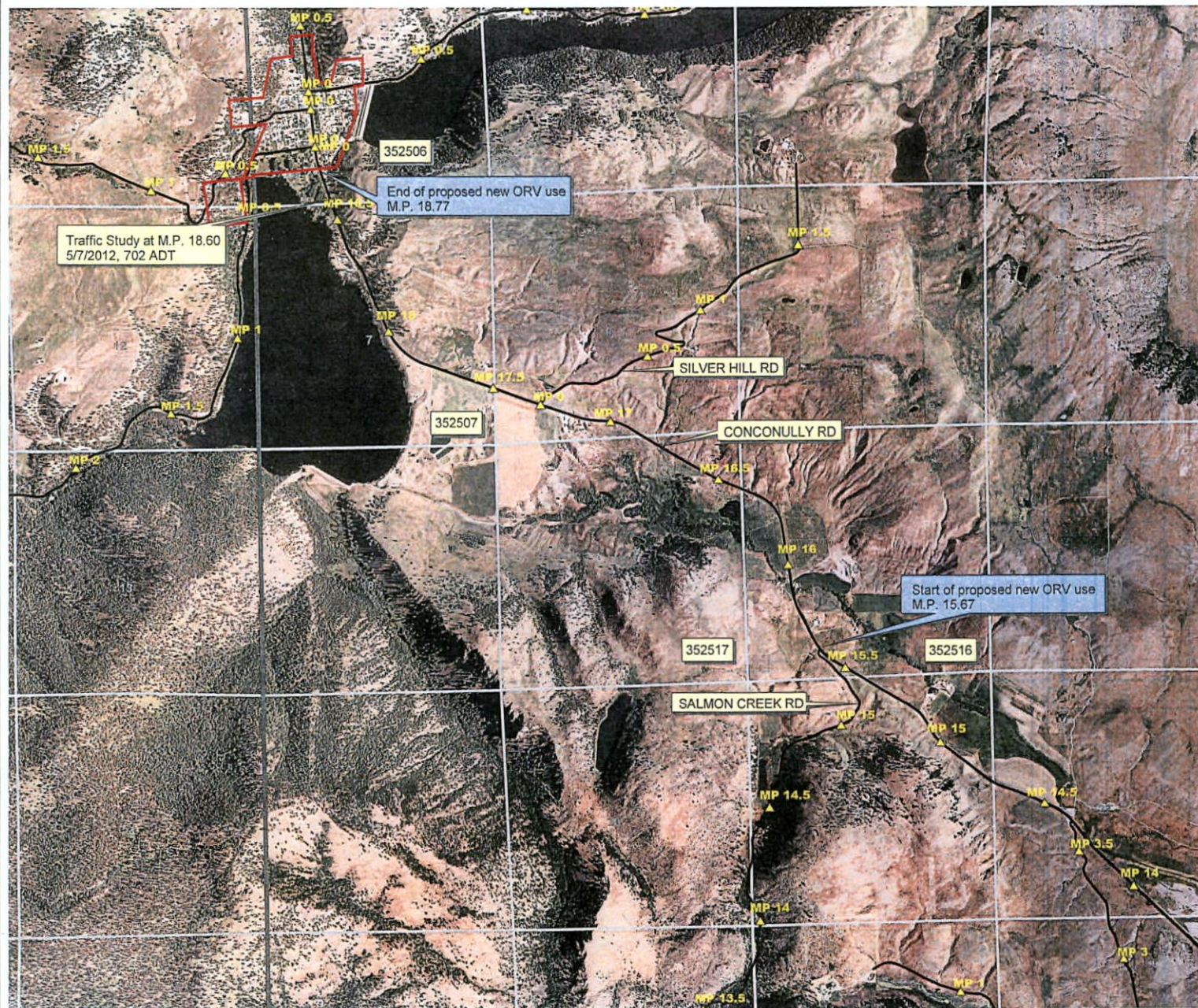


Proposed road to add for ORV use
OCR 9221, Salmon Creek Rd.
Starting at M.P. 12.66, Intersection with
OCR 2045, Loup Loup Creek Rd.
Ending at M.P. 15.46, Intersection of
OCR 9229, Conconully Road.

top range labels
 Mp. marker.shp
 County Roads

NOTICE:
 The information displayed on this map is for evaluation purposes only and does not represent actual surveyed boundaries or locations. Okanogan County does not grant permission for the reproduction of the information. Map features from all sources have been adjusted to achieve the "best fit". While great care was taken in this process, maps from different sources rarely agree as to the precise location of geographic features.

0 1000 2000 3000 Feet

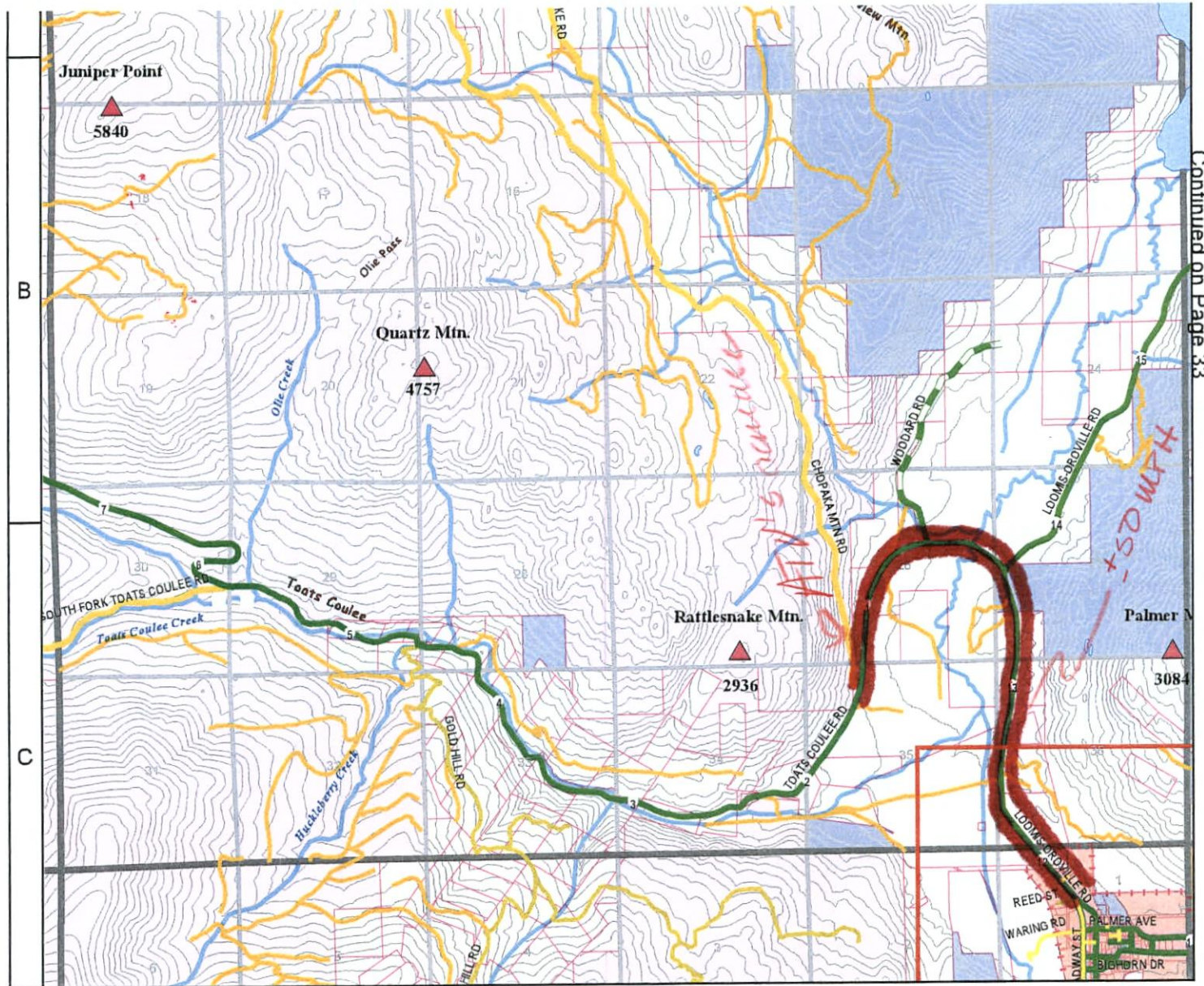


Proposed road to add for ORV use
OCR 9229, Conconully road
Starting at M.P. 15.67, Intersection with
OCR 9221, Salmon Creek Road
Ending at M.P. 18.77, Conconully City Limits

- Okatowns.shp
- tsp range labels
- Mp_marker.shp
- County Roads

NOTICE:
The information displayed on this map is for evaluation purposes only and does not represent actual surveyed boundaries or locations. Okanogan County does not grant permission for the reproduction of the information. Map features from all sources have been adjusted to achieve the "best fit". While great care was taken in this process, maps from different sources rarely agree as to the precise location of geographic features.

0 1000 2000 3000 Feet

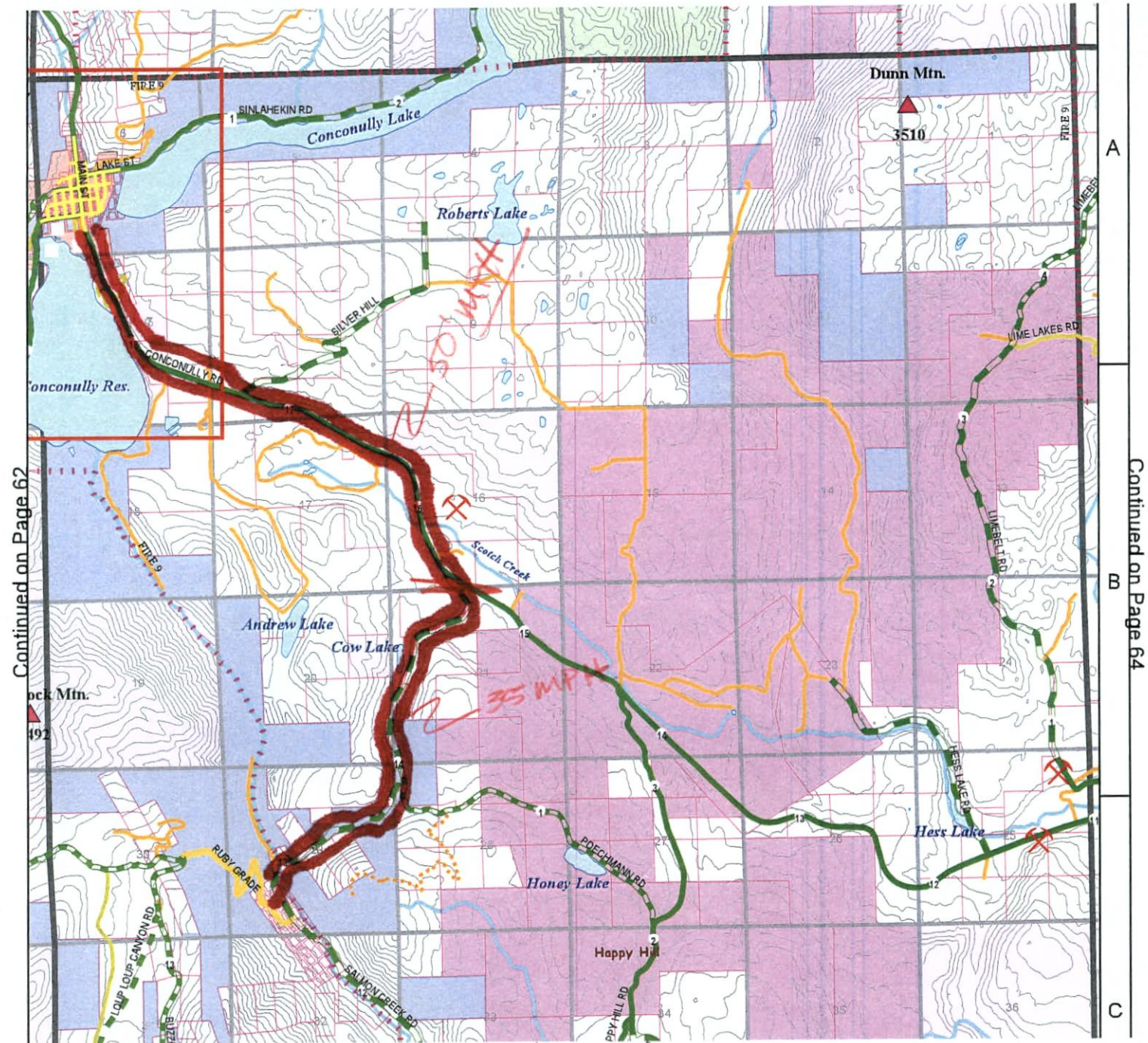


Continued on Page 33

Continued on Page 39

32

Okanogan County road access for ATV's
Loomis to Chopaka Mountain Road



Okanogan County road access for ATV's
Ruby Grade to Conconully