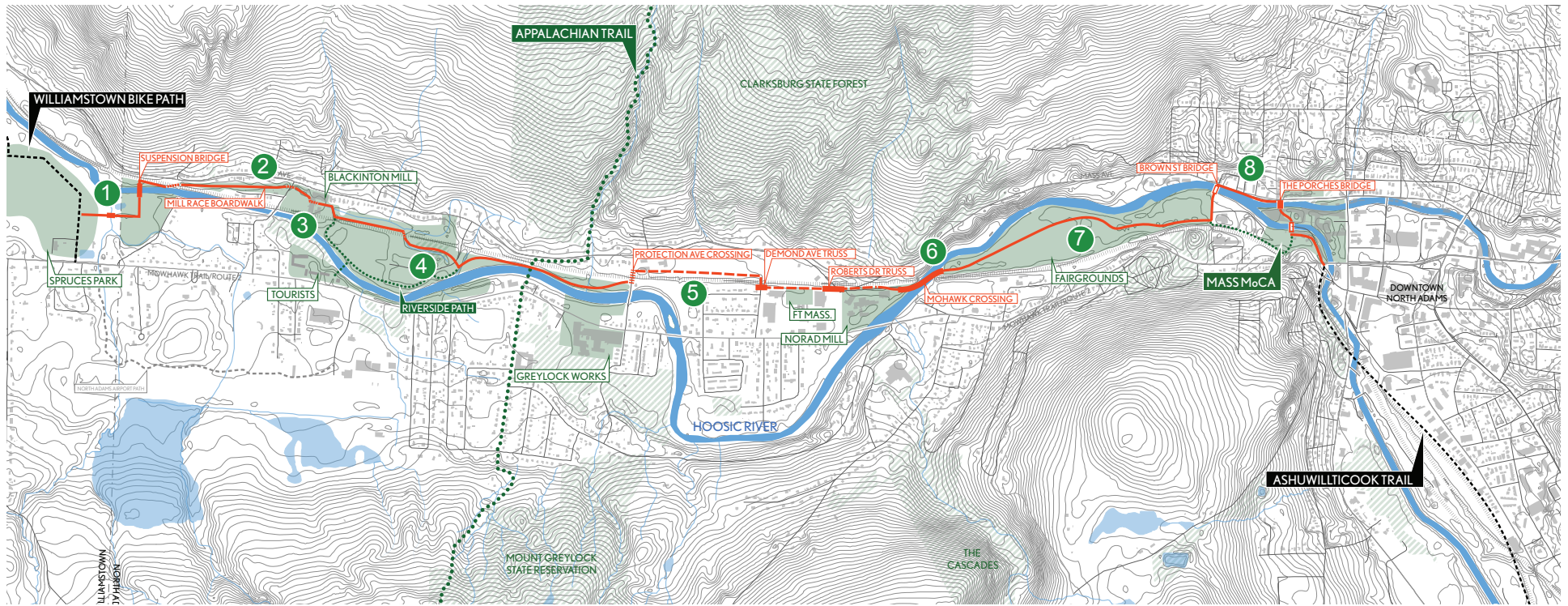


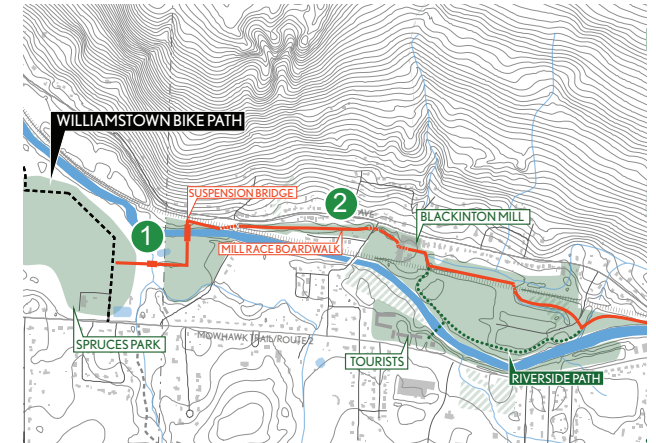


NORTH ADAMS ADVENTURE TRAIL



NORTH ADAMS ADVENTURE TRAIL

The Adventure Trail is a 3.4-mile pedestrian/bike trail from the Williamstown line to downtown North Adams, effectively linking MASS MoCA and MCLA to Williams College and The Clark. The Trail is the artery for a circulation network connecting existing and future community and cultural assets while also providing new access to underutilized nature resources. It addresses the community needs of safe alternative transportation, public health and wellness, and intra-neighborhood connectivity. As envisioned, it will be an independent attraction, encouraging new generations to visit and, more importantly, to stay, explore, and settle in North Adams.



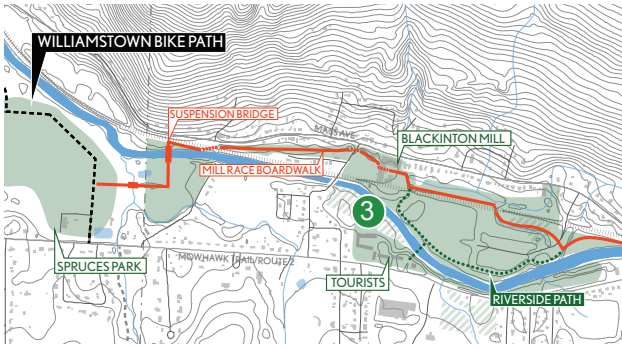
SUSPENSION BRIDGE (TOP)

The adventure begins as you cross the beautiful Hoosic River on a new suspension bridge, literally and metaphorically linking the communities of Williamstown and North Adams.

MILL TAIL RACE BOARDWALK (LEFT)

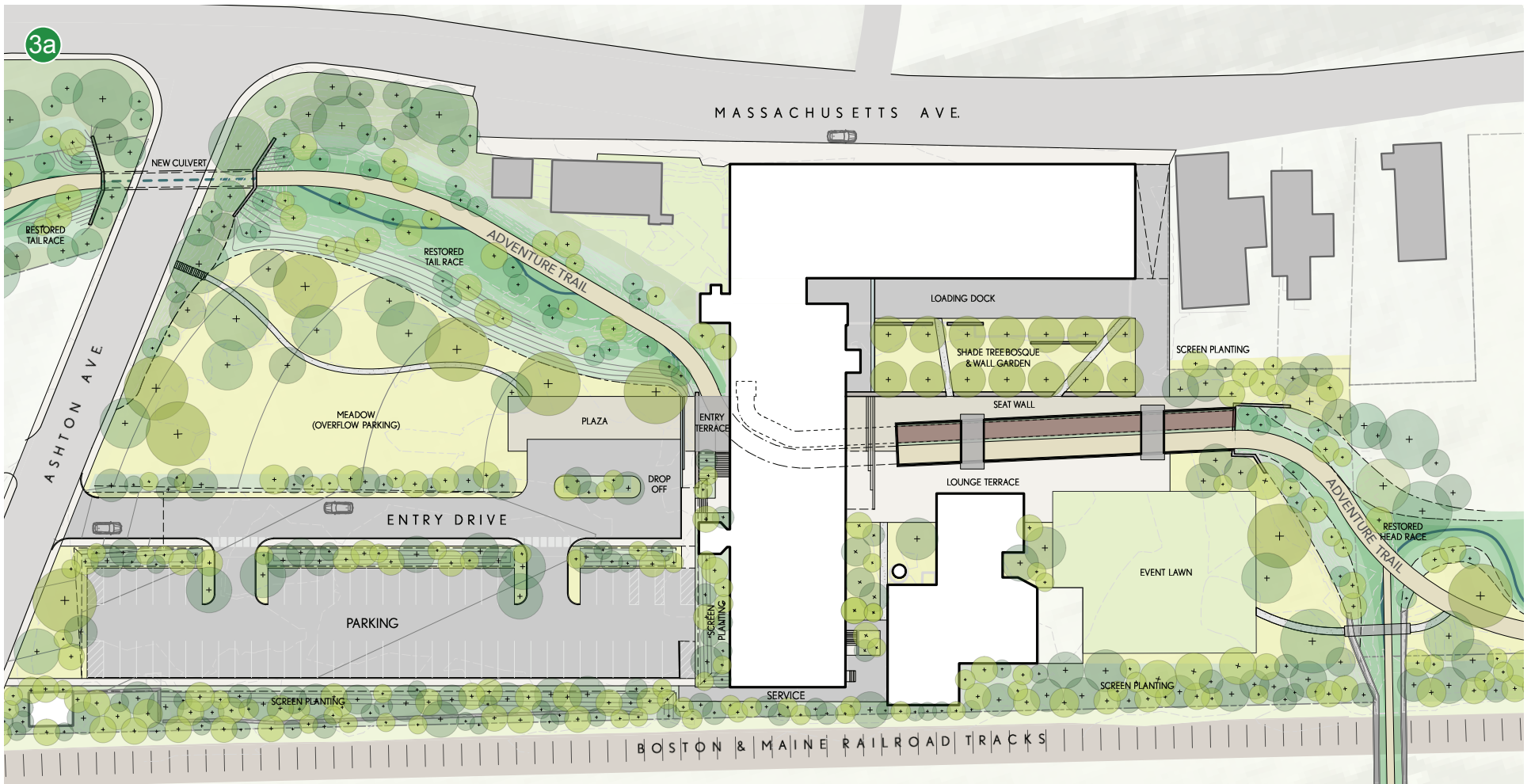
You'll pedal/walk east toward North Adams on an elevated boardwalk path through the restored tailrace of the Blackinton Mill.

NEPONSET RIVER GREENWAY - MATTAPAN & MILTON, MA
BY CSS LANDSCAPE ARCHITECTS, PHOTOS BY ANTON GRASSL



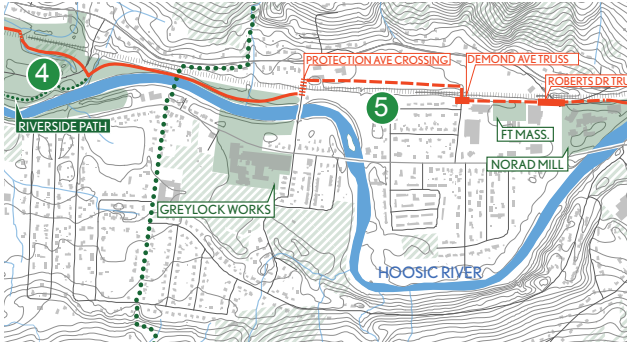
BLACKINTON MILL

The boardwalk path continues underneath Ashton Avenue via a new box culvert and approaches the Blackinton Mill through a former industrial waterway. A newly landscaped meadow and adjacent parking area lie just south of the trail.





The trail proceeds through the c. 1917 Blackinton Mill, following the subterranean path of massive century-old pipes that supplied water to the complex before daylighting in a new piazza-like courtyard.



RIVERSIDE PATH

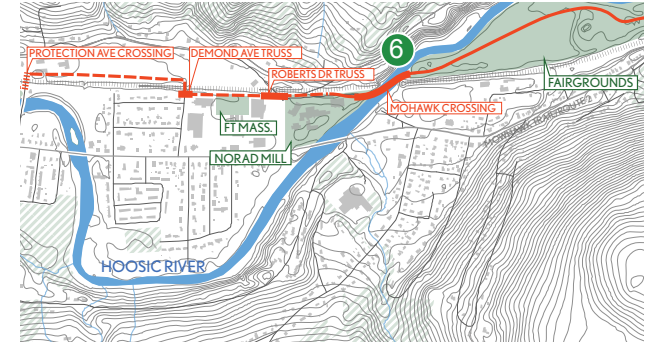
The path continues east through the verdant forest of the TOURISTS resort campus following the winding of the Hoosic River and intersecting with the Appalachian Trail.

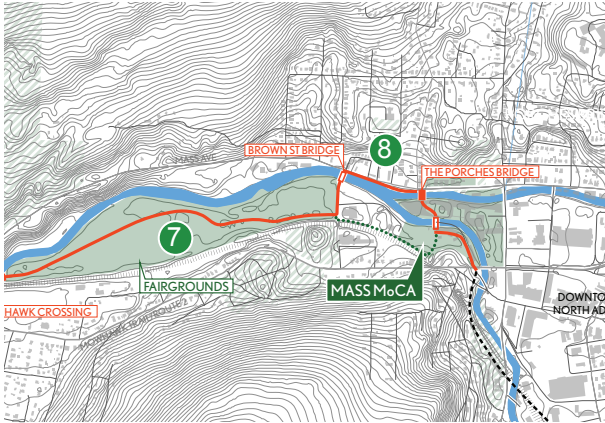
PHOTOS: NEPONSET RIVER GREENWAY - MATTAPAN & MILTON, MA
BY CSS LANDSCAPE ARCHITECTS, PHOTOS BY ANTON GRASSL



MOHAWK CROSSING

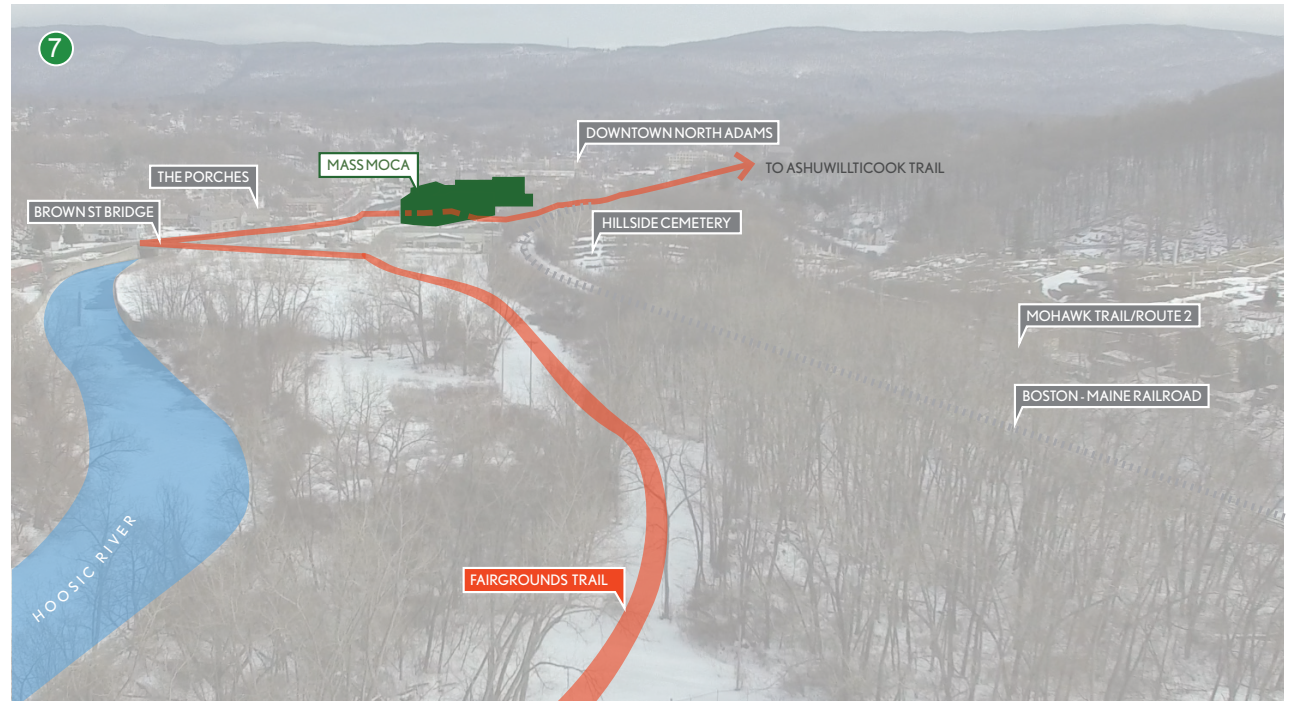
Just east of the redeveloped Norad Mill lies an ancient Native American river ford. The Adventure Trail will honor this history with the Mohawk Crossing, a serpentine bridge traversing the Hoosic River.





FAIRGROUNDS TRAIL

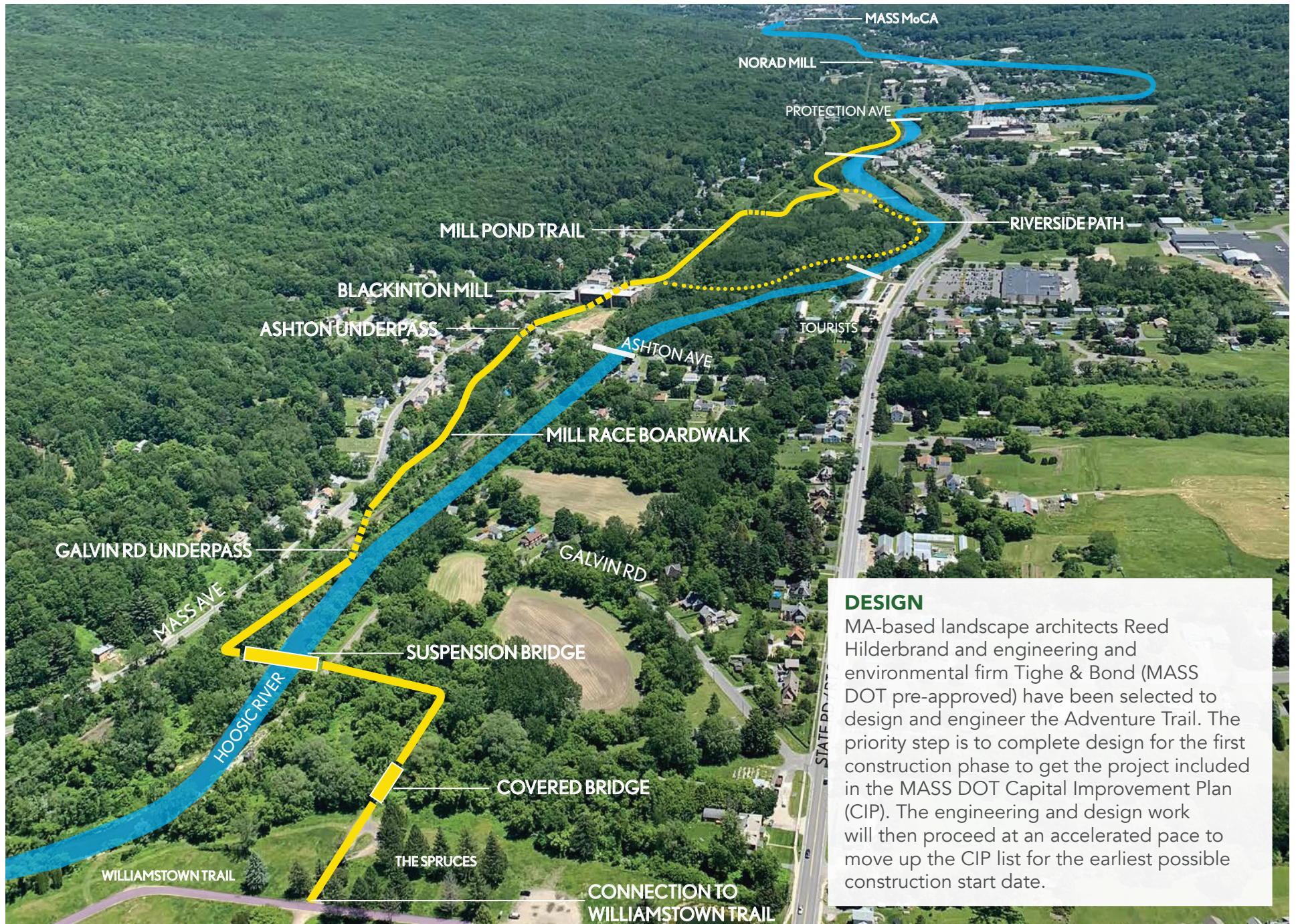
Approaching Downtown North Adams, the Trail passes through the historic North Adams Fairgrounds site before crossing Brown Street and passing the Porches Inn.



MASS MoCA

A new bridge over the north branch of the Hoosic brings the trail inside the MASS MoCA campus via a mural-filled passageway in Building 6. Construction of this bridge has been privately funded (\$500K investment) and the passageway at MASS MoCA is complete (\$300K investment).





DESIGN

MA-based landscape architects Reed Hilderbrand and engineering and environmental firm Tighe & Bond (MASS DOT pre-approved) have been selected to design and engineer the Adventure Trail. The priority step is to complete design for the first construction phase to get the project included in the MASS DOT Capital Improvement Plan (CIP). The engineering and design work will then proceed at an accelerated pace to move up the CIP list for the earliest possible construction start date.

ECONOMIC IMPACT

The North Adams Partnership is working to raise \$1.9M for the City of North Adams to finance the engineering and design of the North Adams Adventure Trail. Over \$500K in private investment has already funded the initial conceptual design and significant land acquisition for the Trail. MASS DOT, the state entity that will fund the construction - but not the design - of the Trail, estimates construction costs at \$18M-\$20M. Currently identified private business development enabled by the Trail's construction would add another \$9M. Together the ~\$30M capital infusion will generate 59 permanent jobs and will produce an initial annual economic impact in excess of \$6 million.*

* The Economic Impacts of Blackinton/North Adams/MassWorks by Stephen Sheppard and Ricardo Torres-Garzon, Williams College Center for Creative Community Development, August 2019

A BRIEF HISTORY OF THE NORTH ADAMS ADVENTURE TRAIL

For nearly two decades, local and regional public entities have attempted to design a multiuse trail connecting Williamstown and North Adams. The north/south Ashuwillticook Trail between Lanesboro and Adams is a great success, but was almost entirely a rail-to-trail conversion. The rail lines in North Adams and Williamstown are still active and thus an alternate path solution is required. The various designs proposed over the years involved crossing Route 2 many times (six crossings in the most recent version), passed through residential neighborhoods that loudly objected to a bike trail in their backyards, and were hindered by other inherent flaws. With changing leadership/personnel and lack of community support each proposal lost steam and was eventually shelved.

Fortunately, a new coalition of private stakeholders has been working independently on a solution, a bold and innovative route that would safely continue the Williamstown bike path (breaking ground in 2020) from the North Adams town line east to MASS MoCA. This 3.4 mile scenic path, called the Adventure Trail, crosses the Hoosic River multiple times, incorporates elevated boardwalks through abandoned industrial waterways, reimagines century-old infrastructure, highlights North Adams history, passes through two re-purposed mill buildings and, most importantly, never once crosses Route 2! The long-term goal is to connect with the Ashuwillticook Trail to the south - allowing for a full circumnavigation of Mt. Greylock - but the Adventure Trail is laser-focused on connecting cultural, educational, and recreational assets in North Adams and Williamstown.

This Adventure Trail concept has received strong support from the local and governmental groups to whom it has been presented. MASS DOT, the entity that will fund and oversee the Adventure Trail construction (but not the design) is equally excited and has urged us to complete the Design/Engineering work as quickly as possible so that the project can be prioritized in their Capital Improvement Plan.

