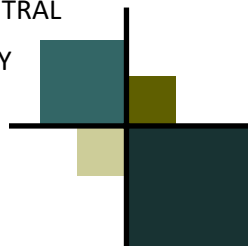


Features and Available Services

20 UNIT FACILITY
ALL UNITS HAVE FULL KITCHEN
DAILY NOON MEAL - 7 DAYS A WEEK
LIBRARY
SECURE ENTRANCE
BEAUTY SALON SERVICES AVAILABLE
ACTIVITIES AND PROGRAMS
ALL UTILITIES INCLUDED (except phone) HEAT
AND AIR CONDITIONING EXPANDED BASIC
CABLE
WEEKLY LIGHT HOUSEKEEPING
LAUNDRY FACILITIES ATTACHED
GARAGES
24 HOUR EMERGENCY SYSTEM
SPRINKLERS AND ALARMS
MEDICAL CENTER ACCESS
GUEST ROOM AVAILABLE FOR RENT
GUEST PARKING
ELEVATOR
LARGE COMMON AREAS CENTRAL
DINING AREA LARGE ACTIVITY
ROOM



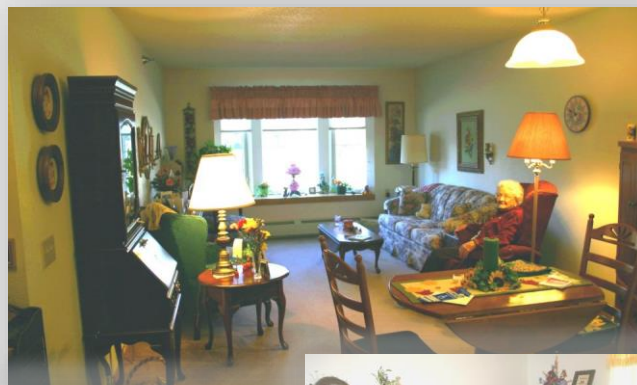
Our Staff

Our staff is available Monday
through Friday from
7:00 a.m. - 3:30 p.m.

Director: Jessica Bjerke
Housekeeper: Della Bennett

507-836-8980

*We are here to help you take the next
step in your independent living*



Sunrise Terrace

An Independent Living Facility

*A Home For Your
Golden Years*



2121 Ironwood
Slayton, MN 56172

Director:
Jessica Bjerke
507-836-8980

SunriseTerrace@co.murray.mn.us

An Independent Senior Community

A Place to call home...

Choosing retirement housing is an important decision. At times, home ownership can become expensive and burdensome. This senior housing complex will offer you fewer responsibilities yet maintain your privacy.

As a person ages, social networks may change, and friends and family may not live close by. At Sunrise Terrace we want to make sure you maintain your independence and your social life.

Our goal is to maintain a safe place to live while creating a environment for you to socialize in a place you call home.



Comfortable Living

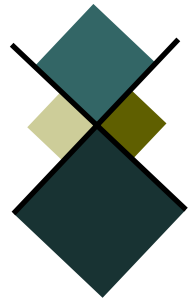
Living next to the Murray County Medical Center, you will have the added safety and security knowing health care is a few steps away.

Rental Rates

Rentals are on a month-to-month basis. Monthly rent includes all utilities (except telephone), a noon meal each day, light weekly housekeeping of kitchen and bathroom, 24-hour medical emergency pull-cord system, basic expanded cable, air conditioning, use of commons area, and easy access to the Murray County Medical Center.

Rental Rates (as of July 1, 2024):

- One Bedroom:** (635 Square Feet) Obstructed View: \$1,150 per month
- One Bedroom:** (635 Square Feet): \$1,445 per month
- One Bedroom with Den:** (748 Square Feet): \$1,640 per month
- Deluxe One Bedroom with Den:** (811 Square Feet): \$1,695 per month
- Additional Tenant:** \$230 to cover the additional meal plan per month
- Garage:** \$55 per month
- Guest Meal:** \$8.25 each plus tax
- Guest Room Rental:** \$55 plus tax per day
- Deposit:** \$600



*A helping hand...
...when you need it*

What is Congregate Living?

Congregate Living is often referred to as "independent" living. This is a housing option that assumes the occupants are relatively independent. The apartments offer the same amenities available at any other apartment complex. Each of the units has a complete kitchen, living room, bedroom and bathroom.

Additional Health Services

Shetek Home Health has an office nearby in the Murray County Medical Center that offers various personal care and health related services which allows the tenants to remain in