

## Features and Available Services

---

20 UNIT FACILITY  
ALL UNITS HAVE FULL KITCHEN  
DAILY NOON MEAL - 7 DAYS A WEEK  
LIBRARY  
SECURE ENTRANCE  
BEAUTY SALON SERVICES AVAILABLE  
ACTIVITIES AND PROGRAMS  
ALL UTILITIES INCLUDED (except phone)  
HEAT AND AIR CONDITIONING  
EXPANDED BASIC CABLE  
WEEKLY LIGHT HOUSEKEEPING  
LAUNDRY FACILITIES  
ATTACHED GARAGES  
24 HOUR EMERGENCY SYSTEM  
SPRINKLERS AND ALARMS  
MEDICAL CENTER ACCESS  
GUEST ROOM AVAILABLE FOR RENT  
GUEST PARKING  
ELEVATOR  
LARGE COMMON AREAS  
CENTRAL DINING AREA  
LARGE ACTIVITY ROOM

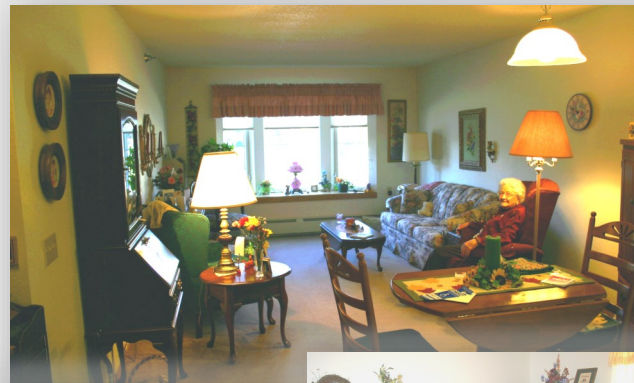
## Our Staff

Our staff is available  
Monday through Friday  
from 7:00 a.m. - 3:30 p.m.

Director: Jessica Bjerke  
Housekeeper: Della Bennett

**507-836-8980**

*We are here to help you take the next  
step in your independent living*



## Sunrise Terrace

## An Independent Living

*A Home For Your  
Golden Years*



2121 Ironwood  
Slayton, MN 56172

Director:  
Jessica Bjerke  
507-836-8980

[SunriseTerrace@co.murray.mn.us](mailto:SunriseTerrace@co.murray.mn.us)

# An Independent Senior Community

## A Place to call home...

Choosing retirement housing is an important decision. At times, home ownership can become expensive and burdensome. This senior housing complex will offer you fewer responsibilities, yet maintain your privacy.

As a person ages, social networks may change and friends and family may not live close by. At Sunrise Terrace we want to make sure you maintain your independence your social life.

Our goal is to maintain a safe place to live while creating a environment for you to socialize in a place you call home.



Comfortable Living

*Living next to the Murray County Medical Center, you will have the added safety and security knowing health care is a few steps away.*

## Rental Rates

Rentals are on a month to month basis. Monthly rent includes all utilities (except telephone), a noon meal each day, light weekly housekeeping of kitchen and bathroom, 24-hour medical emergency pull-cord system, basic expanded cable, air conditioning, use of commons area, and easy access to the Murray County Medical Center.

### Rental Rates (as of July 1, 2022):

**One Bedroom:** (635 Square Feet) Obstructed View: \$1050 per month

**One Bedroom:** (635 Square Feet): \$1345 per month

**One Bedroom with Den:** (748 Square Feet): \$1540 per month

**Deluxe One Bedroom with Den:** (811 Square Feet): \$1595 per month

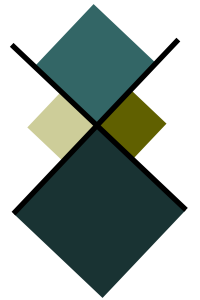
**Additional Tenant:** \$230 to cover the additional meal plan per month

**Garage:** \$50 per month

**Guest Meal:** \$8.25 each plus tax

**Guest Room Rental:** \$45 plus tax per day

**Deposit:** \$600



*A helping hand...  
...when you need it*

## What is Congregate Living?

Congregate Living is often referred to as "independent" living. This is a housing option that assumes the occupants are relatively independent. The apartments offer the same amenities available at any other apartment complex. Each of the units has a complete kitchen, living room, bedroom and bathroom.

## Additional Health Services

Shetek Home Health has an office nearby in the Murray County Medical Center that offers various personal care and health related services which allows the tenants to remain in