

9-1-1 STANDARDS & BEST PRACTICES CONFERENCE >>>



The Future of GIS in the 9-1-1 World

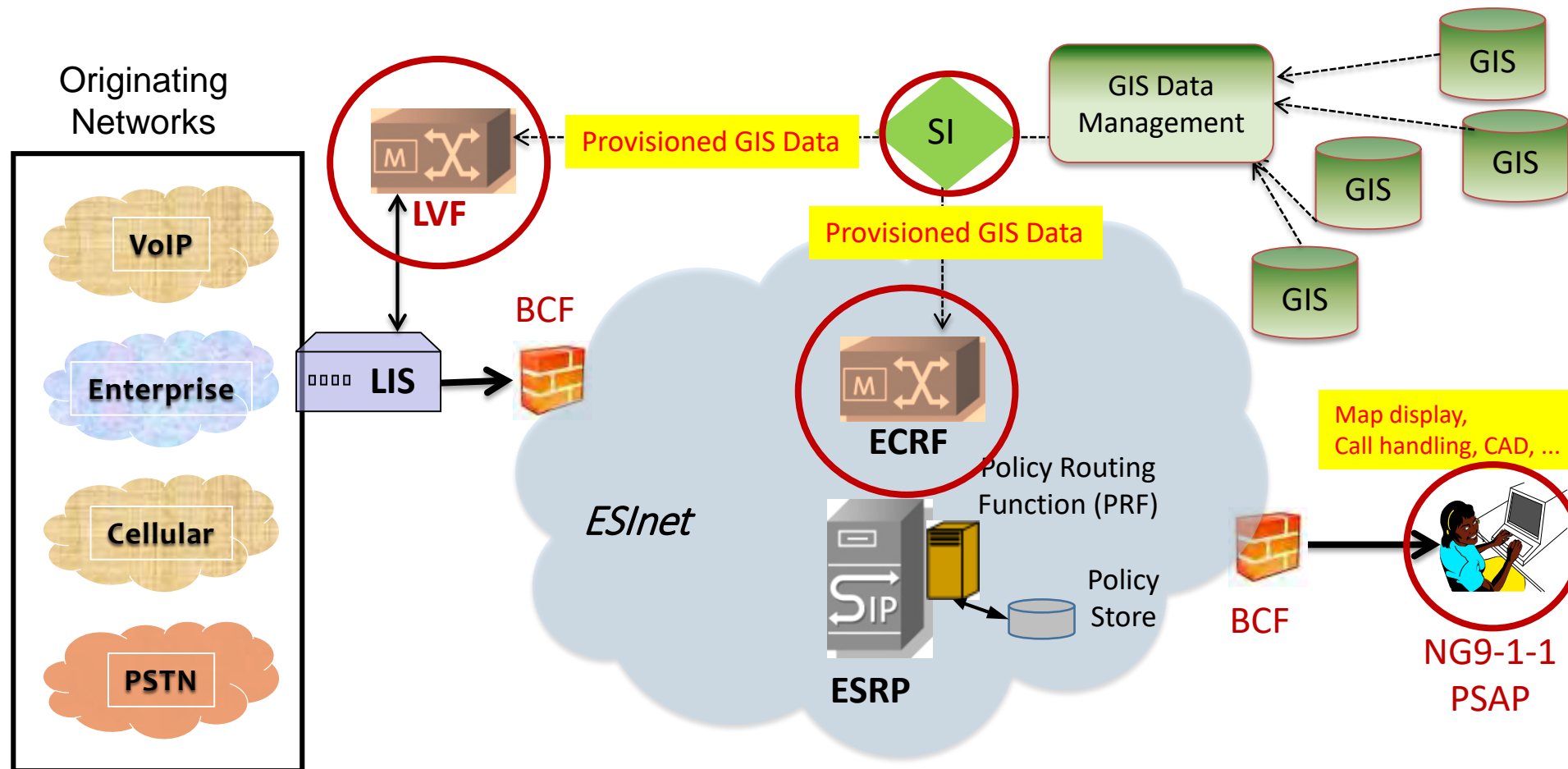
Jason Horning, ENP

Marc Berryman, ENP

Jeff Smith

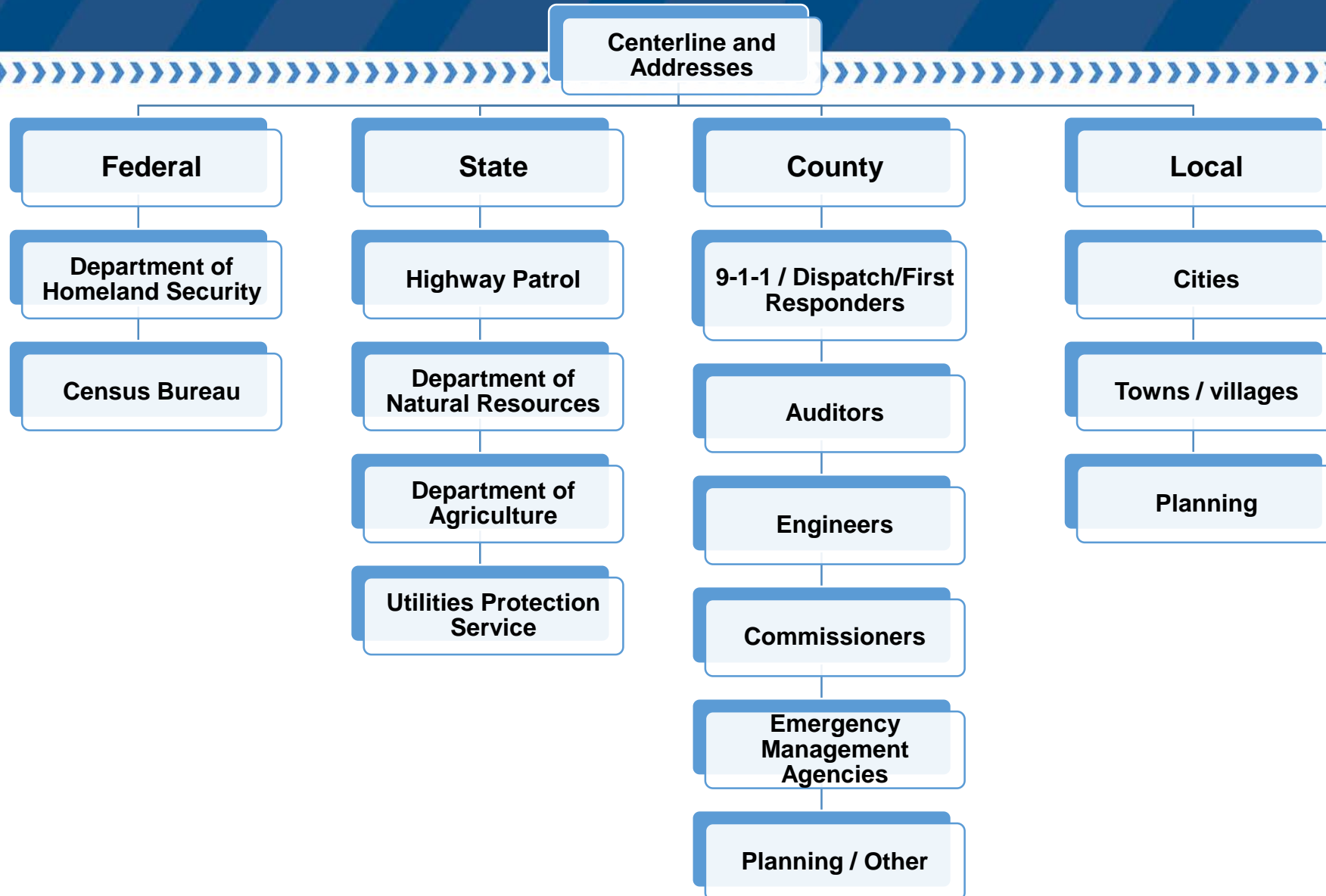
Where is GIS Data Used in NG9-1-1?

9-1-1 STANDARDS
& BEST PRACTICES
CONFERENCE

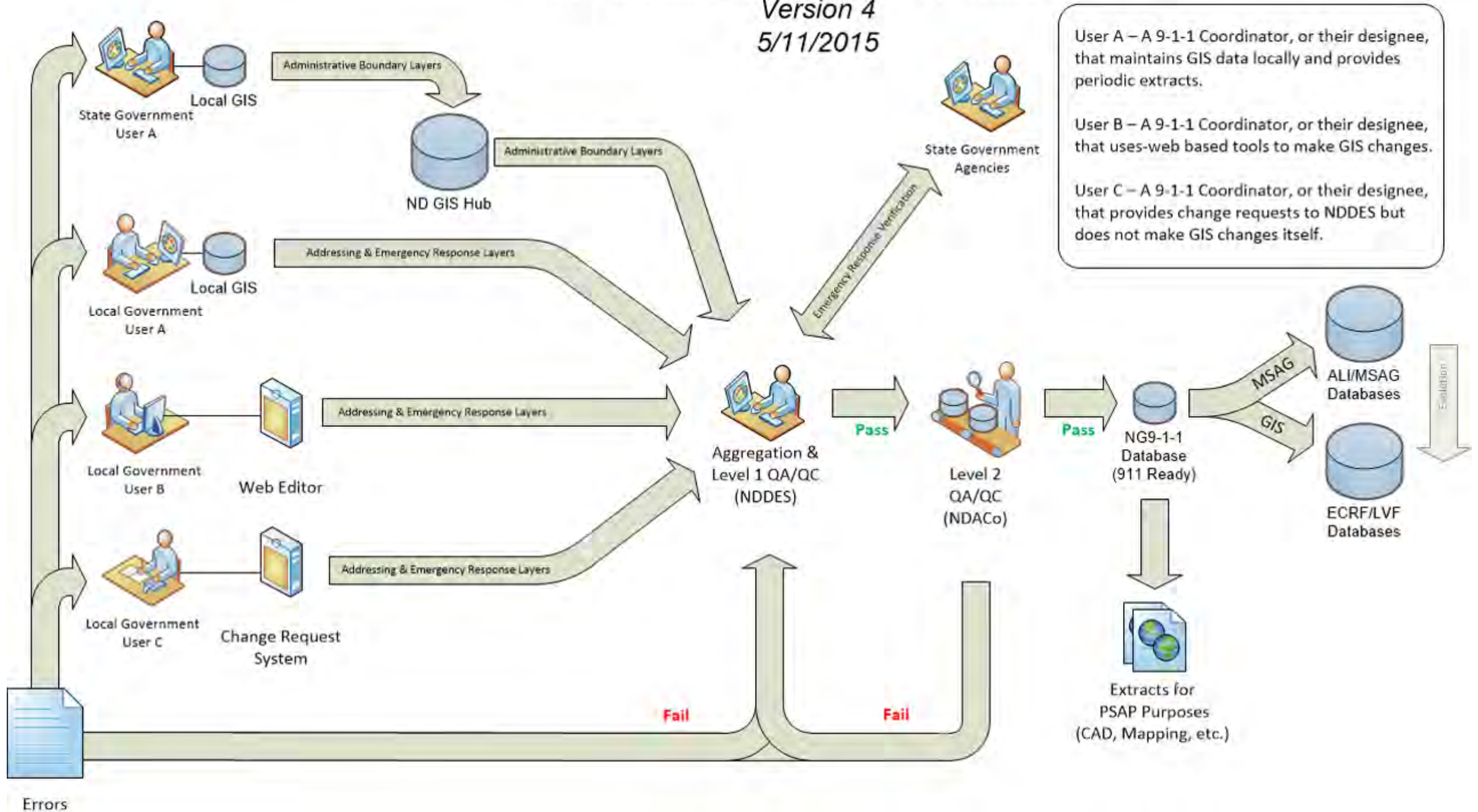


Data Sharing / Collaboration

9-1-1 STANDARDS
& BEST PRACTICES
CONFERENCE



Version 4
5/11/2015



PARTNERSHIPS

9-1-1 STANDARDS
& BEST PRACTICES
CONFERENCE

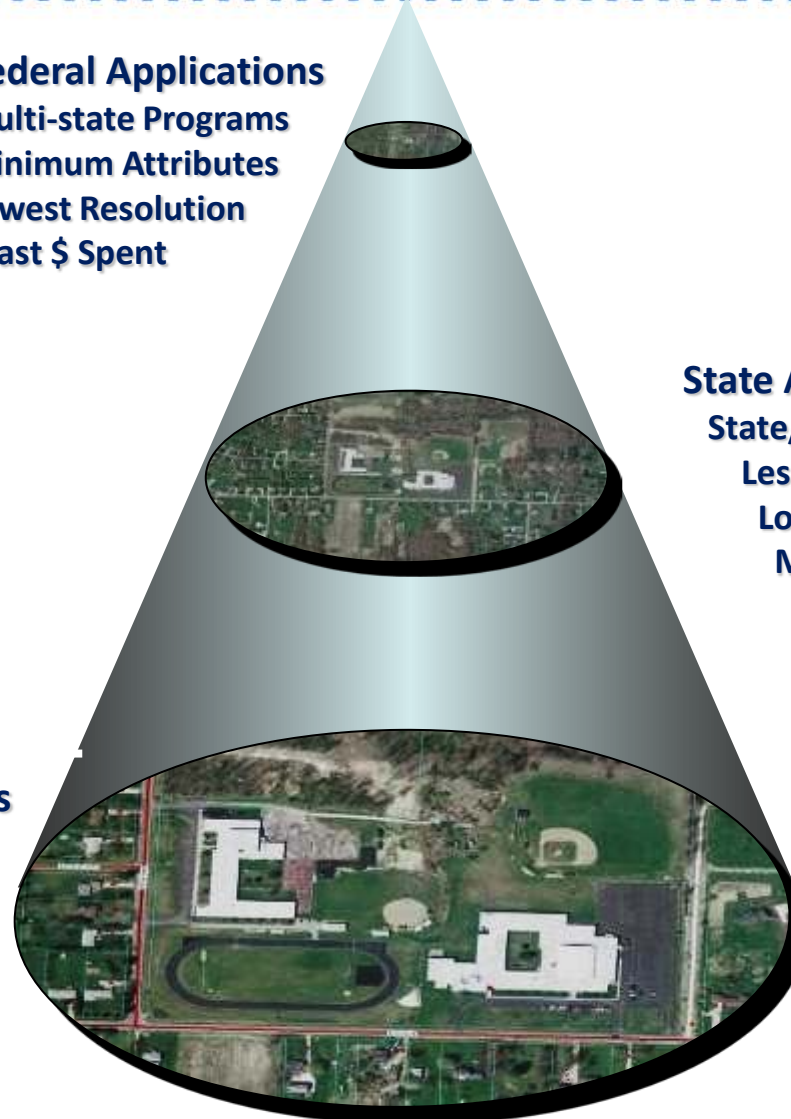
VERTICAL INTEGRATION

THE OHIO MODEL FOR SPATIAL DATA INFRASTRUCTURE DEVELOPMENT

Federal Applications
Multi-state Programs
Minimum Attributes
Lowest Resolution
Least \$ Spent

State Applications
State/Multi-County
Less Attributes
Low Resolution
More \$\$ Spent

Local Applications
County/Regional
More Attributes
Higher Resolution
Most \$\$\$\$ Spent



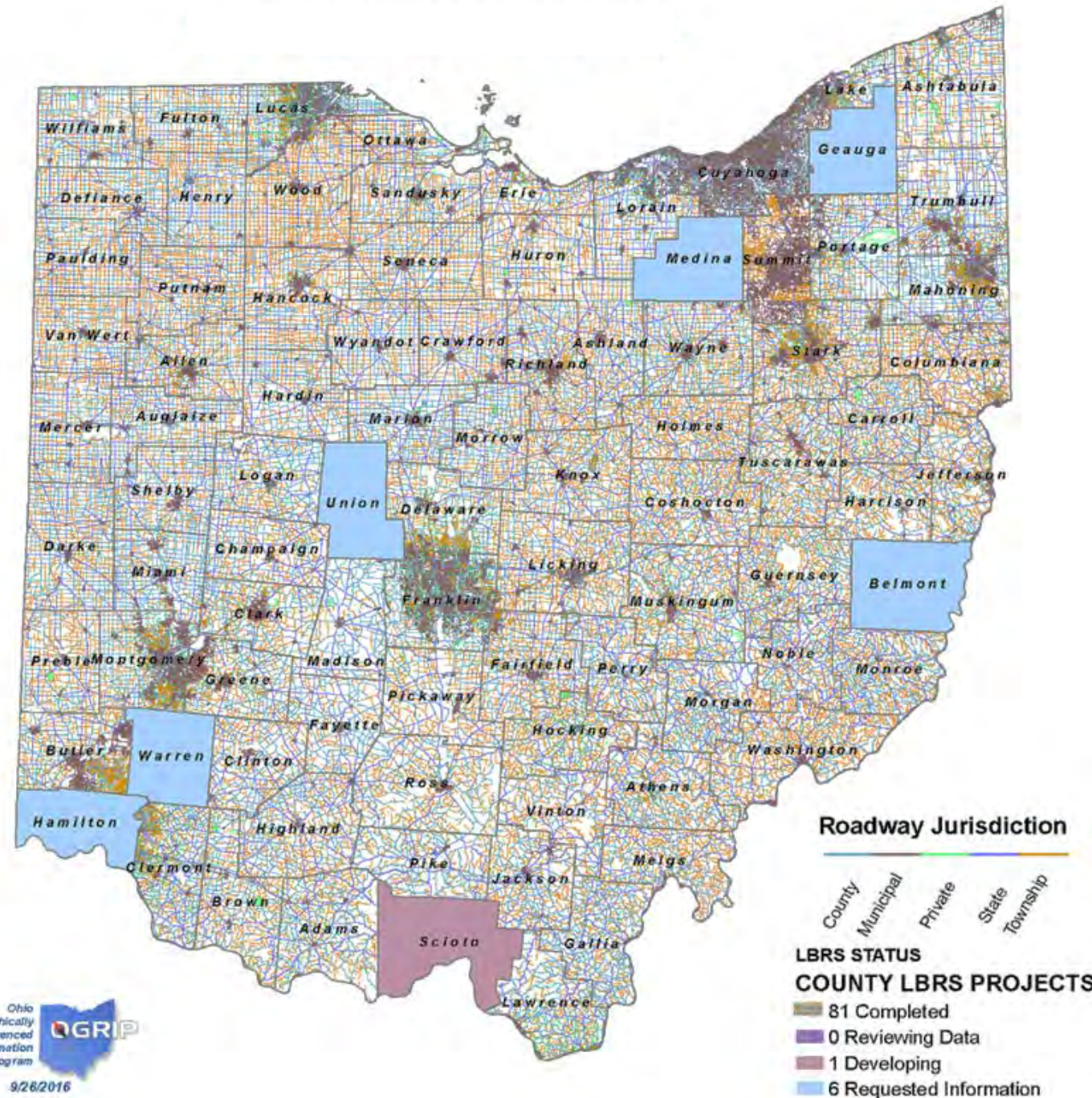
INTEGRATION

Ohio

Location Based
Response System

131,428
Centerline
Miles

4,500,000
Field Verified
Site
Addresses




COORDINATION

9-1-1 STANDARDS
& BEST PRACTICES
CONFERENCE

SPATIAL DATA ACCESS

[Home](#) [News](#) [Coordination](#) [Services/Data](#) [Projects/Initiatives](#) [Events](#) [Contact OGRIP](#)

Ohio Spatial Data Infrastructure - OSDI Downloads



Zoom to...

☒ County/City/Zip ☐ Coordinates

Click on a county, links to data will appear in the tabs below.

Zoom in to see the tiles, click them to see links to tile data.

Tools

Click the Select tool to select more than one tile. Drag your mouse to draw a rectangle across tiles on the map. Click the Clear Selection button to clear all selected tiles.

☐ OSIP II Data Availability
☐ OSIP Imagery
☒ Enhanced OSIP Tile

[OSIP I](#) [OSIP II](#) [Enhanced OSIP](#) [LBRS](#) [USGS](#) [Help](#)

LUCAS COUNTY

[Centerlines \(3.5 MB\)](#)
(6/30/2015)

[Address Points \(12.6 MB\)](#)
(7/1/2015)

[Intersections \(1.1 MB\)](#)
(6/30/2015)

[Landmarks \(1.2 MB\)](#)
(7/1/2015)

[Railroad Crossings \(24.5 KB\)](#)
(12/1/2011)



Ohio Geographically Referenced Information Program

[Home](#)[News](#)[Coordination](#)[Services/Data](#)[Projects/Initiatives](#)[Events](#)[Contact Us](#)

Ohio Spatial Data Infrastructure - REST Service Endpoints

Location Based Response System

Name	Type	Service URL
Adams County Location Based Response System	dynamic	MapServer , FeatureServer
Allen County Location Based Response System	dynamic	MapServer , FeatureServer
Ashtabula County Location Based Response System	dynamic	MapServer , FeatureServer
Athens County Location Based Response System	dynamic	MapServer , FeatureServer
Auglaize County Location Based Response System	dynamic	MapServer , FeatureServer
Brown County Location Based Response System	dynamic	MapServer , FeatureServer
Butler County Location Based Response System	dynamic	MapServer , FeatureServer
Carroll County Location Based Response System	dynamic	MapServer , FeatureServer
Champaign County Location Based Response System	dynamic	MapServer , FeatureServer
Clark County Location Based Response System	dynamic	MapServer , FeatureServer
Clinton County Location Based Response System	dynamic	MapServer , FeatureServer
Columbiana County Location Based Response System	dynamic	MapServer , FeatureServer
Crawford County Location Based Response System	dynamic	MapServer , FeatureServer
Cuyahoga County Location Based Response System	dynamic	MapServer , FeatureServer
Darke County Location Based Response System	dynamic	MapServer , FeatureServer
Defiance County Location Based Response System	dynamic	MapServer , FeatureServer
Delaware County Location Based Response System	dynamic	MapServer , FeatureServer
Erie County Location Based Response System	dynamic	MapServer , FeatureServer
Fairfield County Location Based Response System	dynamic	MapServer , FeatureServer

Search...



LBRS

☐ SEARCH WITHIN MAP

1-10 of 300 results

Relevance ▾



Gallia Centerlines LBRS (from OGRIP Open Data)

Shared by [ogrip_agol](#)

The State of Ohio Location Based Response System road centerlines depict center of pavement of public and private roads within participating Ohio Counties. Address Range data was developed from data collected by field observation of existing address locations at the time of collection. View Full Metadata

72 attributes | 3182 locations | [Download](#) [Star](#)

Harrison Address Points LBRS (from OGRIP Open Data)

Shared by [ogrip_agol](#)

The State of Ohio Location Based Response System address points depict the access points to addressable structures along public and private roads within participating Ohio Counties. Address point data was developed from data collected by field observation of existing address locations at the time of collection. View Full Metadata

47 attributes | 8291 locations | [Download](#) [Star](#)

Greene Centerlines LBRS (from OGRIP Open Data)

Shared by [ogrip_agol](#)

The State of Ohio Location Based Response System road centerlines depict center of pavement of public and private roads within participating Ohio Counties. Address Range data was developed from data collected by field observation of existing address locations at the time of collection. View Full Metadata

89 attributes | 11156 locations | [Download](#) [Star](#)

Adams Address Points LBRS (from OGRIP Open Data)

Shared by [ogrip_agol](#)

The State of Ohio Location Based Response System address points depict the access points to addressable structures along public and private roads within participating Ohio Counties. Address point data was developed from data collected by field observation of existing address locations at the time of collection. Link to Full Metadata

46 attributes | 14251 locations | [Download](#) [Star](#)

NA

NA

NA

NA

NA

NA

OPPORTUNITIES

9-1-1 STANDARDS
& BEST PRACTICES
CONFERENCE



**ENTERPRISE DATA
DEVELOPMENT**