

CERTIFICATE OF LOCATION OF GOVERNMENT CORNER

SOUTHEAST Corner of Section 7, Township 101 N., Range 30 W., 5TH P.M.

STATE OF MINNESOTA, County of MARTIN

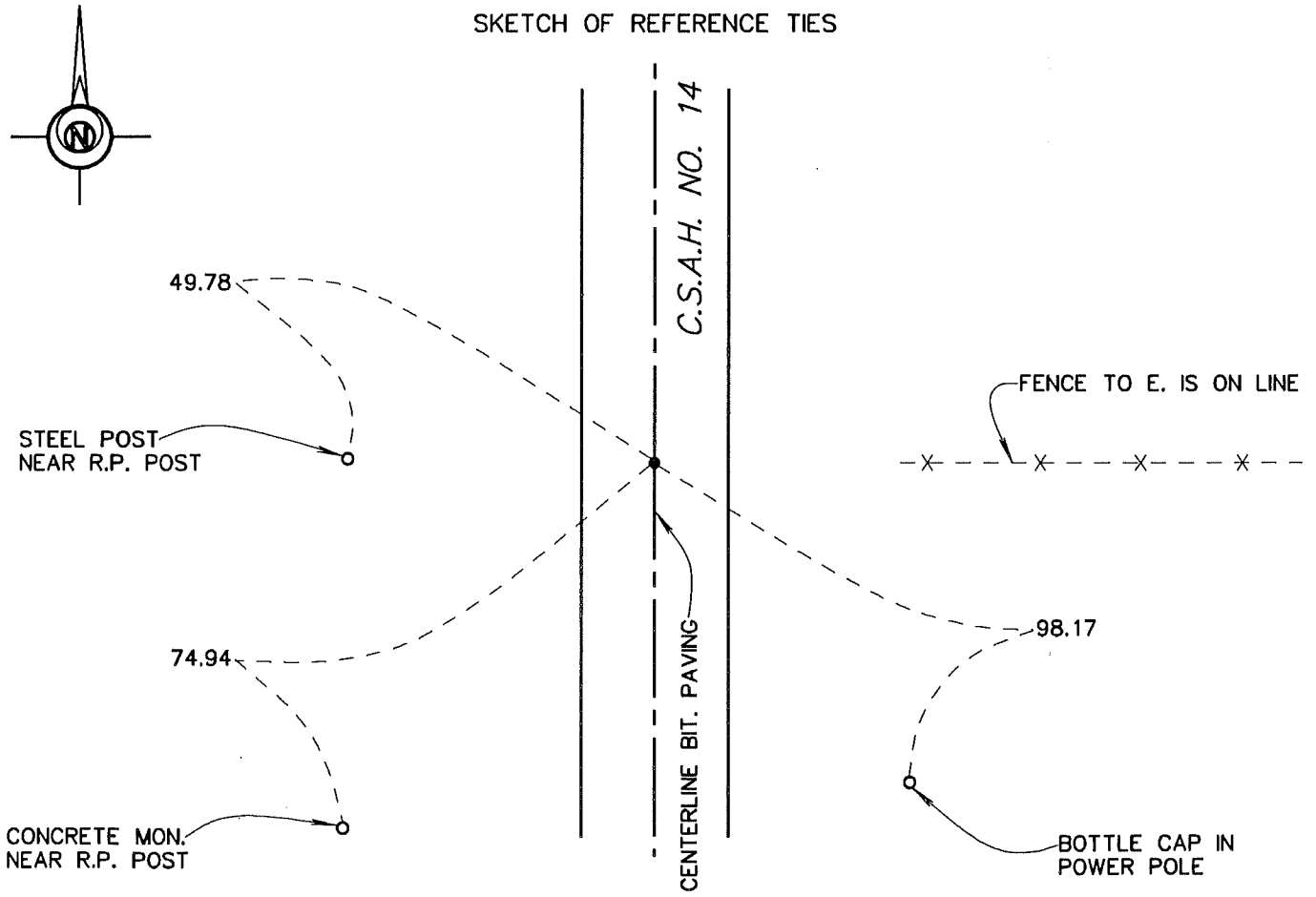
At the corner location shown on the sketch:

On 7-7-94 found a RAILROAD SPIKE IN THE BITUMINOUS PAVING (SURFACE).
DATE

left monument as found, lowered monument, removed monument (explain)

On 7-7-94 placed a REPLACED RAILROAD SPIKE WITH A 5/8" X 24" IRON MONUMENT
DATE
WITH AN ALUMINUM CAP (SURFACE).

SKETCH OF REFERENCE TIES



Statement of evidence relative to this corner location is on back of page.

I hereby certify that this document and the data contained herein was prepared by me or under my direct supervision.

John Madson 5/13/96
SIGNATURE DATE

Registration No. 13593

- Land Surveyor, Professional Engineer
- County Surveyor, County Engineer

OFFICE OF THE COUNTY RECORDER
County of MARTIN

I hereby certify that this document was filed in the Co. Recorders Office at _____ .M. on the _____ day of _____ A.D., 19____

County Recorder _____

By _____, Deputy

DOCUMENT NO. _____

**S.E. Cor., Sec. 7, T. 101 N., R. 30 W.
(Silver Lake Twp)**

Statement of Evidence

The corner was originally established during the Public Land Survey of 1854, by Oswald Brunius.

The Martin County Highway Dept. Tie Records indicate the corner was assumed, a 3/4" iron pipe was set (2" deep), with a R.R. Spk over pipe (surface). Tie - 56.45 NE = Hole (top), of 15" CSP

On July 7, 1994, I found a R.R. Spk in bit paving. Replaced R.R. Spk with a 5/8" x 24" iron rod with alum. cap

The History shown was obtained from the Martin County Highway Dept. Tie Records and existing Certificates of Location, only. Further History information may be obtained from the Martin County Recorder.