

# CERTIFICATE OF LOCATION OF GOVERNMENT CORNER

S 1/4 Corner of Section 36, Township 101 N, Range 30W, 5TH P.M.

STATE OF MINNESOTA, County of MARTIN

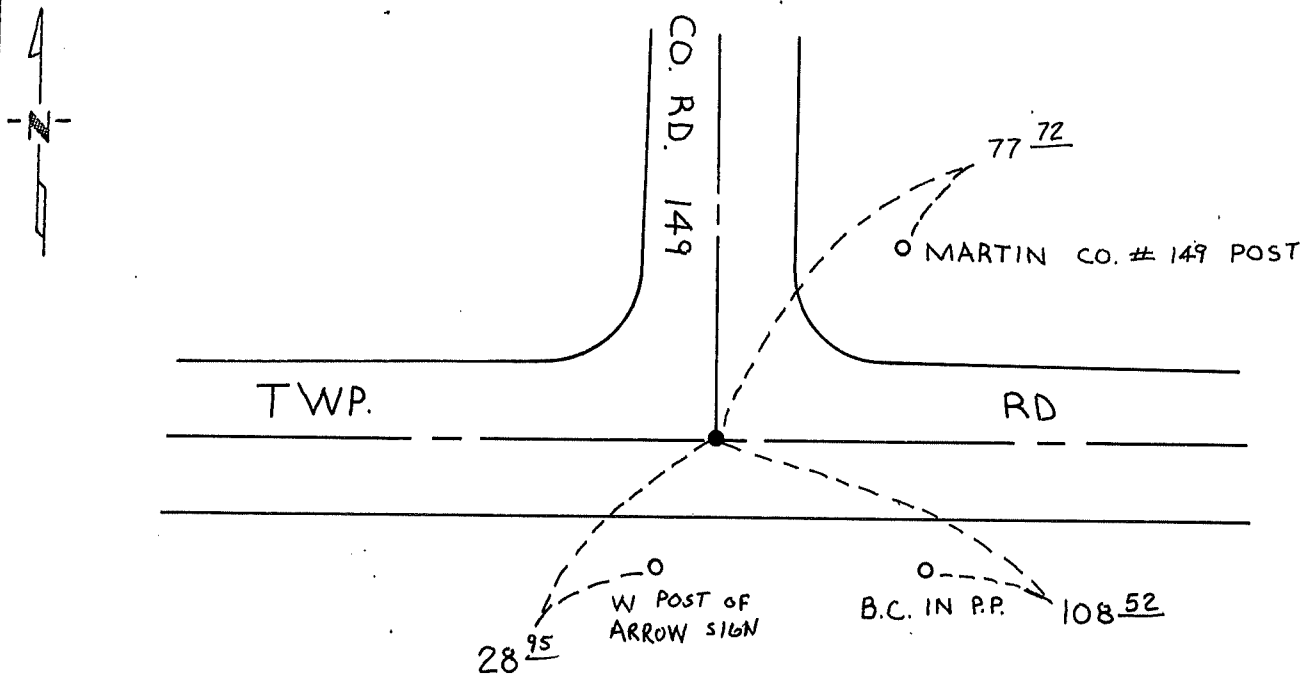
At the corner location shown on the sketch:

On 5-23-96 found a STONE WITH "+" 20" DEEP  
DATE

left monument as found,  lowered monument,  removed monument (explain)

On 5-23-96 placed a DRILLED HOLE IN STONE AND SET 5/8" X 24"  
DATE I.R. WITH ALUMINUM CAP OVER STONE 4" DEEP

### SKETCH OF REFERENCE TIES



Statement of evidence relative to this corner location is on back of page.

I hereby certify that this document and the data contained herein was prepared by me or under my direct supervision.

\_\_\_\_\_  
SIGNATURE DATE

Registration No. \_\_\_\_\_

- Land Surveyor,  Professional Engineer
- County Surveyor,  County Engineer

OFFICE OF THE REGISTER OF DEEDS

County of \_\_\_\_\_

I hereby certify that this document was filed in the Reg. of Deeds office at \_\_\_\_\_ .M. on the \_\_\_\_\_ day of \_\_\_\_\_ A.D., 19 \_\_\_\_\_

Register of Deeds \_\_\_\_\_

By \_\_\_\_\_, Deputy

DOCUMENT NO. \_\_\_\_\_

**Statement of Evidence:**

Previous ties from the Martin County Highway Dept. described the corner as a stone with "+" (12" deep) with a 3/4" steel rod over stone "+".

The only remaining tie is 108.4 S.E. = Power Pole.