

CERTIFICATE OF LOCATION OF GOVERNMENT CORNER

Center Quarter Corner of Section 32, Township 101N., Range 30W., 5th P.M.

STATE OF MINNESOTA, County of Martin

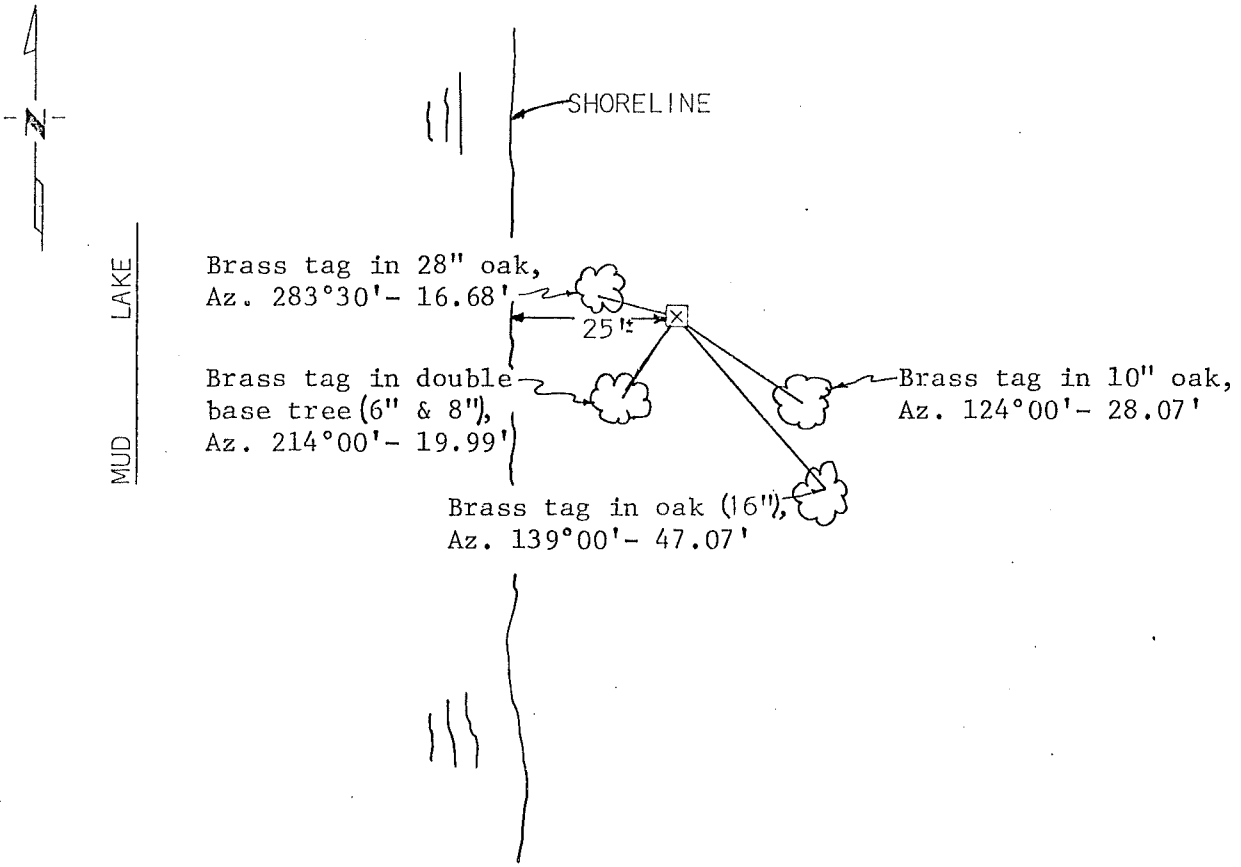
At the corner location shown on the sketch.

On 9-1-81 found a granite stone with "X" per Co. record; corner is
DATE
at ground surface with steel fence post along side.

left monument as found, lowered monument, removed monument (explain)

On _____ placed a _____
DATE

SKETCH OF REFERENCE TIES



I hereby certify that this document and the data contained herein was prepared by me or under my direct supervision.

[Signature] 12/28/81
SIGNATURE DATE

Registration No. 12967

Land Surveyor, Professional Engineer

County Surveyor, County Engineer

OFFICE OF THE COUNTY RECORDER

County of Martin

I hereby certify that this document was filed in the Co. Recorders office at 11:00 A.M. on the 28th day of January A.D., 19 82

County Recorder [Signature]

By _____, Deputy

DOCUMENT NO. 285604 MICROFILMED

CERTIFICATE OF LOCATION OF GOVERNMENT CORNER

MEANDER CORNER (PT. 6)

FOR SOUTHEAST Corner of Section 32, Township 101 N., Range 30 W., 5TH P.M.

STATE OF MINNESOTA, County of MARTIN

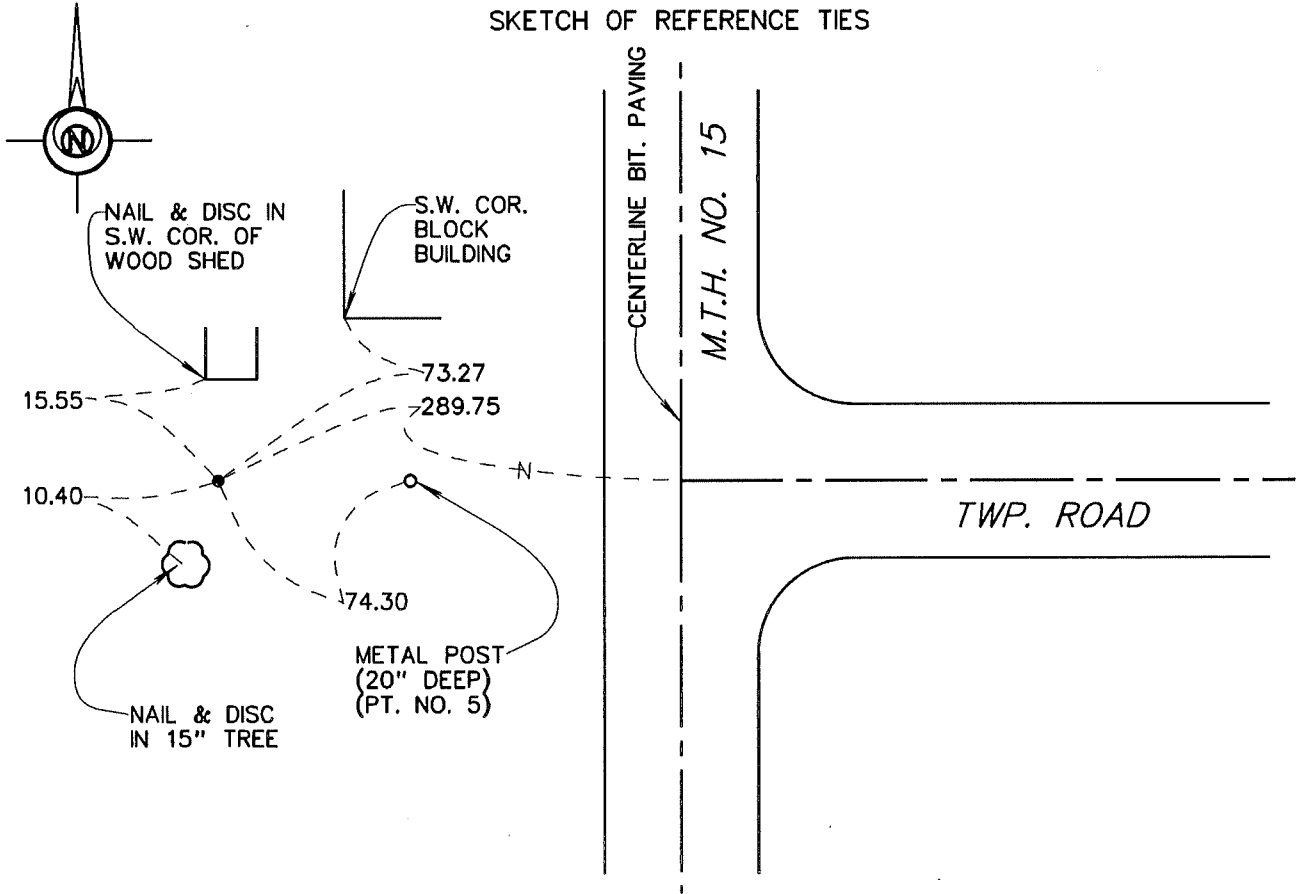
At the corner location shown on the sketch:

On 7-15-94 found a STONE WITH "+" WITH METAL ON S. EDGE (30" DEEP).
DATE

left monument as found, lowered monument, removed monument (explain)

On 7-15-94 placed a SET A 5/8" X 24" IRON MONUMENT MONUMENT WITH AN
DATE
ALUMINUM CAP OVER THE STONE "+" (SURFACE).

SKETCH OF REFERENCE TIES



Statement of evidence relative to this corner location is on back of page.

I hereby certify that this document and the data contained herein was prepared by me or under my direct supervision.

John Maden 5/13/96
SIGNATURE DATE

Registration No. 13593

- Land Surveyor, Professional Engineer
- County Surveyor, County Engineer

OFFICE OF THE COUNTY RECORDER
County of MARTIN

I hereby certify that this document was filed in the Co. Recorders Office at _____ M. on the _____ day of _____ A.D., 19____.

County Recorder _____
By _____, Deputy
DOCUMENT NO. _____

**S.E. (Meander) Cor., Sec. 32, T. 101 N., R. 30 W.
(Silver Lake Twp)**

Statement of Evidence

The corner was originally established during the Public Land Survey of 1854, by John Everett.

The Martin County Highway Dept. Tie Records indicate the corner was a stone "+". Ties - 46.2 E. of SE Cor., Sec. 32, 26.80 WNW = 48" Cottonwood, 30.05 NE = 12" Cedar

On July 27, 1994, I found a stone "+" with metal on S. side (30" deep). Set a 5/8" x 30" iron rod with alum. cap over stone (surface).

The History shown was obtained from the Martin County Highway Dept. Tie Records and existing Certificates of Location, only. Further History information may be obtained from the Martin County Recorder.