

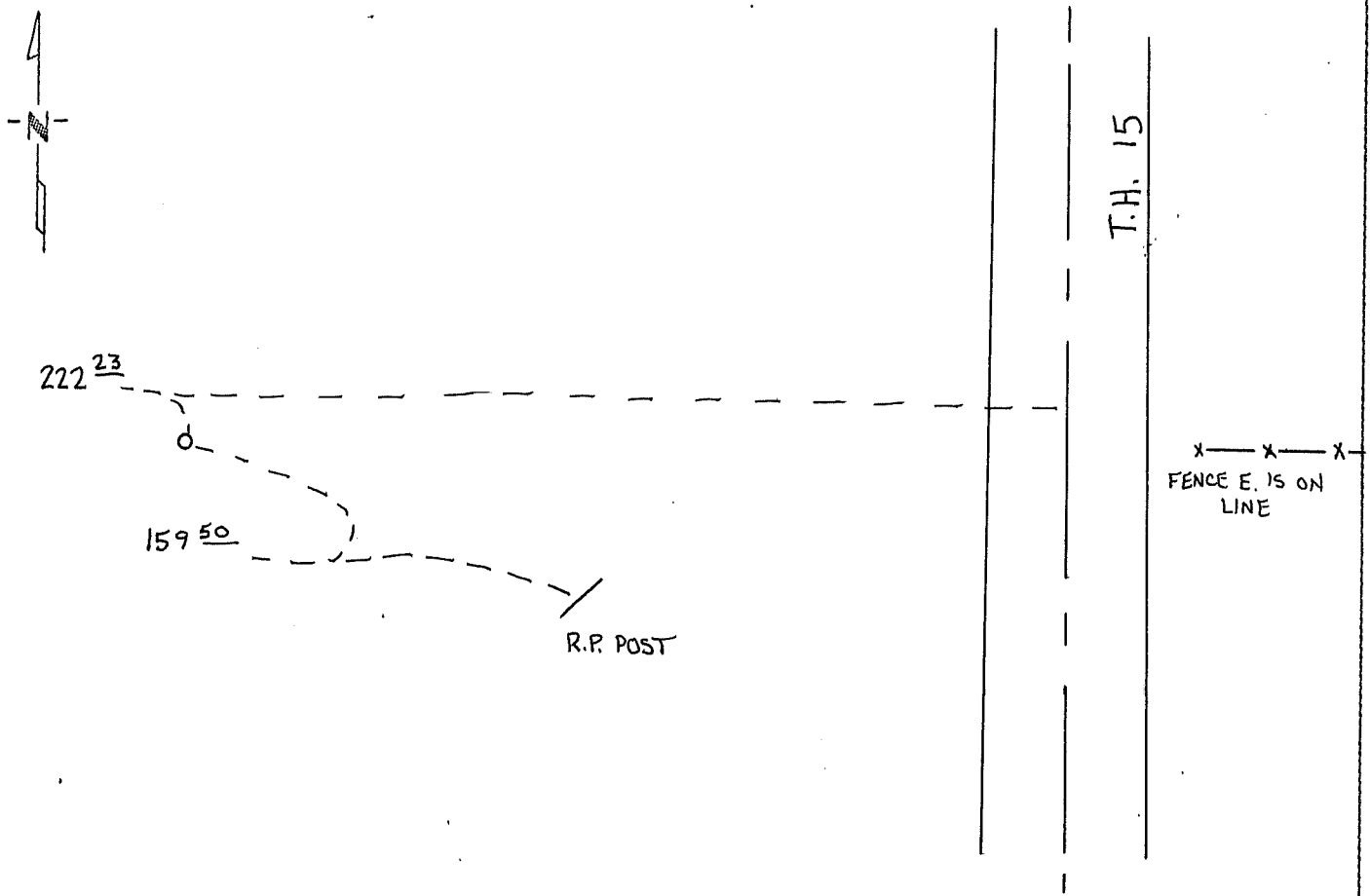
# CERTIFICATE OF LOCATION OF GOVERNMENT CORNER

E 1/4 Corner of Section 32, Township 101 N, Range 30 W, 5 TH P.M.  
STATE OF MINNESOTA, County of MARTIN

At the corner location shown on the sketch:

- On 5-29-96 found a 1/2" I.R. WITH R.L.S. CAP 12967 (14" DEEP) OVER A STONE  
DATE  
(38" DEEP)  
 left monument as found,  lowered monument,  removed monument (explain)
- On 5-29-96 placed a 5/8" x 24" I.R WITH ALUMINUM CAP IN POSITION OF 1/2" I.R.  
DATE  
+ SET 1/2" I.R. NEXT TO THE 5/8" I.R. (16" DEEP)

### SKETCH OF REFERENCE TIES



Statement of evidence relative to this corner location is on back of page.

I hereby certify that this document and the data contained herein was prepared by me or under my direct supervision.

\_\_\_\_\_  
SIGNATURE DATE

Registration No. \_\_\_\_\_

- Land Surveyor,  Professional Engineer
- County Surveyor,  County Engineer

OFFICE OF THE REGISTER OF DEEDS  
County of \_\_\_\_\_

I hereby certify that this document was filed in the Reg. of Deeds office at \_\_\_\_\_ .M. on the \_\_\_\_\_ day of \_\_\_\_\_ A.D., 19 \_\_\_\_\_

Register of Deeds \_\_\_\_\_

By \_\_\_\_\_, Deputy

DOCUMENT NO. \_\_\_\_\_