

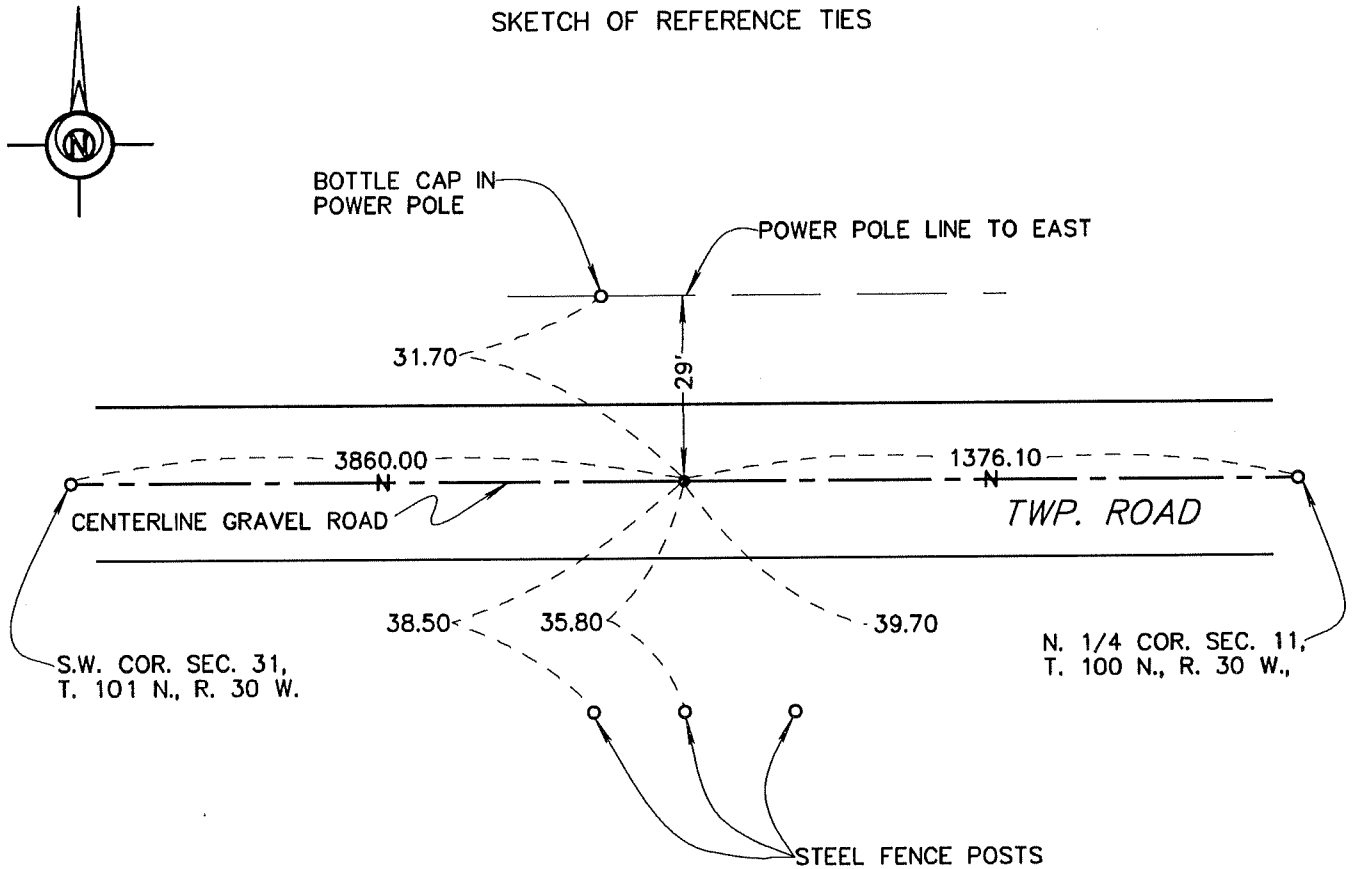
# CERTIFICATE OF LOCATION OF GOVERNMENT CORNER

SOUTH QUARTER Corner of Section 31, Township 101 N., Range 30 W., 5TH P.M.  
 STATE OF MINNESOTA, County of MARTIN

At the corner location shown on the sketch:

- On 8-25-95 found a 10" X 8" X 6" STONE (24" DEEP).  
DATE
- left monument as found,  lowered monument,  removed monument (explain)
- On 8-25-95 placed a 3/4 O.D. X 24" I.P. (30" DEEP) & SET A 5/8" IRON MONUMENT  
DATE  
WITH AN ALUMINUM CAP OVER I.P. (6" DEEP).

SKETCH OF REFERENCE TIES



Statement of evidence relative to this corner location is on back of page.

I hereby certify that this document and the data contained herein was prepared by me or under my direct supervision.

John Madson 5/13/96  
SIGNATURE DATE

Registration No. 13593

- Land Surveyor,  Professional Engineer
- County Surveyor,  County Engineer

OFFICE OF THE COUNTY RECORDER

County of MARTIN

I hereby certify that this document was filed in the Co. Recorders Office at \_\_\_\_\_ M. on the \_\_\_\_\_ day of \_\_\_\_\_ A.D., 19\_\_\_\_.

County Recorder \_\_\_\_\_

By \_\_\_\_\_, Deputy

DOCUMENT NO. \_\_\_\_\_

S. 1/4 Cor., Sec. 31, T. 101 N., R. 30 W.  
(Silver Lake Twp)

**Statement of Evidence**

The corner was originally established during the Public Land Survey of 1854, by John Everett.

The Martin County Highway Dept. Tie Records provided no information pertaining to this corner.

On Aug. 25, 1995, I found a 10x8x6 stone, near remains of barb wire leading all 4 directions, while digging for corner with a back hoe. Also dug two additional holes, within a 50' of the area and found no other evidence of corner. Removed stone & set a 3/4" x 24" iron pipe as the corner (30" deep), set a 5/8" x 24" iron rod with alum. cap over 3/4" pipe (6" deep)

The History shown was obtained from the Martin County Highway Dept. Tie Records and existing Certificates of Location, only. Further History information may be obtained from the Martin County Recorder.