

CERTIFICATE OF LOCATION OF GOVERNMENT CORNER

SOUTHEAST Corner of Section 29, Township 101 N., Range 30 W., 5TH P.M.

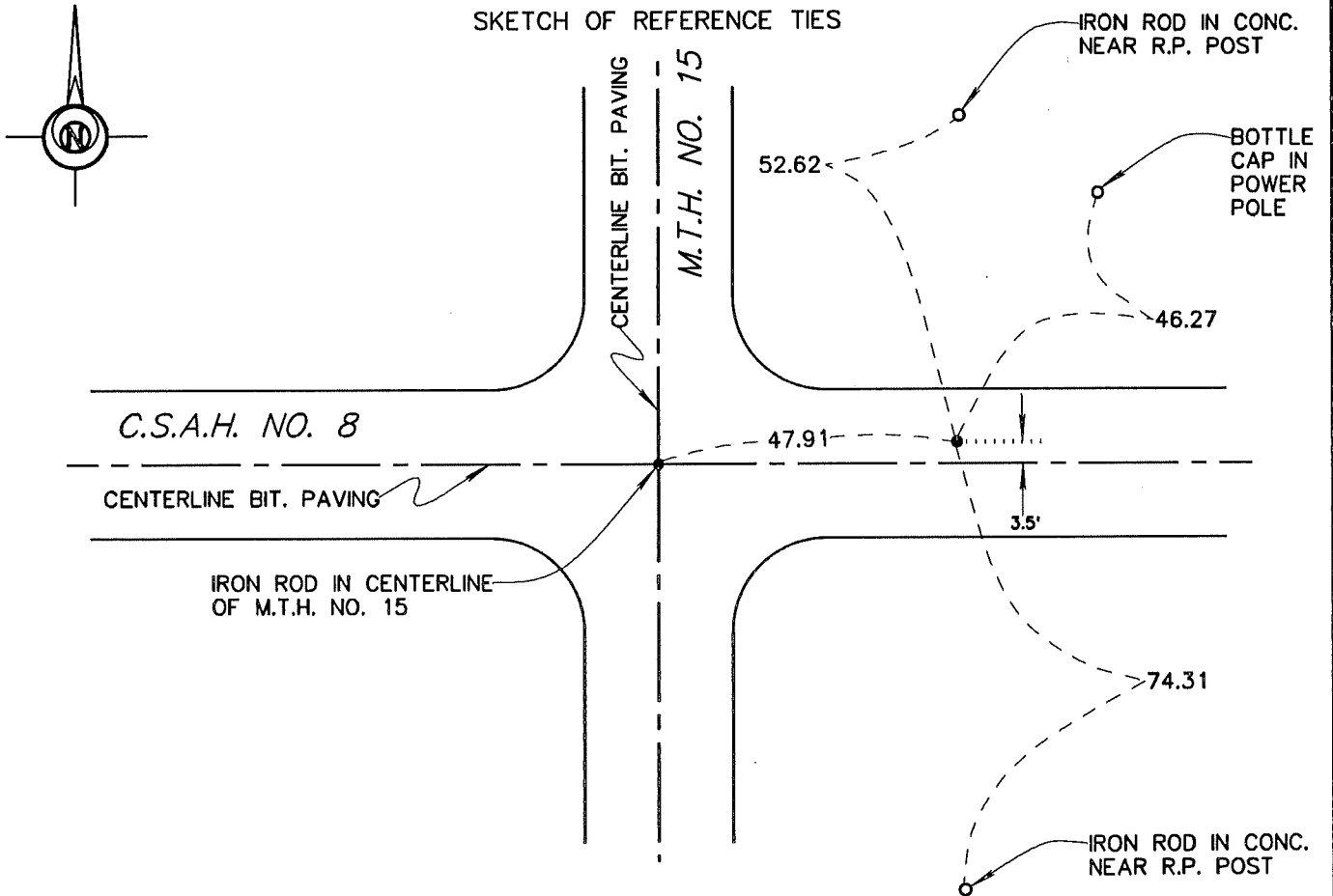
STATE OF MINNESOTA, County of MARTIN

At the corner location shown on the sketch:

On 6-14-94 found a 5/8" IRON ROD IN CONCRETE (13" DEEP).
DATE

left monument as found, lowered monument, removed monument (explain)

On 6-14-94 placed a 5/8" X 12" IRON MONUMENT WITH AN ALUMINUM CAP OVER THE
DATE
THE FOUND ROD (1" DEEP).



Statement of evidence relative to this corner location is on back of page.

I hereby certify that this document and the data contained herein was prepared by me or under my direct supervision.

John Madson 5/13/96
SIGNATURE DATE

Registration No. 13593

- Land Surveyor, Professional Engineer
- County Surveyor, County Engineer

OFFICE OF THE COUNTY RECORDER

County of MARTIN

I hereby certify that this document was filed in the Co. Recorders Office at _____ M. on the _____ day of _____ A.D., 19____

County Recorder _____

By _____, Deputy

DOCUMENT NO. _____

**S.E. Cor. Sec. 29, T. 101 N., R. 30 W.
(Silver Lake Twp)**

Statement of Evidence

The corner was originally established during the Public Land Survey of 1854, by Oswald Brunius.

According to the recorded Certificate of Location, Doc. No. 223698, 265602
Date, May 7, 1964, the corner was a stone "+", a conc. mon. was set over stone. On Aug. 19, 1981, the conc. mon. was found (11" deep)

On June 14, 1995, I found a conc. mon. (13" deep), set a 5/8" x 12" iron rod with alum. cap over mon. (1" deep)

The History shown was obtained from the Martin County Highway Dept. Tie Records and existing Certificates of Location, only. Further History information may be obtained from the Martin County Recorders Office.