

CERTIFICATE OF LOCATION OF GOVERNMENT CORNER

SOUTHEAST Corner of Section 26, Township 101 N., Range 30 W., 5TH P.M.

STATE OF MINNESOTA, County of MARTIN

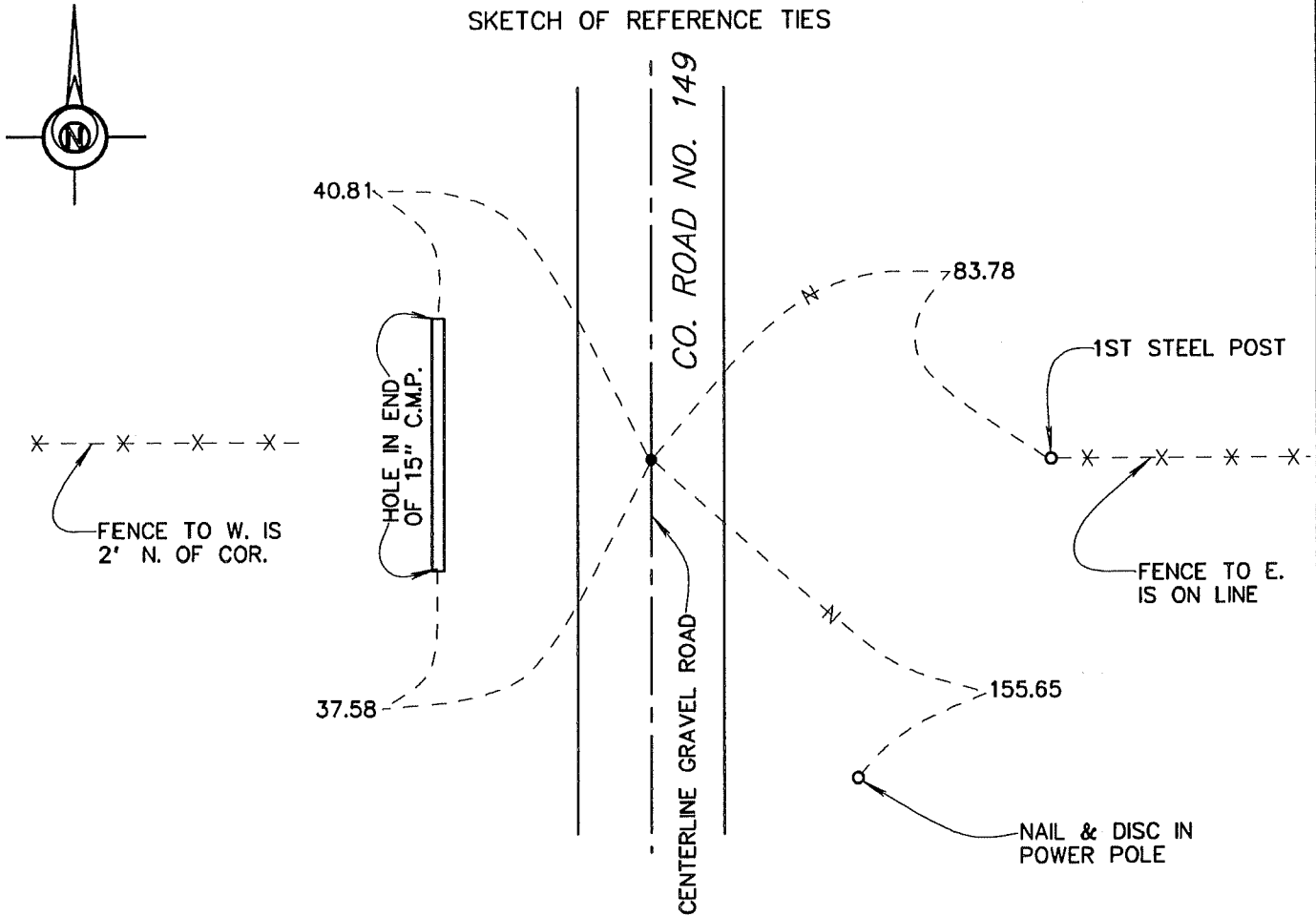
At the corner location shown on the sketch:

On 7-8-94 found a CONCRETE MONUMENT (15" DEEP).
DATE

left monument as found, lowered monument, removed monument (explain)

On 7-8-94 placed a REPLACED CONCRETE MONUMENT WITH A 5/8" X 30" IRON
DATE
MONUMENT WITH AN ALUMINUM CAP (4" DEEP).

SKETCH OF REFERENCE TIES



Statement of evidence relative to this corner location is on back of page.

I hereby certify that this document and the data contained herein was prepared by me or under my direct supervision.

John Madson 5/13/96
SIGNATURE DATE

Registration No. 13593

- Land Surveyor, Professional Engineer
- County Surveyor, County Engineer

OFFICE OF THE COUNTY RECORDER
County of MARTIN

I hereby certify that this document was filed in the Co. Recorders Office at _____ M. on the _____ day of _____ A.D., 19____.

County Recorder _____

By _____, Deputy

DOCUMENT NO. _____

**S.E. Cor. Sec. 26, T. 101 N., R. 30 W.
(Silver Lake Twp)**

Statement of Evidence

The corner was originally established during the Public Land Survey of 1854, by Oswald Brunius.

According to the recorded Certificate of Location, Doc. No. 259960 Date, Oct. 27, 1978, the corner was a sq. iron shaft (9" deep), a Martin County Highway Dept. Marker was set over shaft.

The Martin county Highway Dept. tie records indicate the corner was a stone "+", with a conc. mon. over stone (7" deep)

On July 7, 1994, I found a conc. mon. (15" deep). Replaced mon. with a 5/8" x 30" iron rod with alum. cap (4" deep)

The History shown was obtained from the Martin County Highway Dept. Tie Records and existing Certificates of Location, only. Further History information may be obtained from the Martin County Records Office.