

CERTIFICATE OF LOCATION OF GOVERNMENT CORNER

Center _____ Corner of Section 24, Township 101N, Range 30W, 5th P.M.

STATE OF MINNESOTA, County of Martin

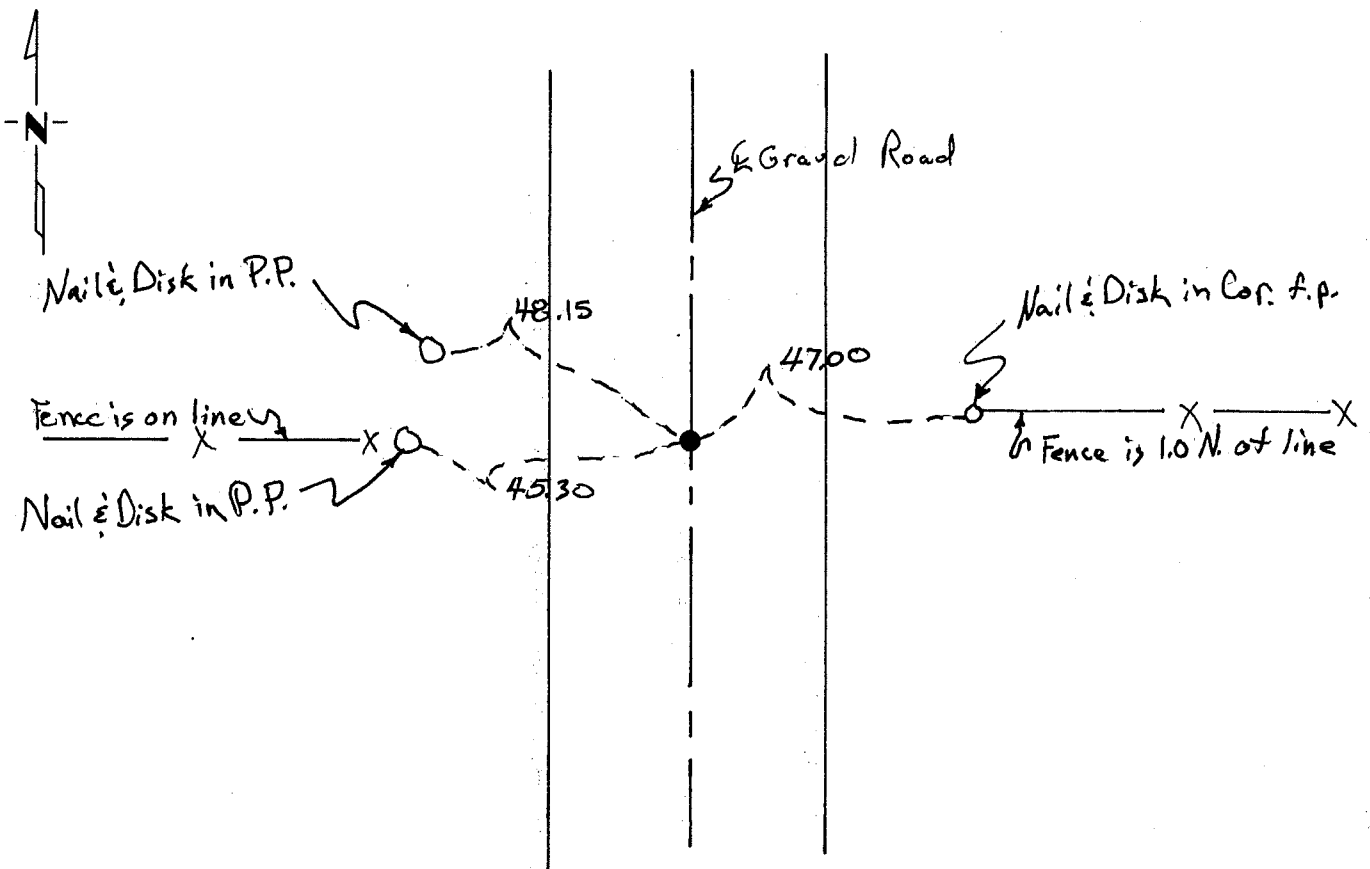
At the corner location shown on the sketch:

On 9/13/82 found a $\frac{1}{2}$ " pipe (3" deep) in agreement with previous ties
DATE

left monument as found, lowered monument, removed monument (explain)

On _____ placed a _____
DATE

SKETCH OF REFERENCE TIES



Statement of evidence relative to this corner location is on back of page.

I hereby certify that this document and the data contained herein was prepared by me or under my direct supervision.

SIGNATURE DATE

Registration No. 13593

Land Surveyor, Professional Engineer

County Surveyor, County Engineer

OFFICE OF THE COUNTY RECORDER

County of Martin

I hereby certify that this document was filed in the Co. Recorders office at _____ .M. on the _____ day of _____ A.D., 19 _____

COUNTY RECORDER _____

By _____, Deputy

DOCUMENT NO. _____

Statement of Evidence:

The corner was identified as a 2" x 2" hub (37" deep) with a 3/4" steel rod over hub by the Martin County Highway Department in May of 1957. The remaining ties being fence west is on line, fence east is 12" North.

One 9/13/82, I found a 1/2" pipe (3" deep) at corner.