

CERTIFICATE OF LOCATION OF GOVERNMENT CORNER

SILVER LAKE TWP.

SOUTH QUARTER Corner of Section 16, Township 101N, Range 30W, 5th P.M.

STATE OF MINNESOTA, County of MARTIN

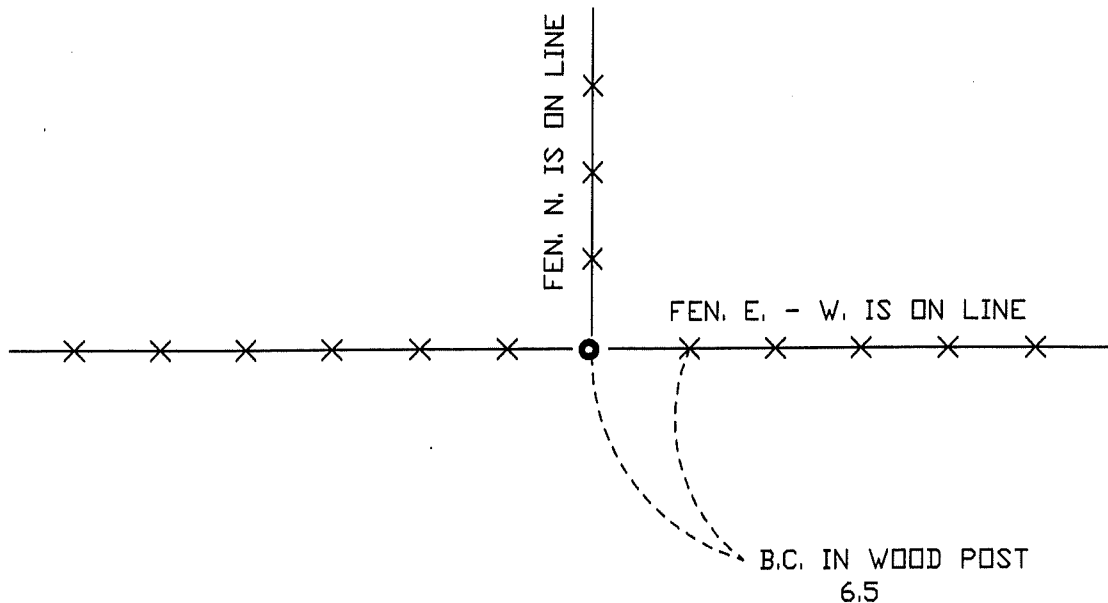
At the corner location shown on the sketch:

On 5-30-1995 found a LARGE STONE WITH FAINT "x" 14" DEEP ON S. EDGE
DATE
OF ROTTED OFF WOOD POST

left monument as found, lowered monument, removed monument (explain)

On 5-30-1995 Placed a 2 ANGLE IRON ON N.W. EDGE OF STONE AND SET 3/4"
DATE
IRON PIPE OVER STONE "x"

SKETCH OF REFERENCE TIES



Statement of evidence relative to this corner location is on back of page.

I hereby certify that this document and the data contained herein was prepared by me or under my direct supervision.

SIGNATURE DATE

Registration No. _____

- Land Surveyor, Professional Engineer
- County Surveyor, County Engineer

OFFICE OF THE REGISTER OF DEEDS

County of _____

I hereby certify that this document was filed in the Reg. of Deeds office at

_____, M. on the

_____ day of _____ A.D., 19____

Register of Deeds _____

By _____, Deputy

DOCUMENT NO. _____