

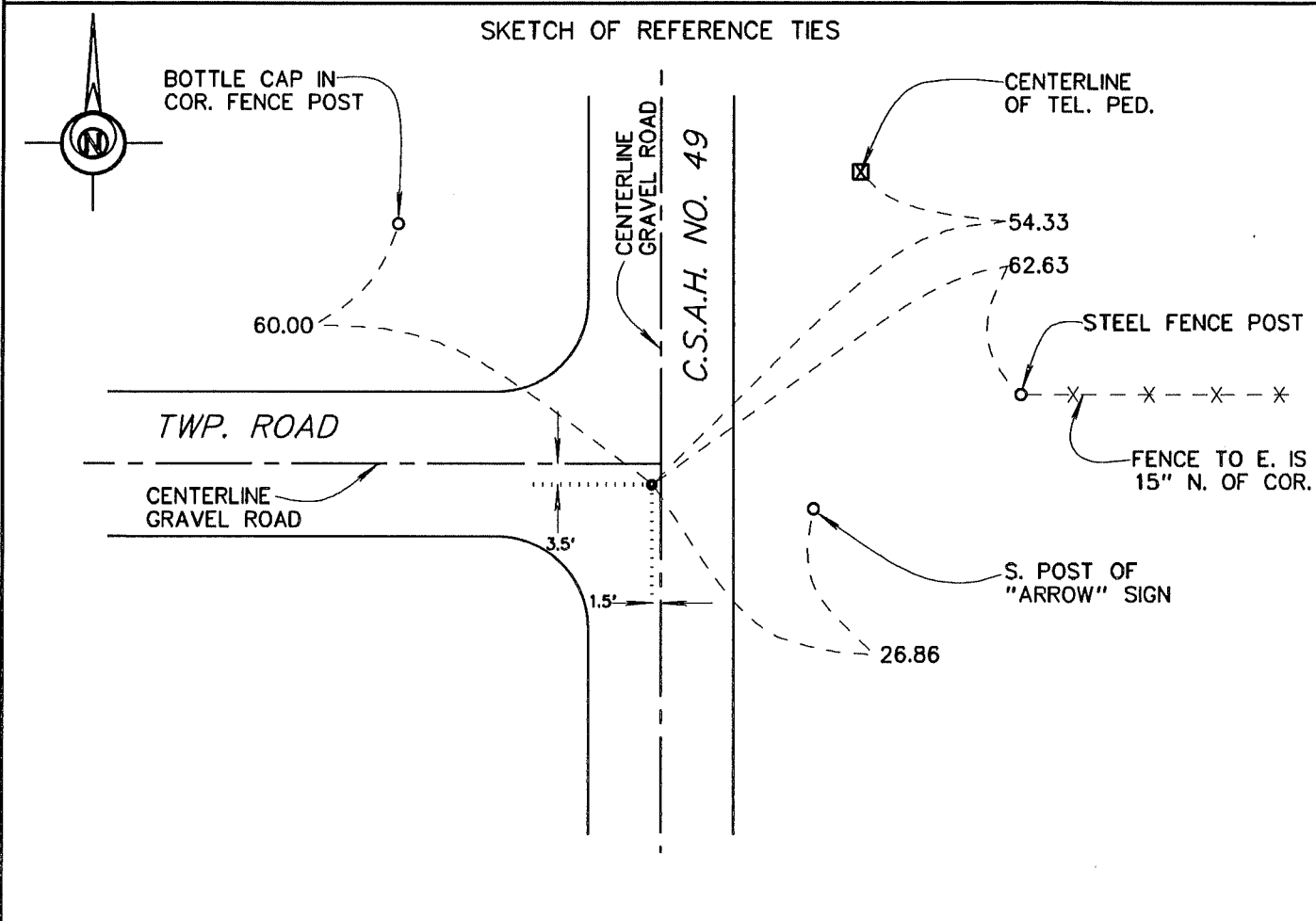
CERTIFICATE OF LOCATION OF GOVERNMENT CORNER

SOUTH QUARTER Corner of Section 13, Township 101 N., Range 30 W., 5TH P.M.

STATE OF MINNESOTA, County of MARTIN

At the corner location shown on the sketch:

- On 7-8-94 found a 3/4" X 18" IRON PIPE (7" DEEP).
DATE
- left monument as found, lowered monument, removed monument (explain)
- On 7-8-94 placed a REPLACED IRON PIPE WITH A 5/8" X 30" IRON MONUMENT
DATE
WITH AN ALUMINUM CAP (4" DEEP).



Statement of evidence relative to this corner location is on back of page.

I hereby certify that this document and the data contained herein was prepared by me or under my direct supervision.

John Madson 5/13/96
SIGNATURE DATE

Registration No. 13593

Land Surveyor, Professional Engineer
 County Surveyor, County Engineer

OFFICE OF THE COUNTY RECORDER
County of MARTIN

I hereby certify that this document was filed in the Co. Recorders Office at _____ M. on the _____ day of _____ A.D., 19____.

County Recorder _____
By _____, Deputy

DOCUMENT NO. _____

S. 1/4 Cor., Sec. 13, T. 101 N., R. 30 W.
(Silver Lake Twp)

Statement of Evidence

The corner was originally established during the Public Land Survey of 1854, by Oswald Brunius.

The Martin County Highway Dept. Tie Records indicate the corner was a 2 x 2 hub (18" deep), with a 3/4" steel rod over hub. Ties - 47.5 ENE = C.F.P., 65.7 SE = 3rd steel F.P.

On July 8, 1994, I found a 3/4" x 18" iron pipe (7" deep). Replaced pipe with a 5/8" x 30" iron rod with alum. cap (4" deep)

The History shown was obtained from the Martin County Highway Dept. Tie Records and existing Certificates of Location, only. Further History information may be obtained from the Martin County Recorder.