

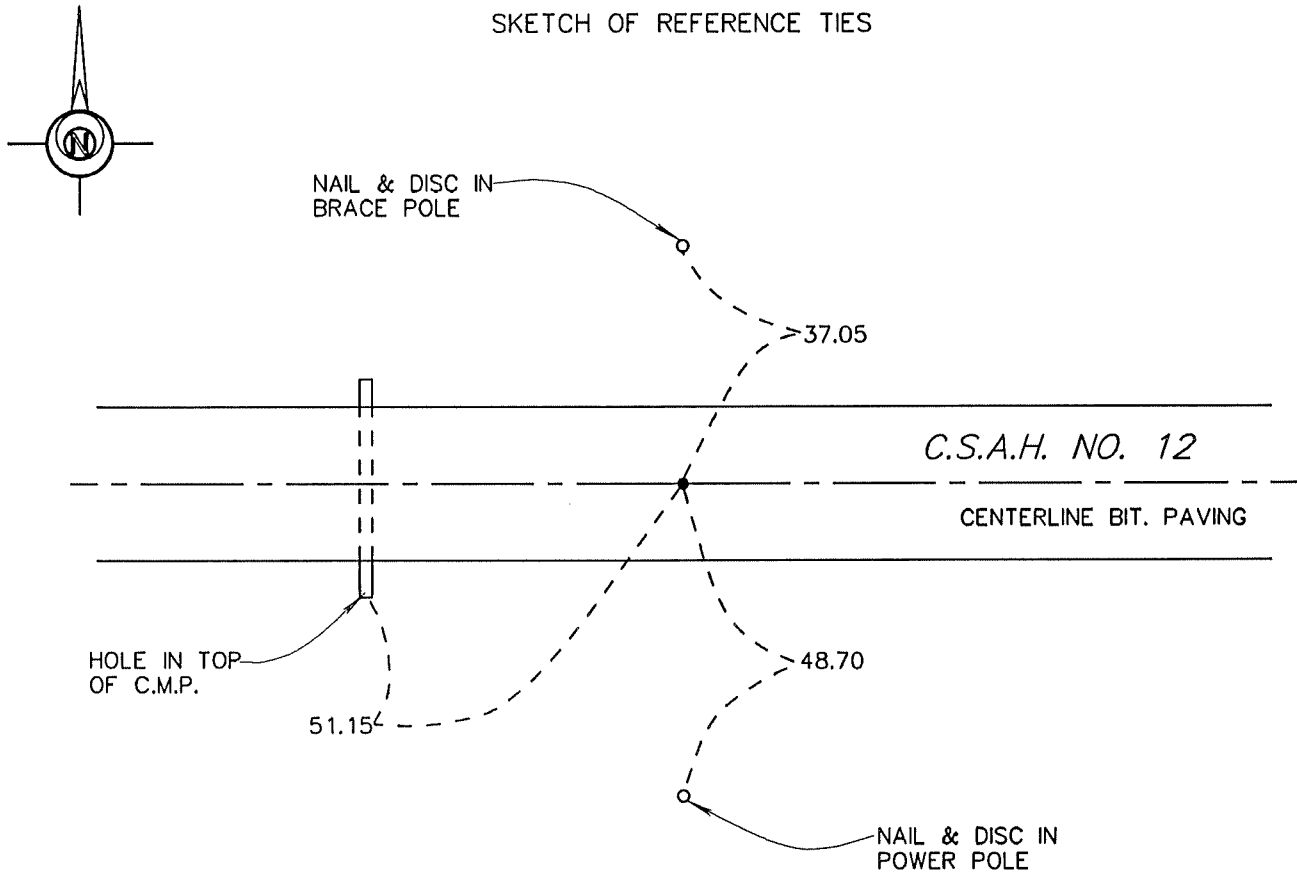
# CERTIFICATE OF LOCATION OF GOVERNMENT CORNER

SOUTHEAST Corner of Section 11, Township 101 N., Range 30 W., 5TH P.M.  
STATE OF MINNESOTA, County of MARTIN

At the corner location shown on the sketch:

- On 8-3-93 found a RAILROAD SPIKE IN THE BITUMINOUS PAVING (SURFACE)  
DATE
- left monument as found,  lowered monument,  removed monument (explain)
- On \_\_\_\_\_ placed a \_\_\_\_\_  
DATE

SKETCH OF REFERENCE TIES



Statement of evidence relative to this corner location is on back of page.

I hereby certify that this document and the data contained herein was prepared by me or under my direct supervision.

John Madson 5/14/96  
SIGNATURE DATE

Registration No. 13593

- Land Surveyor,  Professional Engineer
- County Surveyor,  County Engineer

OFFICE OF THE COUNTY RECORDER

County of MARTIN

I hereby certify that this document was filed in the Co. Recorders Office at \_\_\_\_\_ M. on the \_\_\_\_\_ day of \_\_\_\_\_ A.D., 19\_\_\_\_.

County Recorder \_\_\_\_\_

By \_\_\_\_\_, Deputy

DOCUMENT NO. \_\_\_\_\_

**S.E. Cor., Sec. 11, T. 101 N., R. 30W.  
(Silver Lake Twp)**

**Statement of Evidence**

The corner was originally established during the Public Land Survey of 1854, by Oswald Brunius.

The Martin County Highway Dept. Tie Records indicate the corner was a stone "+" (30" deep), with a 1/2" iron pipe over stone (12" deep), with a R.R. Spk over 1/2" pipe (surface) Ties - 80.4 S = 4th F.P.S., 2.8 S = cl of road, 50.8 SE = Hole (top) E. end of 18" CSP

On Aug. 03, 1993, I found a R.R. Spk (surface)

The History shown was obtained from the Martin County Highway Dept. Tie Records and existing Certificates of Location, only. Further History information may be obtained from the Martin County Recorder.