

CERTIFICATE OF LOCATION OF GOVERNMENT CORNER

South
NORTH QUARTER Corner of Section 12, Township 101 N., Range 30 W., 5th P.M.

STATE OF MINNESOTA, County of MARTIN

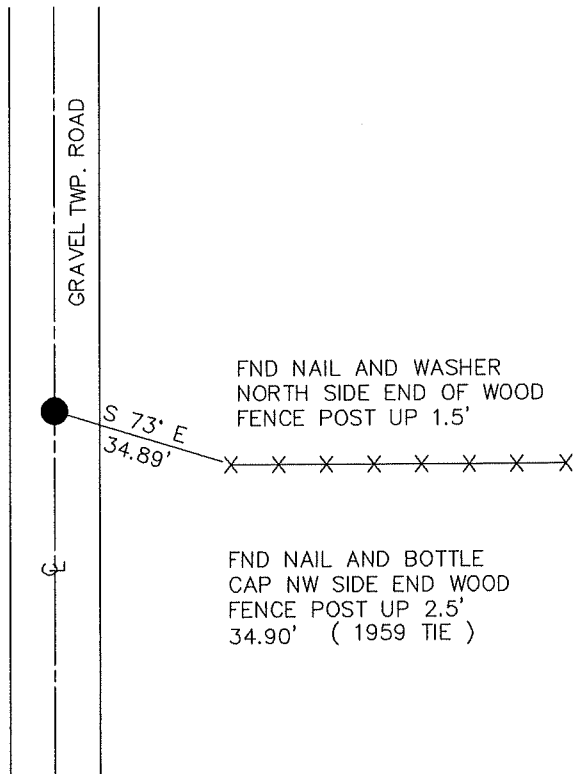
At the corner location shown on the sketch:

- On 8/14/91 found a STONE WITH "+" ON TOP, DOWN 0.7'
DATE WITH A 1" ID. IRON PIPE ON WEST SIDE DOWN 0.7'
- left monument as found, lowered monument, removed monument (explain)
- On _____ Placed a _____
DATE

SKETCH OF REFERENCE TIES



NOTE:
RESET A FOUND 1/2" ID. X 24"
IRON PIPE WITH PLASTIC CAP
STAMPED RLS #13593 ON THE
NORTHWEST SIDE OF STONE
DOWN 0.7'



1983 MARTIN COUNTY
COORDINATE SYSTEM

N = 126830.795
E = 386593.769

BEARING OBSERVED WITH COMPASS

Statement of evidence relative to this corner location is on back of page. 9/3/91
WMA 00330.00.00.01

I hereby certify that this document and the data contained herein was prepared by me or under my direct supervision

Bruce W. Sheppard
SIGNATURE

9-20-91
DATE

Registration No. 17003

- Land Surveyor, Professional Engineer
- County Surveyor, County Engineer

OFFICE OF THE COUNTY RECORDER

County of _____

I hereby certify that this document was filed in the Co. recorders office at _____ .M. on the _____ day of _____ A.D., 19____

County Recorder _____

By _____, Deputy

DOCUMENT NO. _____

The DNR Bureau of Engineering contacted the following for survey information:

Minnesota Secretary of State's Office
Martin County Recorder's Office
Martin County Highway Engineer's Office
Madsen Land Surveying of Fairmont
Bolton and Menk, Inc., of Fairmont

- 1854 U.S. General Land Office notes obtained from the Secretary of State's Office show the corner marked with a wood post and a charred stake in a mound of earth and sod with trench and pits. Also, planted pine seeds north, south, east and west.
- 1885 October, Survey Number 29 on page 84 in Surveyor's Record Book A obtained from the County Recorder's Office contains a survey by L. F. Brainerd. Survey states that quarter corner was identified. No other information about corner is given.
- 1889 June, Survey Number 37 on pages 87 and 88 in Surveyor's Record Book A obtained from the County Recorder's Office contains a survey by C. T. Montgomery, County Surveyor. Survey states that an old stake was found at corner. A cedar post was drove deep in the ground in place of the old stake and broken crockery and stones were buried along side of it. The corner is shown in the center of a north-south road.
- 1895 May, Survey Number 103 on page 49 in Surveyor's Record Book C obtained from the County Recorder's Office contains a survey by George E. Sawyer, Deputy County Surveyor. Survey states that corner was identified per Survey Number 37 on page 87 in Surveyor's Record Book A. The corner was remonumented with a 10" by 8" by 4" hardhead stone with an "+" and "1/4" on top. Sawyer notes the following about the corner:
"While surveying here I was laboring under delusion that Munger had established this corner (mixed with his record on N 1/4 S. 7, T. 101 N., R. 29 W.) and refused to accept it. Mr. Ruble's statement that Munger had claimed 1 chain surplus (instead of shortage) in east side of Section 12 seemed to partly confirm this conclusion, but now I see very clearly that on U.S. survey this error could easily have been made by correcting 64 links north instead of south as intended and the error in position east and west is undoubtedly the old 1 rod blunder where limit of error was exceeded. The reputation of this corner has never been questioned. See discussion on page 45-1/2 for similar case as to east and west measure. I make my record map and change of all corners to correspond with this identification."

A witness corner to corner is shown marked with a deposit of crockery 28" deep, 123.5 links (81.51') south and 31 links (20.46') east in the east edge of a wide grade. The quarter corner is shown: 20.163 chains (1330.758') from the north sixteenth corner of the northeast quarter of Section 12 which was marked with crockery to a depth of 25" and a 13" by 11" by 8" hardhead protruding 4"

- 1943 July, Survey Number 19 in Surveyor's Record Book H obtained from the County Recorder's Office contains a survey by Frank O. Jones, County Surveyor. Survey states that a stone with crockery was found 8" below the surface at corner. The following ties are shown to corner:
corner fence post, southwest, 33.7 feet
corner fence post, southeast, 29.8 feet
telephone pole, northwest, 59.4 feet
east and west fence lines, 9.8 feet
- 1956 August, Survey Number 928 in Surveyor's Record Book J obtained from the County Recorder's Office contains a survey by Frank O. Jones, County Surveyor. Survey states that a stone with a cross on it and crockery under it was found down 22" at corner. Crockery was built up over the cross and another stone (8" by 7" by 5") was laid flat over it and the following ties were taken:
8.6 feet north of fence east
nail and disk on second fence post north of fence to east, northwest, 49.8 feet
nail and disk on second fence post south of fence to east, southwest, 46.7 feet
nail and disk on corner fence post, southeast, 34.4 feet
- 1959 July, DNR Bureau of Engineering found an iron pipe over a stone with an "+" at corner. The following ties are shown to corner:
8.6 feet north of east-west fence
nail and bottle cap on second fence post north of fence to east, northwest, 49.8 feet
nail and bottle cap on second fence post south of fence to east, southwest, 46.7 feet
nail and bottle cap on corner fence post, southeast, 34.4 feet
1329.7 feet from a 4 foot long iron pipe set in the center of crockery at the north sixteenth corner of the northeast quarter of Section 12
- 1991 August, DNR Bureau of Engineering found a stone with an "+" at corner down 0.7 of a foot. Also, found a 1" inside diameter iron pipe down 0.7 of a foot on the west side of the stone and a 1/2" inside diameter by 24" long iron pipe with a plastic cap stamped RLS #13593 on the stone's northwest side with its top bent over the stone. Searched for and found one record tie as shown on the sketch of reference ties. The stone was found to be:
8.4 feet north of a fence east
1.0 feet west of the center line of a north-south road
1330.30 feet from a found 60" long angle iron fence post with the spade end up at the north sixteenth corner of the northeast quarter of Section 12

Analysis of the above information led the DNR Bureau of Engineering to conclude that the found stone marks the location of the corner.

