

# CERTIFICATE OF LOCATION OF GOVERNMENT CORNER

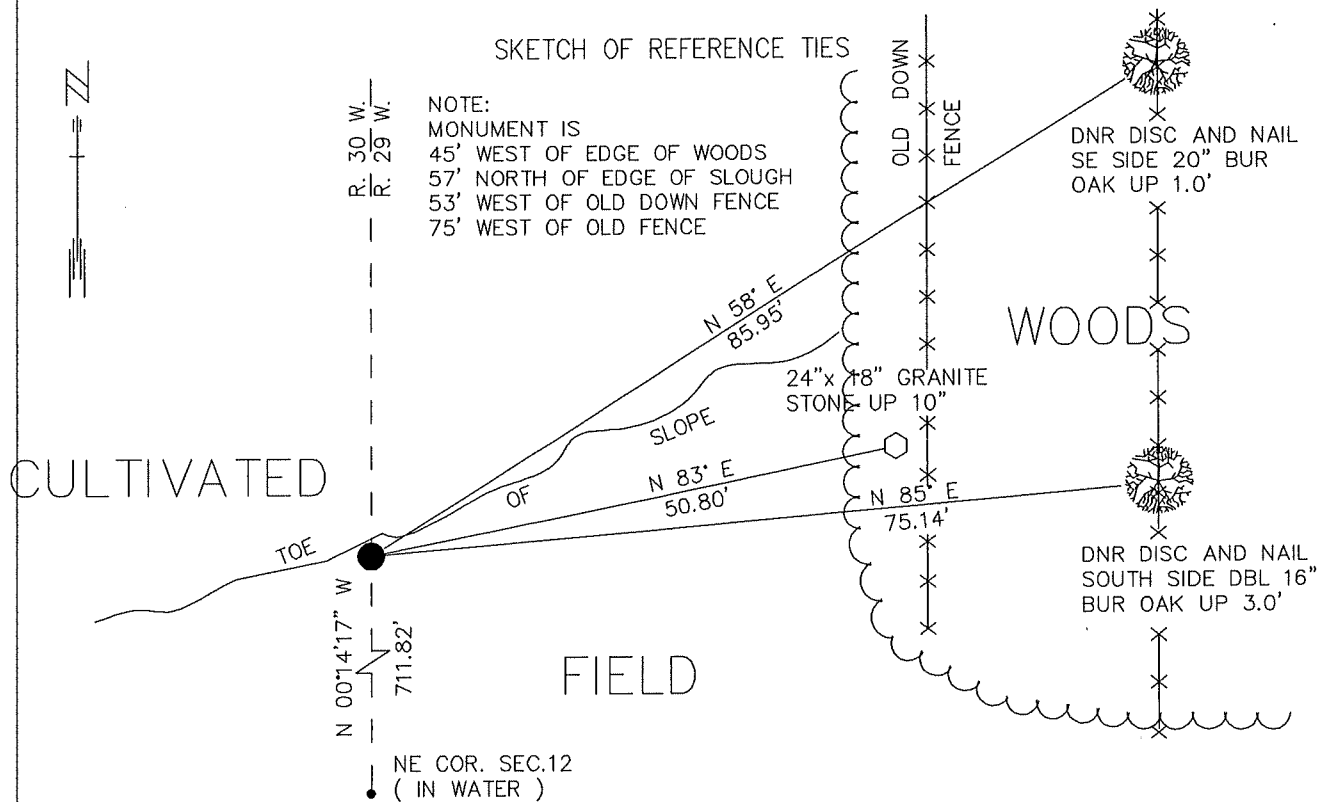
WITNESS CORNER  
TO THE Northeast

Corner of Section 12, Township 101 N., Range 30 W., 5th P.M.

STATE OF MINNESOTA, County of MARTIN

At the corner location shown on the sketch:

- On \_\_\_\_\_ found a \_\_\_\_\_  
DATE
- left monument as found,  lowered monument,  removed monument (explain)
- On 8/26/91 Placed a 3/4" X 24" REBAR WITH PLASTIC CAP STAMPED  
DATE  
"MN DNR PROP MONUMENT" DOWN 2.0'



1983 MARTIN COUNTY  
COORDINATE SYSTEM  
WITNESS CORNER  
N = 127352.186  
E = 389244.584

1983 MARTIN COUNTY  
COORDINATE SYSTEM  
SECTION CORNER  
N = 126640.372  
E = 389247.542

BEARING TO NE COR. SECTION 12 IS IN  
COUNTY ORIENTATION  
BEARINGS OBSERVED WITH COMPASS

Statement of evidence relative to this corner location is on back of page.

9/3/91  
WMA 00330.00.00.01

I hereby certify that this document and the data contained herein was prepared by me or under my direct supervision.

Bruce W. Sheppard 9-20-91  
SIGNATURE DATE

Registration No. 17003

- Land Surveyor,  Professional Engineer  
 County Surveyor,  County Engineer

OFFICE OF THE COUNTY RECORDER

County of \_\_\_\_\_

I hereby certify that this document was filed in the Co. recorders office at \_\_\_\_\_ .M. on the \_\_\_\_\_ day of \_\_\_\_\_ A.D., 19\_\_\_\_

County Recorder \_\_\_\_\_

By \_\_\_\_\_, Deputy

DOCUMENT NO. \_\_\_\_\_

## Northeast Corner of Section 12, Township 101 North, Range 30 West

The DNR Bureau of Engineering contacted the following for survey information:

Minnesota Secretary of State's Office  
 Martin County Recorder's Office  
 Martin County Highway Engineer's Office  
 Madsen Land Surveying of Fairmont  
 Bolton and Menk, Inc., of Fairmont

1854 U.S. General Land Office notes obtained from the Secretary of State's Office's Office show the location of the corner to be in a pond. A witness corner was set 11 chains (726.00') North and marked with a wood post and a trench with the following bearing trees marked:

24" Br. Oak, South 57-1/4° West, 667 links (440.22')

14" Br. Oak, South 55-1/4° West, 677 links (446.82')

The witness corner is shown:

51.00 chains (3366.00') from the east quarter corner of Section 12

1878 May, Survey Number 5 on page 2 in Surveyor's Record Book A obtained from the County Recorder's Office contains a survey by D. P. Munger, County Surveyor. Survey states that the witness corner was found but a description of a monument is not given. No distances to the witness corner are shown. Furthermore, no information is given about the section corner.

This information is also contained on pages 8 and 9 in East Chain Field Book 1 obtained from the County Recorder's Office.

1878 May, Survey Number 6 on page 2 in Surveyor's Record Book A obtained from the County Recorder's Office contains a subdivision of Section 6 by D. P. Munger, County Surveyor. Survey shows that all the 1/8 corners, a.k.a. sixteenth corners, in the section were established. No description of what was found or set at the government corners is given. Furthermore, survey does not show any distances.

This information is also contained on pages 6 and 7 in East Chain Field Book 1 obtained from the County Recorder's Office.

1885 October, Survey Number 36 on page 13 in Surveyor's Record Book A obtained from the County Recorder's Office contains a survey, surveyor not indicated. Survey mentions the section corner but does not indicate what was found or set. Furthermore, survey does not give any information about the witness corner.

1885 October, Survey Number 29 on page 84 in Surveyor's Record Book A obtained from the County Recorder's Office contains a survey by L. F. Brainerd. The following is stated about corner:

a) this witness corner could not be identified

b) the section line running between Ranges 29 and 30 is distinctly marked and the position of the witness corner cannot be widely mistaken

## Northeast Corner of Section 12, Township 101 North, Range 30 West

1895 May, Survey Number 103 on page 49 in Surveyor's Record Book C obtained from the County Recorder's Office contains a survey by George E. Sawyer, Deputy County Surveyor. Survey shows that a 16" long oak stake in a mound was found at the witness corner. Glass to a depth of 24" with a 13" by 12" by 11" hardhead with a "+" and "WC" 4 inches above the surface were set to mark the witness corner. Sawyer notes the following about the witness corner:

verified the witness corner by stumps of U.S. bearing trees but found errors in U.S. notes as follows:

- 1) 24" Br. Oak, S.  $57-1/4^{\circ}$  W., 6.67 chains = (stump tipped over and estimated place for blaze) S.  $57-1/4^{\circ}$  W., 6.36 chains
- 2) 14" Br. Oak, S.  $55-1/4^{\circ}$  W., 6.77 chains = (stump center not exactly certain) S.  $55^{\circ} 28'$  W., 6.76 chains

I think their 6.67 meant 6.37 and by subtracting 10 links instead of 40 links (wrong end of chain) from distance to further stump (6.77) they made a result of 6.67. It is entirely unlikely that separate measures were made to each stump (tree) from the witness corner being in all most the same direction and so far away. The  $55-1/4^{\circ}$  was probably  $55-1/2^{\circ}$  and misread or miscopied.

The witness corner was found to be:

50.06 chains (3303.96') from the east quarter corner of Section 12 about 1.00 chain (66.00') S.  $60^{\circ}$  W. of a fence corner

Survey also shows that the northeast corner of Section 12 was established proportionally and on line between the witness corner and the east quarter corner of Section 12. A 1-1/2" by 72" long pole protruding 3 feet with glass to a depth of 24" 3" north and three 10" long stones around the pole were set to mark the section corner. The corner is shown:

- 10.79 chains (712.14') from the witness corner
- 39.27 chains (2591.82') from the east quarter corner of Section 12
- 40.326 chains (2661.516') from the north quarter corner of Section 12
- 20.163 chains (1330.758') from the north sixteenth of the northeast quarter of Section 12 which was marked with crockery to a depth of 25" and a 13" by 11" by 8" hardhead protruding 4"

Sawyer also notes the following:

There is a whole chain shortage in the east side of Section 12 in U.S. work and evidenced clearly that it occurred in getting over the pond around the northeast corner of Section 12, now a dry slough.

1896 June, Survey Number 183 on page 89 in Surveyor's Record Book C obtained from the County Recorder's Office contains a survey by George E. Sawyer, Deputy County Surveyor. Sawyer notes that all corners on Survey Number 8 on page 3 in Surveyor's Record Book A have disappeared except the witness corner to the northeast corner of Section 13. Survey shows that corner was identified per Survey Number 103 on page 49 in Surveyor's Record Book C. The corner is shown:

40.088 chains (2645.808') from the north quarter corner of Section 7  
 Computations using variances at the north quarter corner of Section 7 yields a distance of 5283.55 feet from the northeast corner of Section 12 to the northeast corner of Section 7.

Sawyer also notes that at the time of Survey Number 8 on page 3 in Surveyor's Record Book A this corner was difficult to access and the results are likely to be extremely wild so he did not deem it worthwhile to search very diligently for it.

## Northeast Corner of Section 12, Township 101 North, Range 30 West

- 1956 August, Survey Number 928 in Surveyor's Record Book J obtained from the County Recorder's Office contains a survey by Frank O. Jones, County Surveyor. Survey shows that corner was established midway and on line between the east quarter corner of Section 1 and the east quarter corner of Section 12, 2605.0 feet apart. A monument was not set to mark the corner. Survey does show that a stone and an iron pipe were set at the east sixteenth corner of the northeast quarter of Section 12, 1302.5 feet from the east quarter corner of Section 12. No information is given about the witness corner. Survey also shows that the stone at the north sixteenth corner of the northeast quarter of Section 12 per Survey Number 43 on page 49 in Surveyor's Record Book C is gone but were able to identify the crockery. The crockery was found 16" below the surface and 17" north and 4" east of a corner fence post.
- 1959 July, DNR Bureau of Engineering established a position for corner using information obtained from Frank Jones, County Highway Engineer. A monument was not set to mark corner because its location is in a lake. The corner is shown:  
 2619.0 feet from the east quarter corner of Section 1  
 2590.0 feet from the east quarter corner of Section 12  
 No information is given about the witness corner.
- Crockery 16" deep with a 4' long IP in its center was found 17" north and 4" east of a corner fence post at the north sixteenth corner of the northeast quarter of Section 12.
- 1973 DNR Bureau of Engineering found a stone at the east sixteenth corner of the northeast quarter of Section 12. The stone was found to be:  
 3905.16 feet from the east quarter corner of Section 1  
 The northeast corner of Section 12 was established as follows:  
 a) 1301.72 feet (3905.16/3) from the stone at the east sixteenth corner of the northeast quarter of Section 12  
 b) on line between the stone at the east sixteenth corner of the northeast quarter of Section 12 and the east quarter corner of Section 1  
 A monument was NOT set to mark the computed location of the corner. No information is given about the witness corner.
- 1981 March, a worksheet obtained from Madsen Land Surveying contains a subdivision of Section 7 by Gary D. Martin, RLS #12967. The worksheet shows that a stone was found at the east sixteenth corner of the northeast quarter of Section 12. The stone was found to be:  
 1304.03 feet the east quarter corner of Section 12  
 The northeast corner of Section 12 was established as follows:  
 a) on the northerly extension of a line from the east quarter corner of Section 12 through the stone found at the east sixteenth corner of the northeast quarter of Section 12  
 b) 1304.03 feet from the stone found at the east sixteenth corner of the northeast quarter of Section 12.  
 The computed position for section corner was not monumented but it's shown:  
 2601.12 feet from the east quarter corner of Section 1  
 2624.91 feet from the north quarter corner of Section 7  
 No information is given about the witness corner.

## Northeast Corner of Section 12, Township 101 North, Range 30 West

1991 August, DNR Bureau of Engineering found a 60" long angle iron fence post with the spade end up down 4.0 feet at the north sixteenth corner of the northeast quarter of Section 12. Removed the fence post and searched for the record IP and crockery but found nothing. In excavating, water was encountered down 4.3 feet. The angle iron fence post was found to be:

1.8 feet northeast of an old wood fence post with fences north, south, and east

1330.30 feet from the north quarter corner of Section 12

Accepted the angle iron fence post as the location of the north sixteenth corner of the northeast quarter of Section 12 as monumented by George E. Sawyer in 1895.

Replaced the angle iron fence post with a MN DNR Prop Monument and set the fence post 1 foot north of it.

Then computed the location of the northeast corner of Section 12 per George E. Sawyer's 1895 survey as follows:

- a) on the easterly extension of a line from the north quarter corner of Section 12 through the angle iron fence post found at the north sixteenth corner of the northeast quarter of Section 12
- b) 1330.30 feet from the angle iron fence post found at the north sixteenth corner of the northeast quarter of Section 12

The computed position of the northeast corner of Section 12 was found to be:

2590.66 feet from the east quarter corner of Section 12

5284.38 feet from the northeast corner of Section 7

1286.33 feet from a stone found in the area of the east sixteenth corner of the northeast quarter of Section 12

Then computed the location of the witness corner to the northeast corner of Section 12 per George E. Sawyer's 1895 survey as follows:

- a) on the northerly extension of a line from the east quarter corner of Section 12 through the computed location of the northeast corner of Section 12
- b) 711.82 feet (proportional measurement) from the computed location of the northeast corner of Section 12

1991 August, DNR Bureau of Engineering dug a 4 foot north-south by 6 foot east-west by 6 foot deep hole by hand in a cultivated field at the computed position of the witness corner. Was unable to find the record stone or glass set by George E. Sawyer in 1895.

Analysis of the above information led the DNR Bureau of Engineering to conclude that the computed position for the northeast corner of Section 12 and its witness corner mark the location of the corners as determined by George E. Sawyer in 1895.