

CERTIFICATE OF LOCATION OF GOVERNMENT CORNER

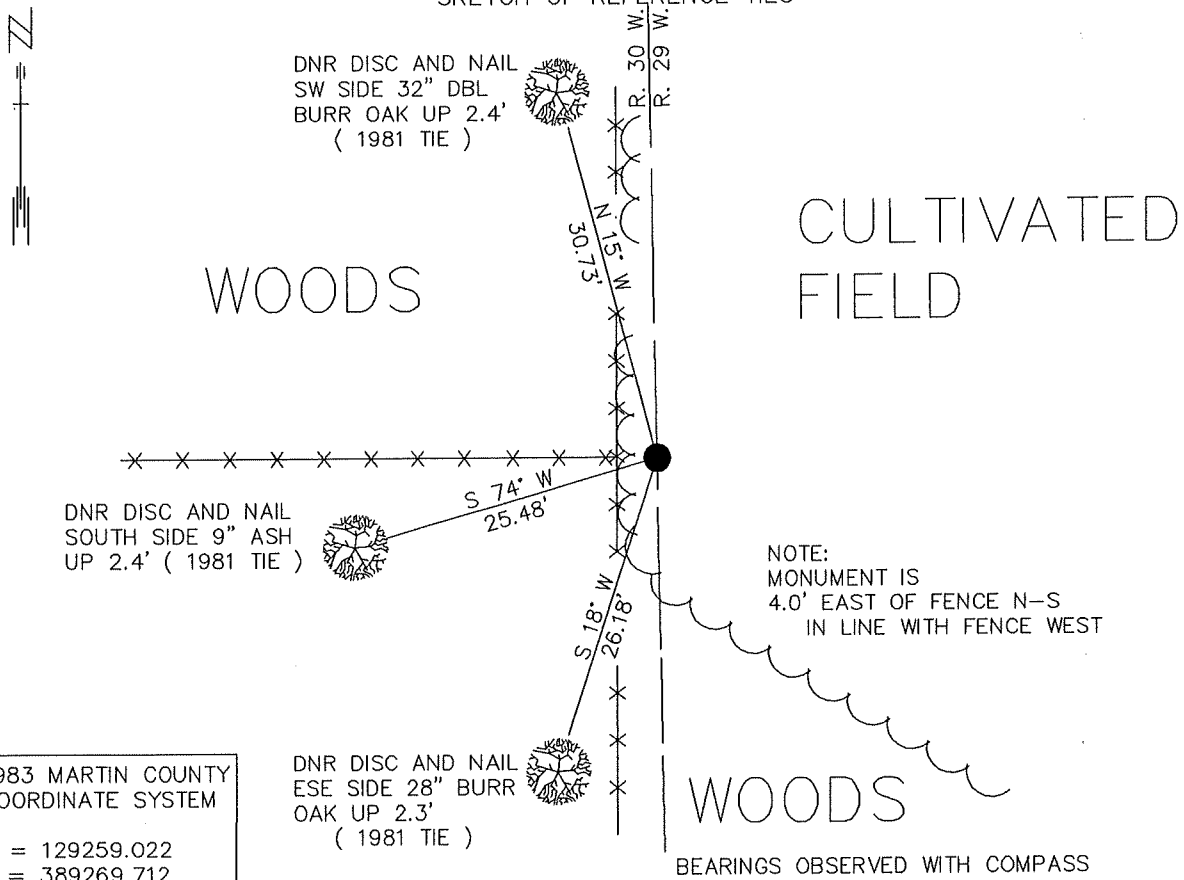
EAST QUARTER Corner of Section 1, Township 101 N., Range 30 W., 5th P.M.

STATE OF MINNESOTA, County of MARTIN

At the corner location shown on the sketch:

- On 7/10/91 found a 6" X 6" RED GRANITE STONE WITH "+" ON TOP, DOWN 1.0'
DATE WITH A RAILROAD SPIKE ON ITS EAST SIDE
- left monument as found, lowered monument, removed monument (explain)
- On _____ Placed a _____
DATE

SKETCH OF REFERENCE TIES



1983 MARTIN COUNTY COORDINATE SYSTEM

N = 129259.022
E = 389269.712

DNR DISC AND NAIL
ESE SIDE 28" BURR
OAK UP 2.3'
(1981 TIE)

BEARINGS OBSERVED WITH COMPASS

Statement of evidence relative to this corner location is on back of page.

9/3/91
WMA 00330.00.00.01

I hereby certify that this document and the data contained herein was prepared by me or under my direct supervision.

Bruce W. Sheppard 9-20-91
SIGNATURE DATE

Registration No. 17003

- Land Surveyor, Professional Engineer
- County Surveyor, County Engineer

OFFICE OF THE COUNTY RECORDER

County of _____

I hereby certify that this document was filed in the Co. recorders office at _____ .M. on the _____ day of _____ A.D., 19____

County Recorder _____

By _____, Deputy

DOCUMENT NO. _____

The DNR Bureau of Engineering contacted the following for survey information:

Minnesota Secretary of State's Office
Martin County Recorder's Office
Martin County Highway Engineer's Office
Madsen Land Surveying of Fairmont
Bolton and Menk, Inc., of Fairmont

1854 U.S. General Land Office notes obtained from the Secretary of State's Office's Office show the corner marked with a wood post with the following bearing trees marked:

20" Br. Oak, South 42° East, 354 links (233.64')
20" Br. Oak, North $33-1/4^{\circ}$ West, 177 links (116.82')

1870 November, Survey Number 1 on page 1 in Surveyor's Record Book A obtained from the County Recorder's Office contains a survey by L. F. Brainerd, County Surveyor. Survey states that corner was located from the bearing trees which are cut down, stumps remain in good preservation. A description of what was found or set at corner is not given.

This information is also contained on page 6 in East Chain Field Book 1 obtained from the County Recorder's Office.

1878 May, Survey Number 6 on page 2 in Surveyor's Record Book A obtained from the County Recorder's Office contains a subdivision of Section 6 by D. P. Munger, County Surveyor. Survey shows that all the $1/8$ corners, a.k.a. sixteenth corners, in the section were established. No description of what was found or set at the government corners is given. Furthermore, survey does not show any distances.

This information is also contained on pages 6 and 7 in East Chain Field Book 1 obtained from the County Recorder's Office.

1885 October, Survey Number 36 on page 13 in Surveyor's Record Book A obtained from the County Recorder's Office contains a survey, surveyor not indicated. Survey shows that corner was identified per Survey Number 29 on page 84 in Surveyor's Record Book A.

This information is also contained on pages 7 and 8 in East Chain Field Book 1 obtained from the County Recorder's Office.

1885 October, Survey Number 29 on page 84 in Surveyor's Record Book A obtained from the County Recorder's Office contains a survey by L. F. Brainerd. Survey states that quarter corner was identified. The following is also noted:

- a) large stone in place, S. $13-1/2^{\circ}$ W., 13 paces
- b) some large jaw bone with teeth remaining in them buried in mound
- c) stumps of oaks correspond to position of bearing trees of US Survey

1956 August, Survey Number 928 in Surveyor's Record Book J obtained from the County Recorder's Office contains a survey by Frank O. Jones, County Surveyor. Survey states that a stone with crockery under it was found at corner. The corner is shown:

3.2 feet east and 1 foot south of an oak corner fence post

- 1959 July, DNR Bureau of Engineering received the following information about corner from Frank Jones, County Highway Engineer: Stone with crockery under it in place at corner. The following ties are shown to corner:
3.2 feet east and 1 foot south of an oak corner post
- 1972 November, DNR Bureau of Engineering found a stone with a "+" on top at corner.
- 1980 October, a Certificate of Survey for the northeast quarter of Section 6 signed by John Madsen, RLS #13593, and revised in April 1981 obtained from Madsen Land Surveying shows that a stone was found at corner.
- 1981 March, a Certificate of Location of Government Corner signed by Gary D. Martin, RLS #12967, obtained from Madsen Land Surveying shows that a 6" diameter stone with a "+" on top was found 1 foot below the surface at corner. The following ties were taken to corner:
3.5 feet east of a north-south fence
1 foot south of fence west
brass disc and nail in 40" blazed Oak, S. $13^{\circ} 30'$ W., 26.42 feet
brass disc and nail in 6" blazed Ash, S. 70° W., 25.62 feet
brass disc and nail in 30" double blazed Oak, N. 23° W., 30.85 feet
Railroad spikes were set on the east and west sides of the stone for locating purposes only.

This information is also contained on a page in a corner tie book obtained from the County Highway Engineer's Office.

- 1991 July, DNR Bureau of Engineering found a 6" by 6" red granite stone with an "+" on top down 1.0 feet at corner. Also found a railroad spike on the east edge of the stone. Searched for and found record ties as shown on sketch of reference ties. The stone was found to be:
4.0 feet east of a corner fence post with fences north, south and west
2639.29 feet from the northeast corner of Section 1

Analysis of the above information led the DNR Bureau of Engineering to conclude that the found stone marks the location of the corner.

