

CERTIFICATE OF LOCATION OF GOVERNMENT CORNER

PLEASANT MOUND NORTH EDGE OF NASHVILLE
SOUTH 1/4 COR _____ SEC. 35 _____, Township T 105 N, Range R 29 W, 5th P.M.

STATE OF MINNESOTA, County of MARTIN - *Blue Earth Line*

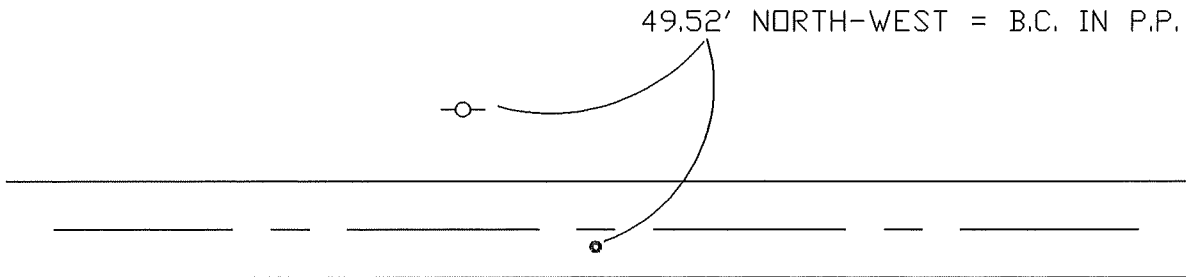
At the corner location shown on the sketch:

On 7-18-97 found a 18" PIECE OF WOOD
DATE

left monument as found, lowered monument, removed monument (explain)

On 7-18-97 Placed a 5/8" X 24" I.R. W/ALUM. CAP IN PLACE OF WOOD
DATE

SKETCH OF REFERENCE TIES



Statement of evidence relative to this corner location is on back of page.

I hereby certify that this document and the data contained herein was prepared by me or under my direct supervision.

SIGNATURE DATE

Registration No. _____

- Land Surveyor, Professional Engineer
- County Surveyor, County Engineer

OFFICE OF THE REGISTER OF DEEDS
County of MARTIN

I hereby certify that this document was filed in the Reg. of Deeds office at _____M. on the

_____day of _____A.D., 19____

Register of Deeds _____

By _____, Deputy

DOCUMENT NO. _____