

CERTIFICATE OF LOCATION OF GOVERNMENT CORNER

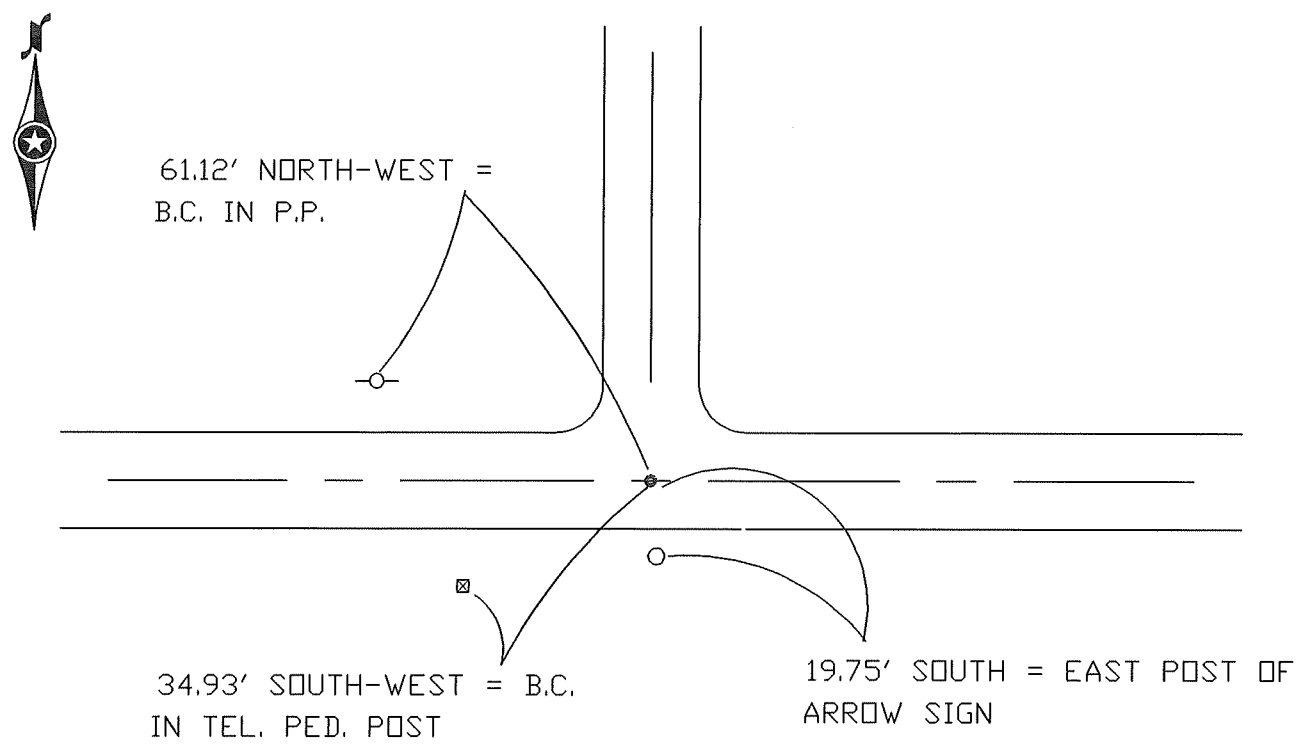
PLEASANT MOUND NORTH EDGE OF NASHVILLE
SOUTH-EAST COR. Corner of Section 35, Township T 105 N, Range R 29 W, 5th P.M.

STATE OF MINNESOTA, County of MARTIN - Blue Earth Line

At the corner location shown on the sketch:

- On 7-1-97 found a LARGE NAIL (3" DEEP) DETECT METAL UNDER
DATE
- left monument as found, lowered monument, removed monument (explain)
- On 7-1-97 Placed a REPLACED NAIL WITH A 5/8" X 24" I.R. W/ALUM.
DATE
CAP (4" DEEP)

SKETCH OF REFERENCE TIES



Statement of evidence relative to this corner location is on back of page.

I hereby certify that this document and the data contained herein was prepared by me or under my direct supervision.

SIGNATURE DATE

Registration No. _____

- Land Surveyor, Professional Engineer
- County Surveyor, County Engineer

OFFICE OF THE REGISTER OF DEEDS
County of MARTIN

I hereby certify that this document was filed in the Reg. of Deeds office at _____M. on the

_____day of _____A.D., 19____
Register of Deeds _____

By _____, Deputy

DOCUMENT NO. _____