

CERTIFICATE OF LOCATION OF GOVERNMENT CORNER

PLEASANT MOUND

SOUTH 1/4 COR _____ Corner of Section 34, Township T 105, Range R 29 W, 5th P.M.

STATE OF MINNESOTA, County of MARTIN - Blue Earth Line

At the corner location shown on the sketch:

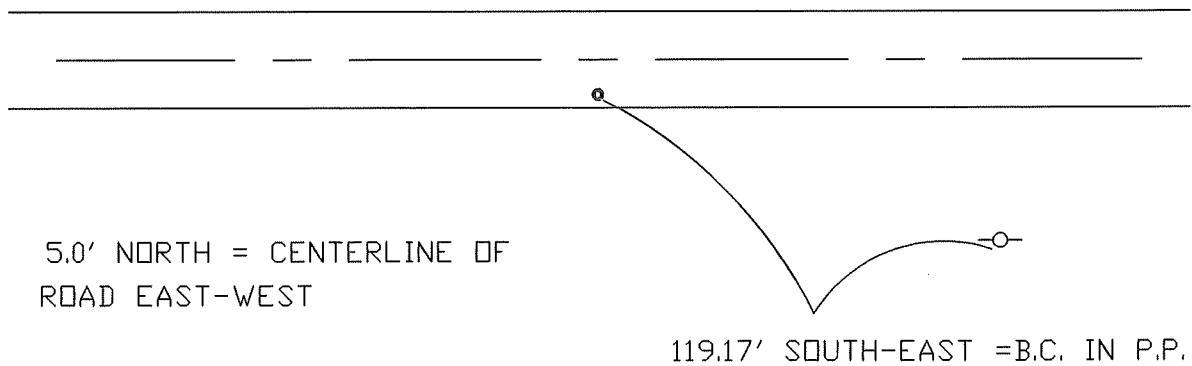
On 7-9-97 found a POINTED STONE (26" DEEP)
DATE

left monument as found, lowered monument, removed monument (explain)

On 7-9-97 Placed a DRILLED A HOLE IN STONE & SET A 5/8" X 24"
DATE

I.R. W/ALUM. CAP OVER STONE (4" DEEP)

SKETCH OF REFERENCE TIES



Statement of evidence relative to this corner location is on back of page.

I hereby certify that this document and the data contained herein was prepared by me or under my direct supervision.

SIGNATURE DATE

Registration No. _____

- Land Surveyor, Professional Engineer
- County Surveyor, County Engineer

OFFICE OF THE REGISTER OF DEEDS

County of MARTIN

I hereby certify that this document was filed in the Reg. of Deeds office at

_____.M. on the

_____ day of _____ A.D., 19____

Register of Deeds _____

By _____, Deputy

DOCUMENT NO. _____