

CERTIFICATE OF LOCATION OF GOVERNMENT CORNER

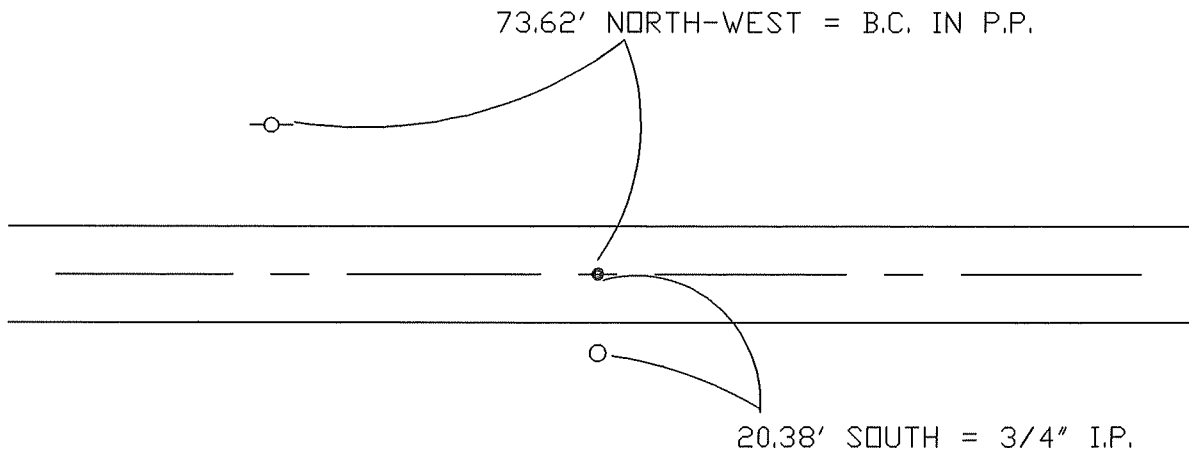
PLEASANT MOUND NORTH EDGE OF NASHVILLE
 SOUTH-EAST COR Corner of Section 34, Township 105 N, Range 29 W, 5th P.M.

STATE OF MINNESOTA, County of MARTIN - Blue Earth Line

At the corner location shown on the sketch:

- On 7-21-97 found a BURIED STEEL FENCE POST (6" DEEP)
DATE
- left monument as found, lowered monument, removed monument (explain)
- On 7-21-97 Placed a 5/8" X 24" I.R. W/ALUM. CAP OVER FENCE POST
DATE
(4" DEEP)

SKETCH OF REFERENCE TIES



CORNER IS IN LINE WITH WEST
 EDGE OF FIELD APPROACH TO
 NORTH

Statement of evidence relative to this corner location is on back of page.

I hereby certify that this document and the data contained herein was prepared by me or under my direct supervision.

SIGNATURE DATE

Registration No. _____

- Land Surveyor, Professional Engineer
- County Surveyor, County Engineer

OFFICE OF THE REGISTER OF DEEDS
 County of MARTIN

I hereby certify that this document was filed in the Reg. of Deeds office at _____M. on the

_____day of _____A.D., 19____
 Register of Deeds _____

By _____, Deputy
 DOCUMENT NO. _____