

# CERTIFICATE OF LOCATION OF GOVERNMENT CORNER

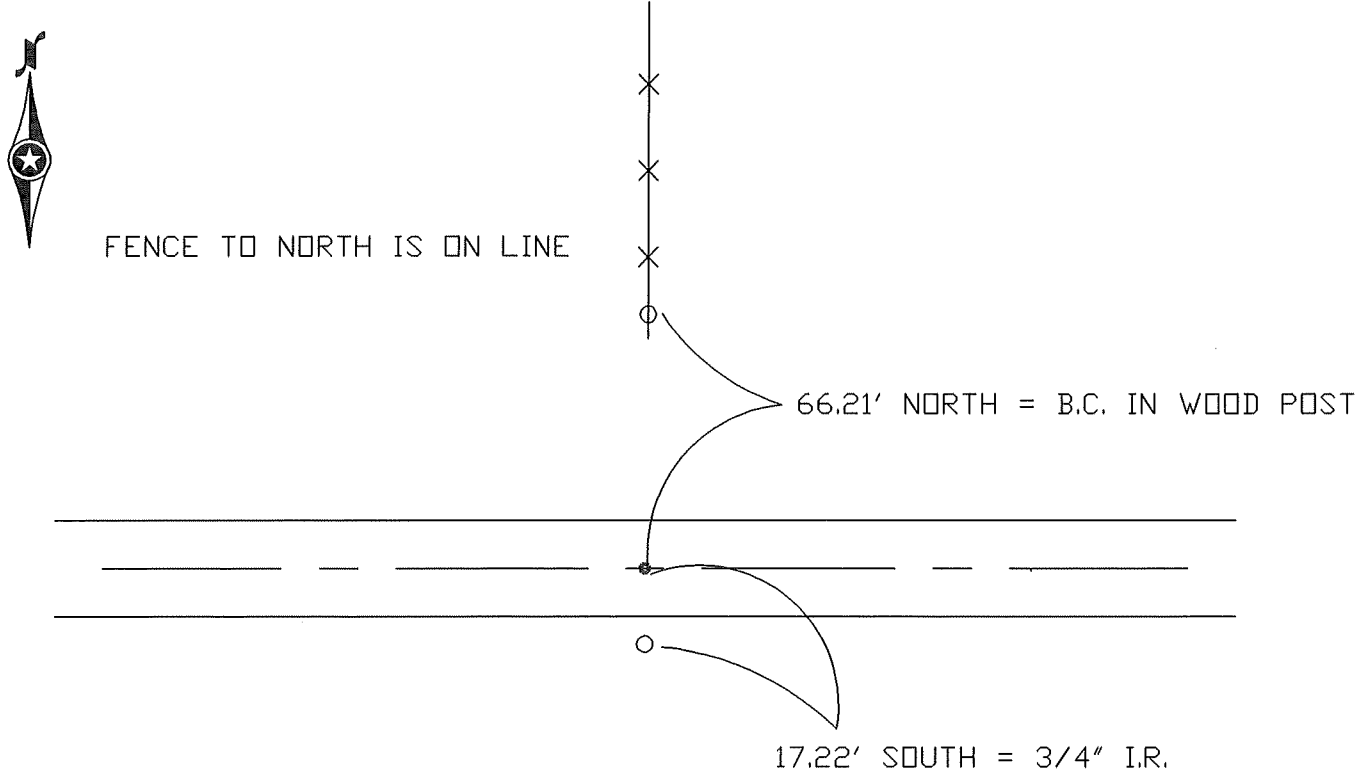
PLEASANT MOUND NORTH EDGE OF NASHVILLE  
 SOUTH 1/4 COR Corner of Section 33, Township T 105 N, Range R 29 W, 5th P.M.

STATE OF MINNESOTA, County of MARTIN - Blue Earth Line

At the corner location shown on the sketch:

- On 5-8-97 found a 1-1/4" I.P. ( 8" DEEP )  
DATE
- left monument as found,  lowered monument,  removed monument (explain)
- On 5-8-97 Placed a 5/8" X 24" I.R. W/ALUM. CAP OVER I.P. ( 4" DEEP )  
DATE

## SKETCH OF REFERENCE TIES



Statement of evidence relative to this corner location is on back of page.

I hereby certify that this document and the data contained herein was prepared by me or under my direct supervision.

\_\_\_\_\_ DATE \_\_\_\_\_  
SIGNATURE

Registration No. \_\_\_\_\_

Land Surveyor,       Professional Engineer  
 County Surveyor,     County Engineer

OFFICE OF THE REGISTER OF DEEDS  
 County of MARTIN

I hereby certify that this document was filed in the Reg. of Deeds office at \_\_\_\_\_, M. on the \_\_\_\_\_ day of \_\_\_\_\_ A.D., 19\_\_\_\_

Register of Deeds \_\_\_\_\_  
 By \_\_\_\_\_, Deputy  
 DOCUMENT NO. \_\_\_\_\_