

CERTIFICATE OF LOCATION OF GOVERNMENT CORNER

PLEASANT MOUND

NORTH EDGE OF NASHVILLE

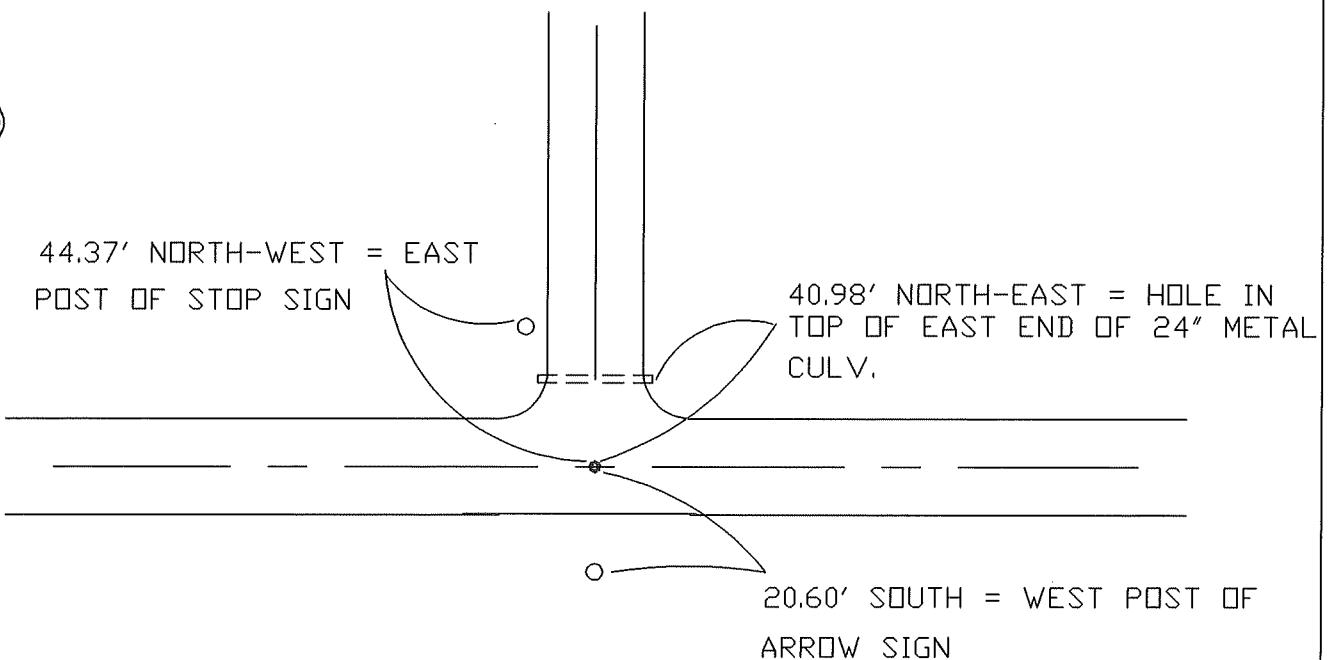
SOUTH-EAST COR Corner of Section 33, Township T105 N, Range R 29 W, 5th P.M.

STATE OF MINNESOTA, County of MARTIN - Blue Earth Line

At the corner location shown on the sketch:

- On 7-21-97 found a PREVIOUS SURVEY CO. HAD FOUND NOTHING AT THIS CORNER
DATE
- left monument as found, lowered monument, removed monument (explain)
- On 7-21-97 Placed a 5/8" X 24" I.R. W/ALUM. CAP (4" DEEP) IN ACCORDANCE WITH PREVIOUS SURVEY INFORMATION
DATE

SKETCH OF REFERENCE TIES



Statement of evidence relative to this corner location is on back of page.

I hereby certify that this document and the data contained herein was prepared by me or under my direct supervision.

SIGNATURE DATE

Registration No. _____

- Land Surveyor, Professional Engineer
- County Surveyor, County Engineer

OFFICE OF THE REGISTER OF DEEDS
County of MARTIN

I hereby certify that this document was filed in the Reg. of Deeds office at _____M. on the

_____day of _____A.D., 19____

Register of Deeds _____

By _____, Deputy

DOCUMENT NO. _____