

# CERTIFICATE OF LOCATION OF GOVERNMENT CORNER

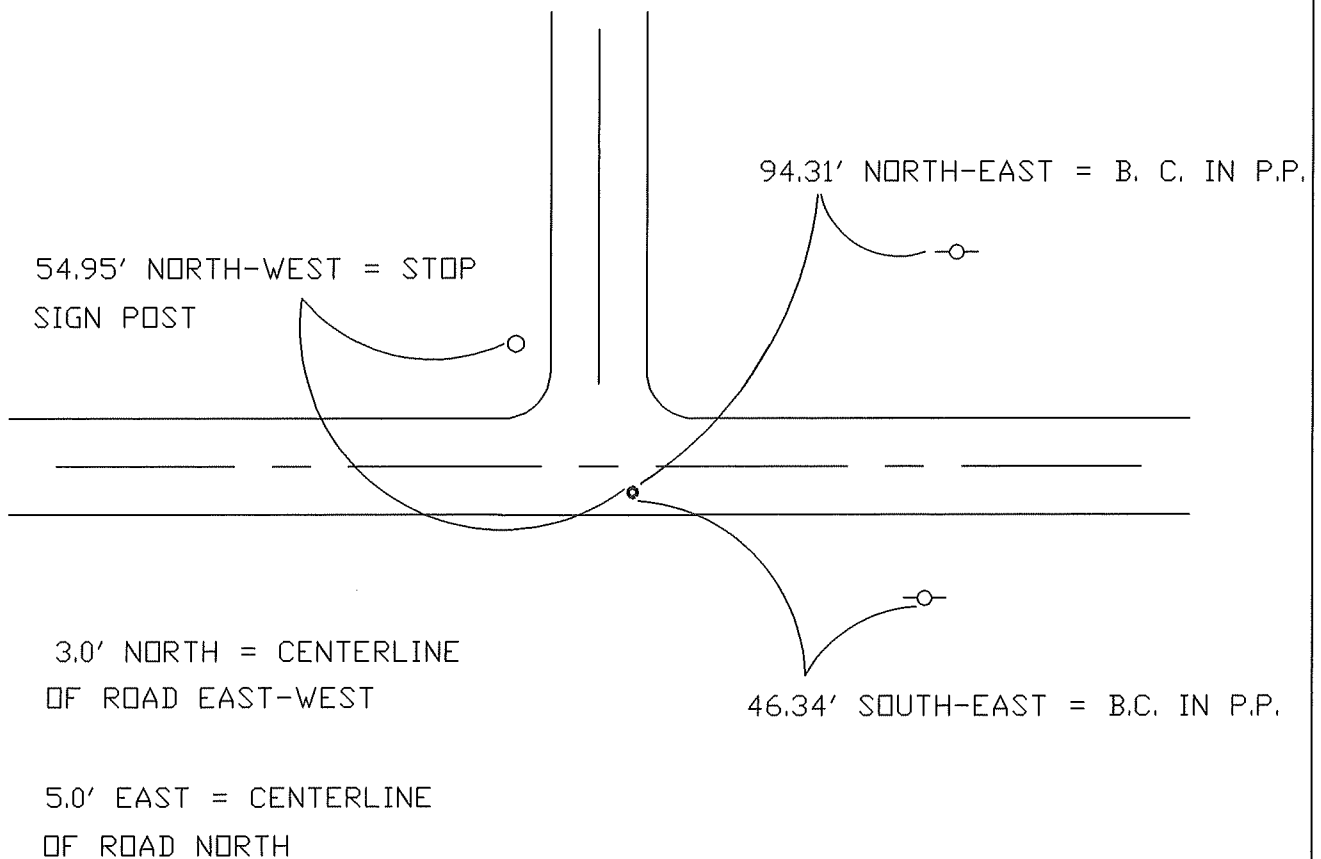
PLEASANT MOUND NORTH EDGE OF NASHVILLE  
 SOUTH 1/4 COR Corner of Section 32, Township T 105 N, Range R 29 W, 5th P.M.

STATE OF MINNESOTA, County of MARTIN - Bird Earth Line

At the corner location shown on the sketch:

- On 7-9-97 found a LARGE STONE ( 20" DEEP )  
DATE
- left monument as found,  lowered monument,  removed monument (explain)
- On 7-9-97 Placed a REMOVED STONE & SET A 3/4" X 16" I.P. UNDER  
DATE  
A 5/8" X 24 I.R. W/ALUM. CAP ( 4" DEEP )

## SKETCH OF REFERENCE TIES



Statement of evidence relative to this corner location is on back of page.

I hereby certify that this document and the data contained herein was prepared by me or under my direct supervision.

\_\_\_\_\_  
SIGNATURE                      DATE

Registration No. \_\_\_\_\_

- Land Surveyor,                       Professional Engineer
- County Surveyor,                       County Engineer

OFFICE OF THE REGISTER OF DEEDS  
 County of MARTIN

I hereby certify that this document was filed in the Reg. of Deeds office at \_\_\_\_\_M. on the

\_\_\_\_\_ day of \_\_\_\_\_ A.D., 19\_\_\_\_

Register of Deeds \_\_\_\_\_

By \_\_\_\_\_, Deputy

DOCUMENT NO. \_\_\_\_\_