

# CERTIFICATE OF LOCATION OF GOVERNMENT CORNER

PLEASANT MOUND

SOUTH-EAST COR. Corner of Section 31, Township T 105 N, Range R 29 W, 5th P.M.

STATE OF MINNESOTA, County of MARTIN - Blue Earth Line

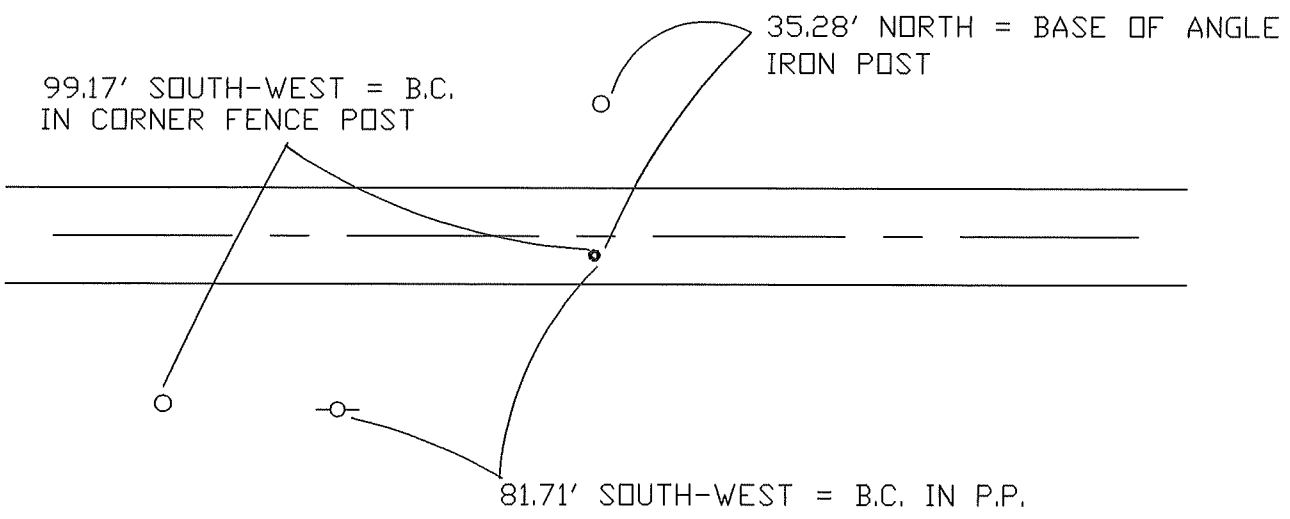
At the corner location shown on the sketch:

- On 5-8-97 found a LARGE NAIL ( 6" DEEP )  
DATE
- left monument as found,  lowered monument,  removed monument (explain)
- On 5-8-97 Placed a 5/8" X 24" I.R. W/ALUM. CAP ( 4" DEEP )  
DATE

## SKETCH OF REFERENCE TIES



3.5' NORTH = CENTERLINE OF ROAD EAST-WEST



Statement of evidence relative to this corner location is on back of page.

I hereby certify that this document and the data contained herein was prepared by me or under my direct supervision.

\_\_\_\_\_  
SIGNATURE DATE

Registration No. \_\_\_\_\_

- Land Surveyor,  Professional Engineer
- County Surveyor,  County Engineer

OFFICE OF THE REGISTER OF DEEDS  
County of MARTIN

I hereby certify that this document was filed in the Reg. of Deeds office at \_\_\_\_\_M. on the

\_\_\_\_\_day of \_\_\_\_\_A.D., 19\_\_\_\_  
Register of Deeds \_\_\_\_\_

By \_\_\_\_\_, Deputy

DOCUMENT NO. \_\_\_\_\_