

# CERTIFICATE OF LOCATION OF GOVERNMENT CORNER

NASHVILLE TWP  
SOUTH QUARTER

Corner of Section 8, Township 104N, Range 29W, 5th P.M.

STATE OF MINNESOTA, County of MARTIN

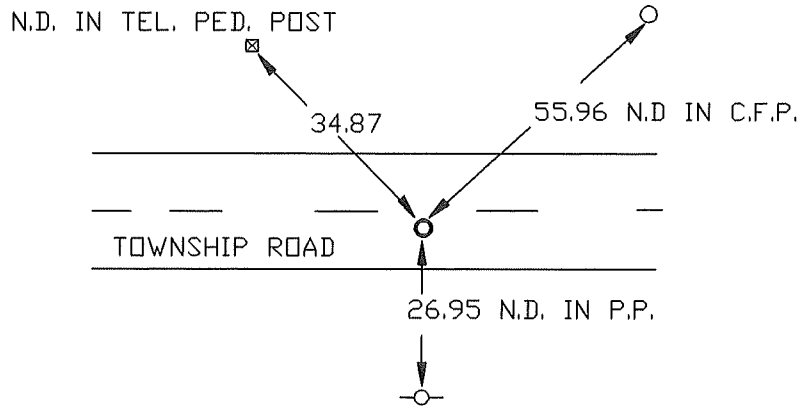
At the corner location shown on the sketch:

On 5-23-97 found a Stone "+" (23" Deep) Drilled Hole In Stone.  
DATE

left monument as found,  lowered monument,  removed monument (explain)

On 5-23-97 Placed a 5/8" \* 24" Iron Rod W/Alum. Cap  
DATE  
Over Stone (4" Deep).

## SKETCH OF REFERENCE TIES



Statement of evidence relative to this corner location is on back of page.

I hereby certify that this document and the data contained herein was prepared by me or under my direct supervision.

\_\_\_\_\_  
SIGNATURE                      DATE

Registration No. \_\_\_\_\_

- Land Surveyor,                       Professional Engineer
- County Surveyor,                     County Engineer

OFFICE OF THE REGISTER OF DEEDS  
County of MARTIN

I hereby certify that this document was filed in the Reg. of Deeds office at \_\_\_\_\_M. on the

\_\_\_\_\_ day of \_\_\_\_\_ A.D., 19\_\_\_\_

Register of Deeds \_\_\_\_\_

By \_\_\_\_\_, Deputy

DOCUMENT NO. \_\_\_\_\_