

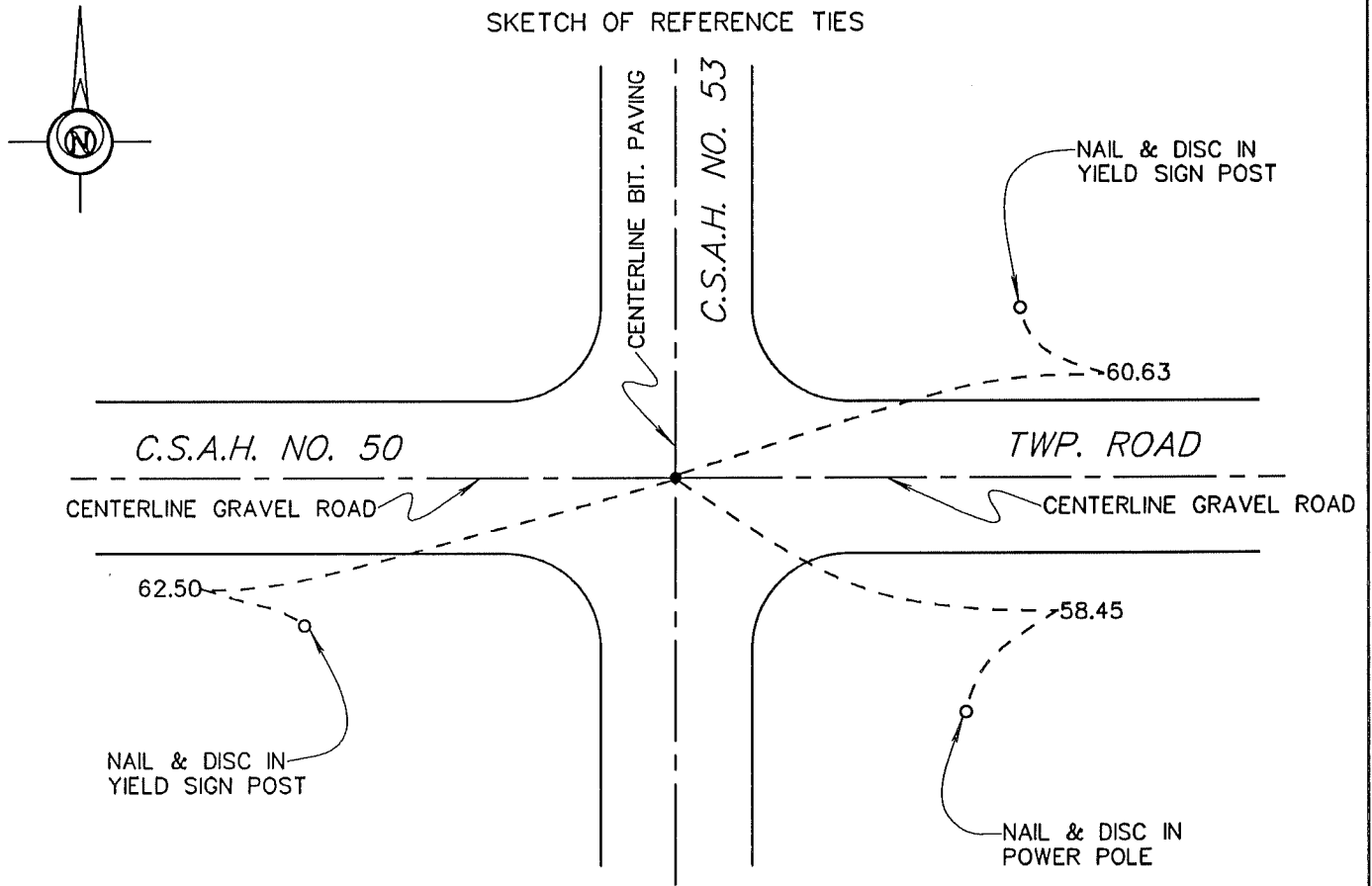
# CERTIFICATE OF LOCATION OF GOVERNMENT CORNER

SOUTHEAST Corner of Section 7, Township 104 N., Range 29 W., 5TH P.M.  
STATE OF MINNESOTA, County of MARTIN

At the corner location shown on the sketch:

- On 7-29-93 found a RAILROAD SPIKE IN THE BITUMINOUS PAVING (SURFACE)  
DATE
- left monument as found,  lowered monument,  removed monument (explain)
- On \_\_\_\_\_ placed a \_\_\_\_\_  
DATE

SKETCH OF REFERENCE TIES



Statement of evidence relative to this corner location is on back of page.

I hereby certify that this document and the data contained herein was prepared by me or under my direct supervision.

John Madson 5/14/96  
SIGNATURE DATE

Registration No. 13593

- Land Surveyor,  Professional Engineer
- County Surveyor,  County Engineer

OFFICE OF THE COUNTY RECORDER

County of MARTIN

I hereby certify that this document was filed in the Co. Recorders Office at \_\_\_\_\_ M. on the \_\_\_\_\_ day of \_\_\_\_\_ A.D., 19\_\_\_\_.

County Recorder \_\_\_\_\_

By \_\_\_\_\_, Deputy

DOCUMENT NO. \_\_\_\_\_

**S.E. Cor. Sec. 7, T. 104 N., R. 29 W.  
(Nashville Twp)**

**Statement of Evidence**

The corner was originally established during the Public Land Survey of 1855, by John O. Brunius.

According to the recorded Certificate of Location, Doc. No. 270141 Date, Aug. 26, 1977, the corner was a stone "+" (24" deep). A 3/4" steel rod was set over stone (3" deep). Monument was lost during construction in 1980 and a 3/4" steel rod was set in its place (12" deep). On July 7, 1982, a R.R. Spk was set over 3/4" rod.

On July 29, 1993, I found a R.R. Spk (surface)

The History shown was obtained from the Martin County Highway Dept. Tie Records and existing Certificates of Location, only. Further History information may be obtained from the Martin County Records Office.