

# CERTIFICATE OF LOCATION OF GOVERNMENT CORNER

NORTHEAST \_\_\_\_\_ Corner of Section 6, Township 104 N., Range 29 W., 5TH P.M.

STATE OF MINNESOTA, County of MARTIN

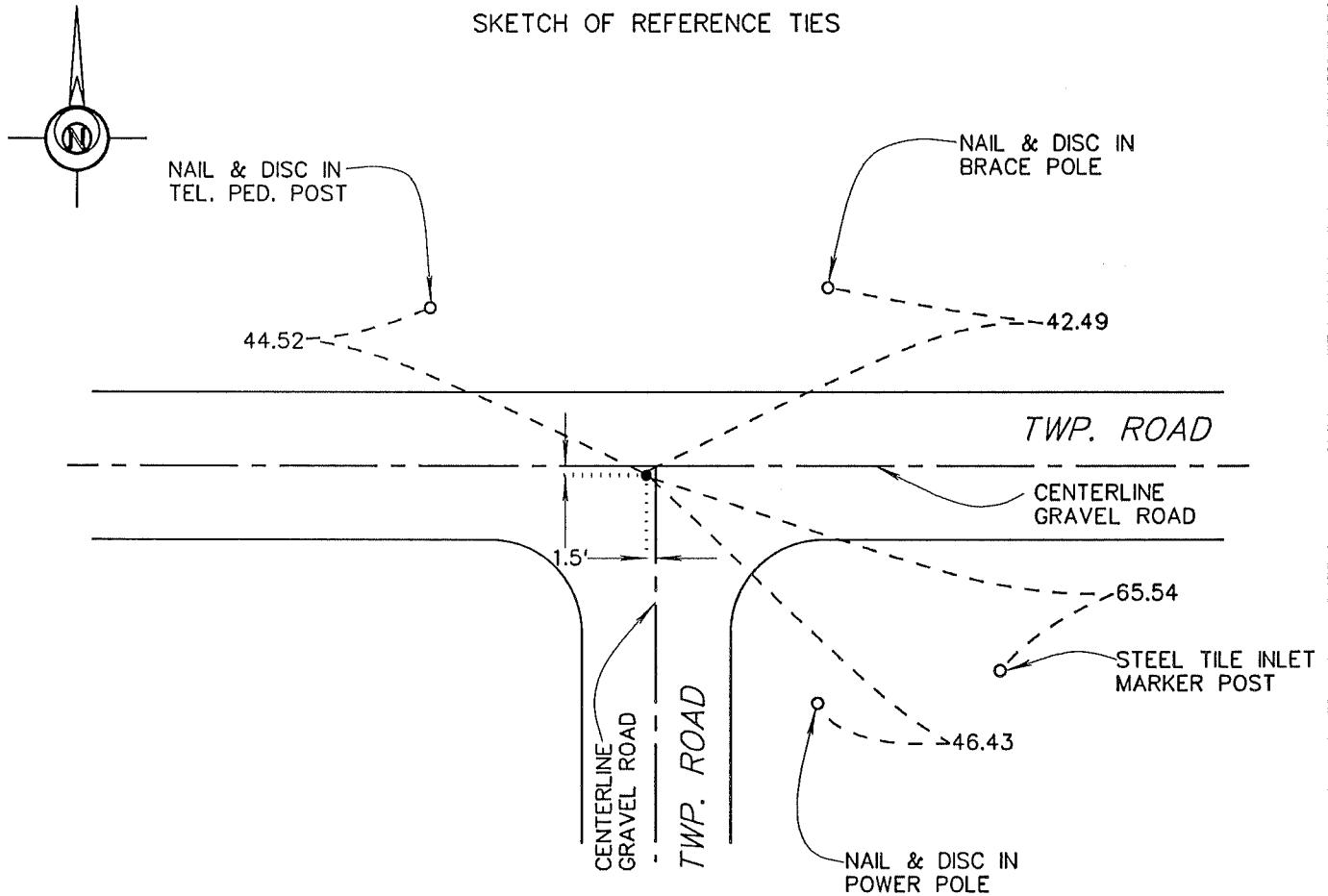
At the corner location shown on the sketch:

On 8-10-95 found a 1 1/2" IRON PIPE (10" DEEP).  
DATE

left monument as found,  lowered monument,  removed monument (explain)

On 8-10-95 placed a REPLACED WITH A 5/8" X 24" IRON MONUMENT WITH AN  
DATE  
ALUMINUM CAP (4" DEEP).

### SKETCH OF REFERENCE TIES



Statement of evidence relative to this corner location is on back of page.

I hereby certify that this document and the data contained herein was prepared by me or under my direct supervision.

John Madson 5/13/96  
SIGNATURE DATE

Registration No. 13593

- Land Surveyor,  Professional Engineer
- County Surveyor,  County Engineer

OFFICE OF THE COUNTY RECORDER  
County of MARTIN

I hereby certify that this document was filed in the Co. Recorders Office at \_\_\_\_\_ .M. on the \_\_\_\_\_ day of \_\_\_\_\_ A.D., 19\_\_\_\_.

County Recorder \_\_\_\_\_

By \_\_\_\_\_, Deputy

DOCUMENT NO. \_\_\_\_\_

**N.E. Cor., Sec. 6, T. 104 N., R. 29 W.  
(Nashville Twp)**

**Statement of Evidence**

The corner was originally established during the Public Land Survey of 1854, by John Everett.

The Martin County Highway Dept. Tie Records provided no history of corner.

On Aug. 10, 1995, I found a 1 1/2" iron pipe (10" deep). Set a 5/8" x 24" iron rod with alum. cap inside pipe (4" deep)

The History shown was obtained from the Martin County Highway Dept. Tie Records and existing Certificates of Location, only. Further History information may be obtained from the Martin County Recorder.