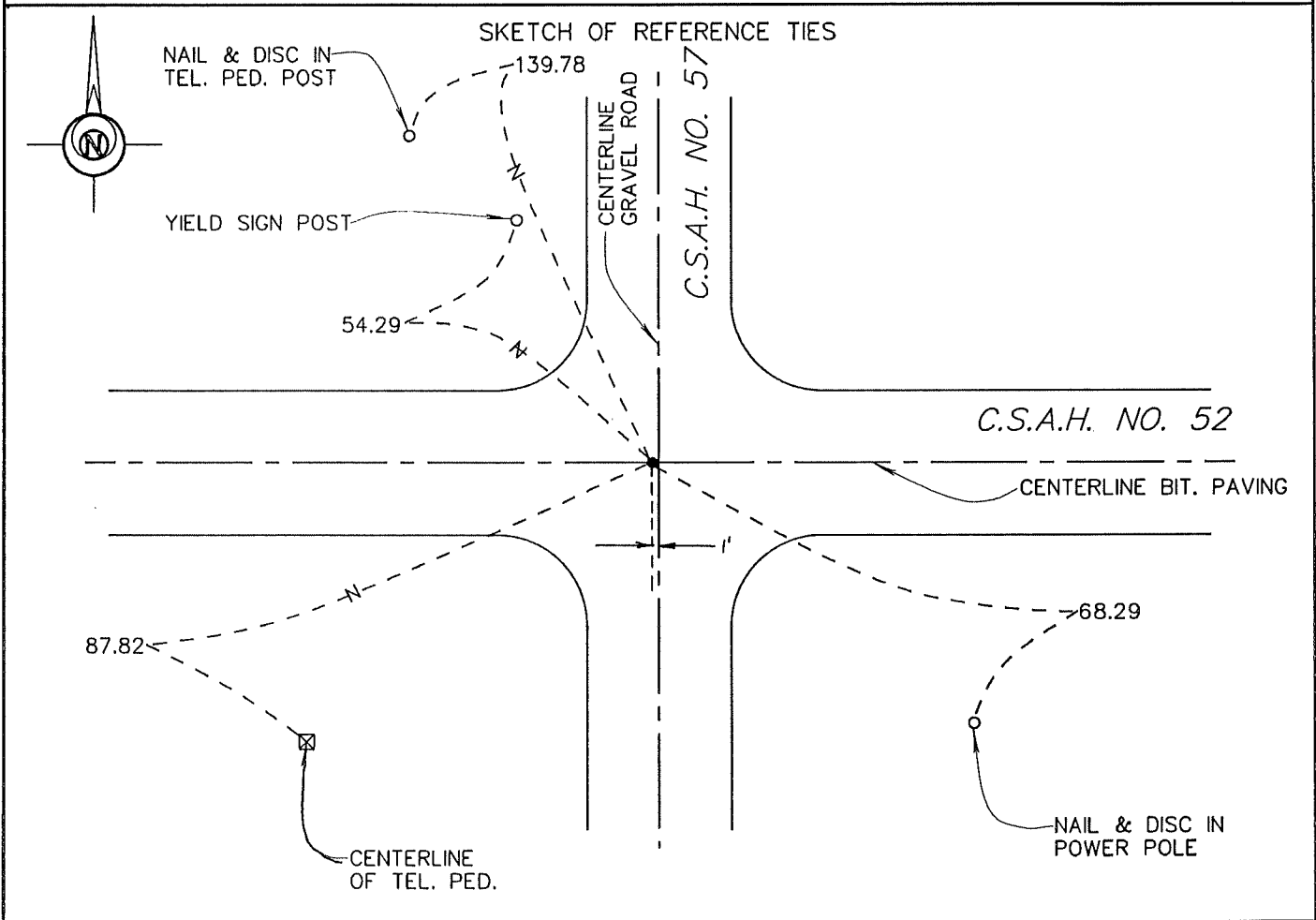


# CERTIFICATE OF LOCATION OF GOVERNMENT CORNER

SOUTHEAST Corner of Section 4, Township 104 N., Range 29 W., 5TH P.M.  
STATE OF MINNESOTA, County of MARTIN

At the corner location shown on the sketch:

- On 7-10-95 found a RAILROAD SPIKE IN THE BITUMINOUS PAVING (SURFACE).  
DATE
- left monument as found,  lowered monument,  removed monument (explain)
- On 7-10-95 placed a REPLACED WITH A 5/8" X 24" IRON MONUMENT WITH AN  
DATE  
ALUMINUM CAP (SURFACE).



Statement of evidence relative to this corner location is on back of page.

I hereby certify that this document and the data contained herein was prepared by me or under my direct supervision.

*John Madson* 5/13/96  
SIGNATURE DATE

Registration No. 13593

Land Surveyor,  Professional Engineer  
 County Surveyor,  County Engineer

OFFICE OF THE COUNTY RECORDER  
County of MARTIN

I hereby certify that this document was filed in the Co. Recorders Office at \_\_\_\_\_ M. on the \_\_\_\_\_ day of \_\_\_\_\_ A.D., 19\_\_\_\_.

County Recorder \_\_\_\_\_  
By \_\_\_\_\_, Deputy  
DOCUMENT NO. \_\_\_\_\_

**S.E. Cor., Sec. 4, T. 104 N., R. 29 W.  
(Nashville Twp)**

**Statement of Evidence**

The corner was originally established during the Public Land Survey of 1855, by John O. Brunius.

The Martin County Highway Dept. Tie Records indicate the corner was a stone "+" (26" deep), with a R.R. Spk over stone (18" deep), with a R.R. Spk over existing Spk (surface). Ties - 132.0 WSW = "+" in 24" RCP, 189.55 WSW = P.P., 178.2 NE = P.P., 150.0 N = 60d Spk in Twp. Road

On July 11, 1995, I found a R.R. Spk in bit. paving. Replaced R.R. Spk with a 5/8" x 24" iron rod with alum. cap (surface)

The History shown was obtained from the Martin County Highway Dept. Tie Records and existing Certificates of Location, only. Further History information may be obtained from the Martin County Recorder.