

# CERTIFICATE OF LOCATION OF GOVERNMENT CORNER

NASHVILLE TWP.  
SOUTHEAST

Corner of Section 34, Township <sup>104<sup>1</sup>/<sub>4</sub></sup> 102N., Range 29W., 5th P.M.

STATE OF MINNESOTA, County of MARTIN

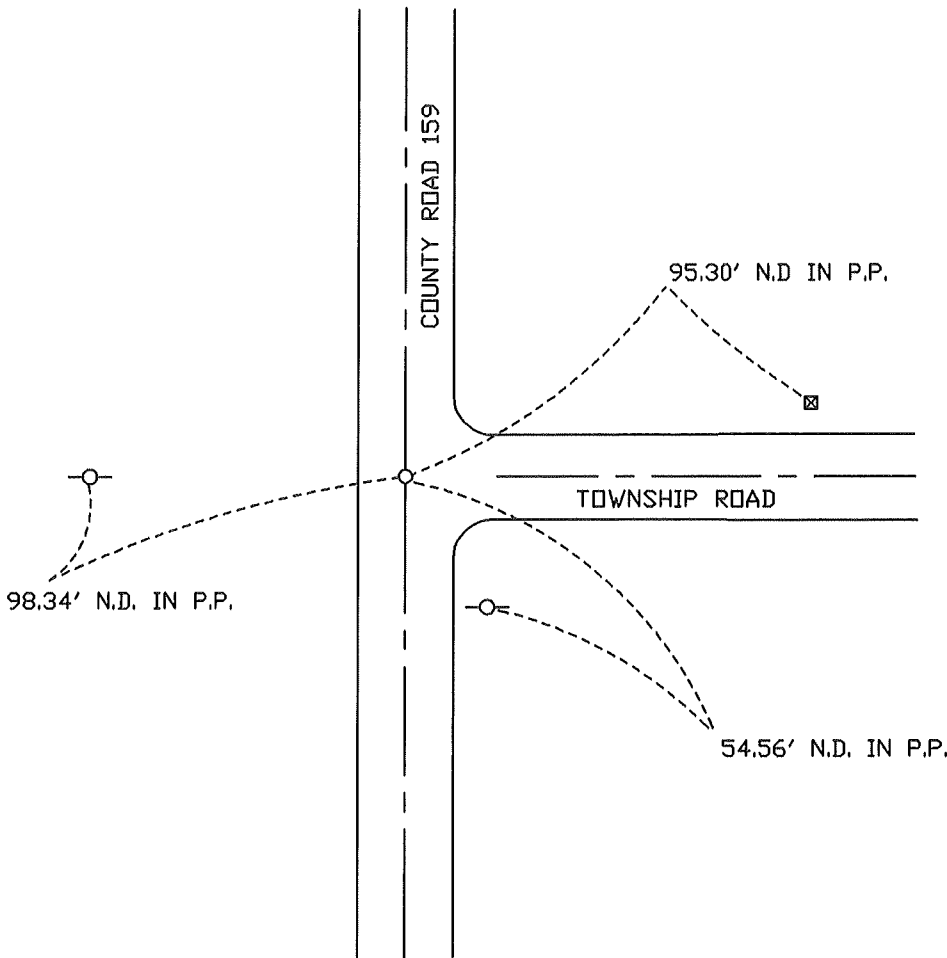
At the corner location shown on the sketch:

On 5-12-97 found a 5/8" \* 24" I.R. W/ALUM. CAP  
DATE

left monument as found,  lowered monument,  removed monument (explain)

On \_\_\_\_\_ Placed a \_\_\_\_\_  
DATE

## SKETCH OF REFERENCE TIES



Statement of evidence relative to this corner location is on back of page.

I hereby certify that this document and the data contained herein was prepared by me or under my direct supervision.

\_\_\_\_\_  
SIGNATURE DATE

Registration No. \_\_\_\_\_

- Land Surveyor,  Professional Engineer
- County Surveyor,  County Engineer

### OFFICE OF THE REGISTER OF DEEDS

County of \_\_\_\_\_

I hereby certify that this document was filed in the Reg. of Deeds office at \_\_\_\_\_, M. on the \_\_\_\_\_ day of \_\_\_\_\_ A.D. 19 \_\_\_\_\_

Register of Deeds \_\_\_\_\_

By \_\_\_\_\_, Deputy

DOCUMENT NO. \_\_\_\_\_