

# CERTIFICATE OF LOCATION OF GOVERNMENT CORNER

NASHVILLE TWP.

EAST QUARTER Corner of Section 31, Township <sup>104N</sup> 102N, Range 29W, 5th P.M.

STATE OF MINNESOTA, County of MARTIN

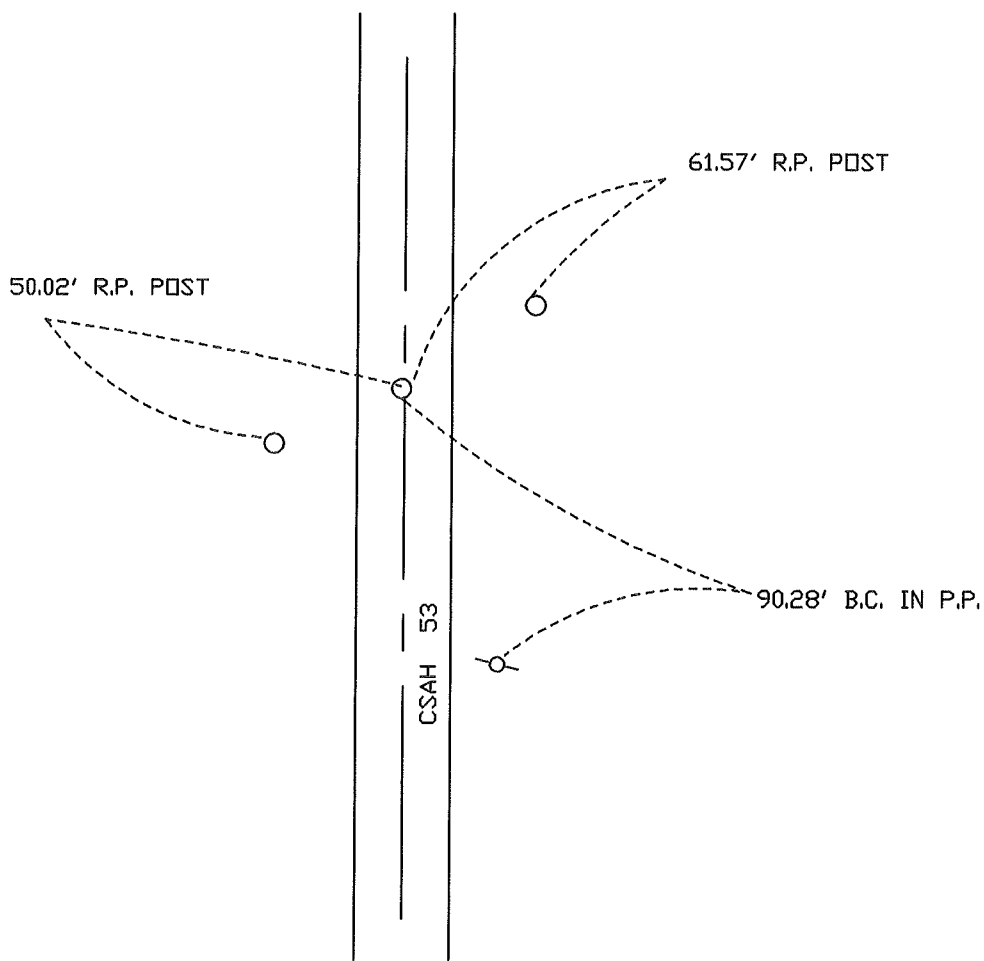
At the corner location shown on the sketch:

On 5-12-97 found a R.R. SPIKE IN BITUMINOUS PAVEMENT  
DATE

left monument as found,  lowered monument,  removed monument (explain)

On 5-12-97 placed a 5/8" X 24" I.R. W/ALUM. CAP OVER STONE (SURFACE)  
DATE

## SKETCH OF REFERENCE TIES



Statement of evidence relative to this corner location is on back of page.

I hereby certify that this document and the data contained herein was prepared by me or under my direct supervision.

\_\_\_\_\_  
SIGNATURE DATE

Registration No. \_\_\_\_\_

- Land Surveyor,  Professional Engineer
- County Surveyor,  County Engineer

OFFICE OF THE REGISTER OF DEEDS  
County of \_\_\_\_\_

I hereby certify that this document was filed in the Reg. of Deeds office at \_\_\_\_\_ M. on the \_\_\_\_\_ day of \_\_\_\_\_ A.D., 19\_\_\_\_

Register of Deeds \_\_\_\_\_  
By \_\_\_\_\_, Deputy  
DOCUMENT NO. \_\_\_\_\_