

CERTIFICATE OF LOCATION OF GOVERNMENT CORNER

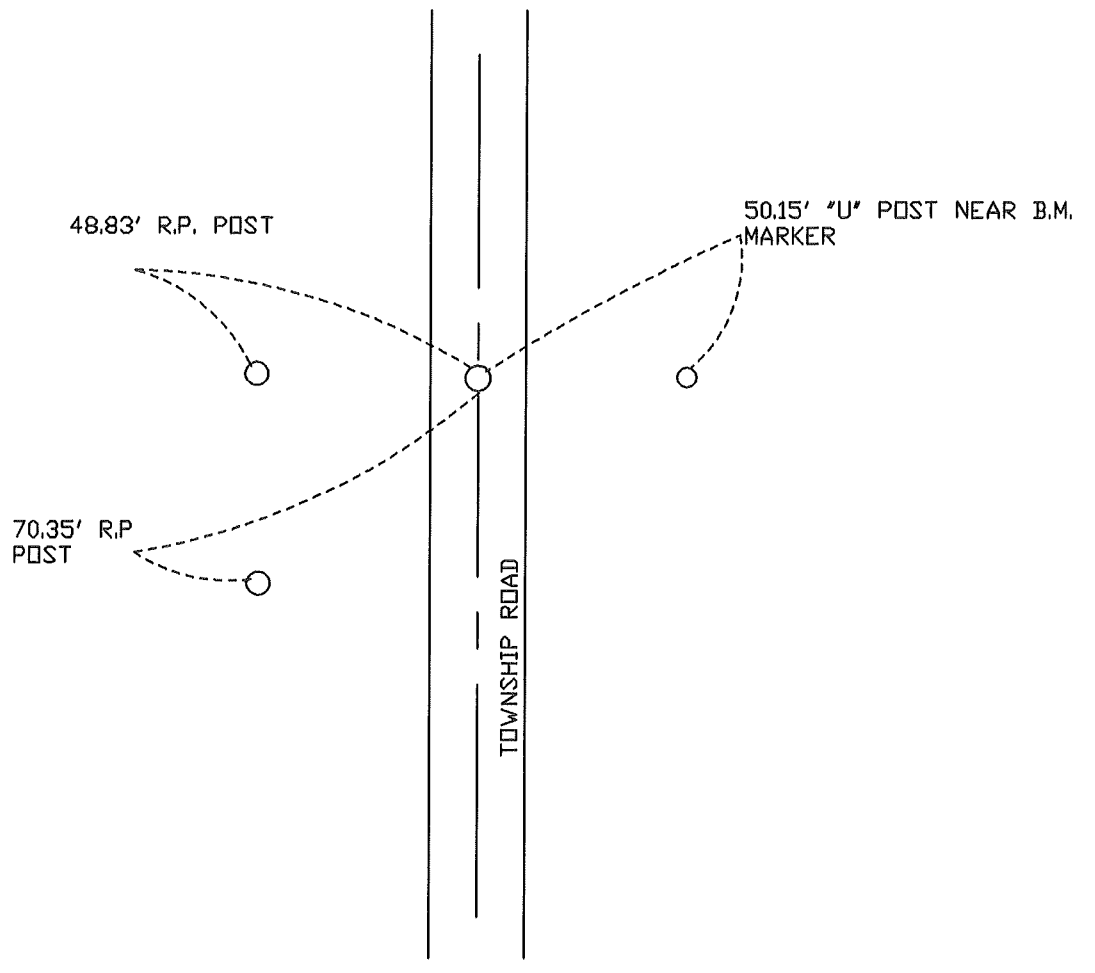
NASHVILLE TWP.
EAST QUARTER Corner of Section 30, Township ^{104N} 102N, Range 29W., 5th P.M.

STATE OF MINNESOTA, County of MARTIN

At the corner location shown on the sketch:

- On 5-12-97 found a R.R. SPIKE IN BIT, PAVEMENT
DATE
- left monument as found, lowered monument, removed monument (explain)
- On 5-12-97 Placed a 5/8" * 24" I.R. W/ALUM. CAP (SURFACE).
DATE

SKETCH OF REFERENCE TIES



Statement of evidence relative to this corner location is on back of page.

I hereby certify that this document and the data contained herein was prepared by me or under my direct supervision.

SIGNATURE DATE

Registration No. _____

- Land Surveyor, Professional Engineer
- County Surveyor, County Engineer

OFFICE OF THE REGISTER OF DEEDS
County of _____

I hereby certify that this document was filed in the Reg. of Deeds office at _____ M. on the _____ day of _____ A.D., 19____

Register of Deeds _____

By _____, Deputy

DOCUMENT NO. _____