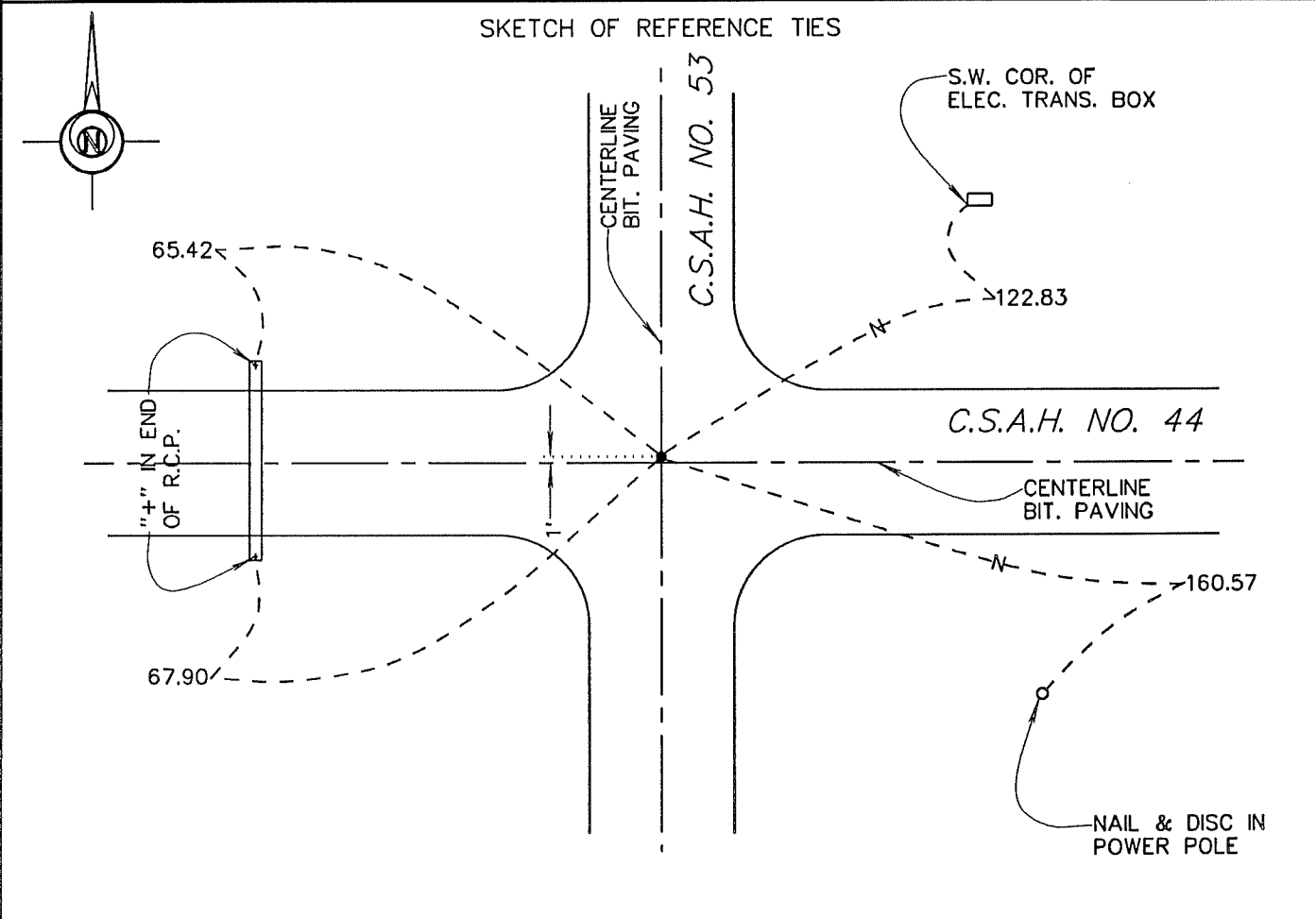


# CERTIFICATE OF LOCATION OF GOVERNMENT CORNER

SOUTHEAST Corner of Section 30, Township 104 N., Range 29 W., 5TH P.M.  
STATE OF MINNESOTA, County of MARTIN

At the corner location shown on the sketch:

- On 7-10-95 found a RAILROAD SPIKE IN BITUMINOUS (SURFACE).  
DATE
- left monument as found,  lowered monument,  removed monument (explain)
- On 7-10-95 placed a REPLACED WITH A 5/8" X 30" IRON MONUMENT WITH AN  
DATE  
ALUMINUM CAP (SURFACE).



Statement of evidence relative to this corner location is on back of page.

I hereby certify that this document and the data contained herein was prepared by me or under my direct supervision.

John Madson 5/13/96  
SIGNATURE DATE

Registration No. 13593

- Land Surveyor,  Professional Engineer
- County Surveyor,  County Engineer

OFFICE OF THE COUNTY RECORDER  
County of MARTIN

I hereby certify that this document was filed in the Co. Recorders Office at \_\_\_\_\_ M. on the \_\_\_\_\_ day of \_\_\_\_\_ A.D., 19\_\_\_\_.

County Recorder \_\_\_\_\_  
By \_\_\_\_\_, Deputy  
DOCUMENT NO. \_\_\_\_\_

**S.E. Cor. Sec. 30, T. 104 N., R. 29 W.  
(Nashville Twp)**

**Statement of Evidence**

The corner was originally established during the Public Land Survey of 1855, by John O. Brunius.

According to the recorded Certificate of Location, Doc. No. 270146 Date, June 27, 1950, the corner was a stone "+" (18" deep). On June 12, 1964, a conc. block was set over stone (6" deep). In April, 1966, a 3/4" steel rod was set over block (surface). On July 7, 1982, a 3/4" steel rod was found.

On July 10, 1995, I found a R.R. Spk in bit. paving, in accordance with previous ties. Replaced R.R. Spk with a 5/8" x 24" iron rod with alum cap (surface)

The History shown was obtained from the Martin County Highway Dept. Tie Records and existing Certificates of Location, only. Further History information may be obtained from the Martin County Recorders Office.