

CERTIFICATE OF LOCATION OF GOVERNMENT CORNER

SOUTHEAST Corner of Section 3, Township 104 N., Range 29 W., 5TH P.M.

STATE OF MINNESOTA, County of MARTIN

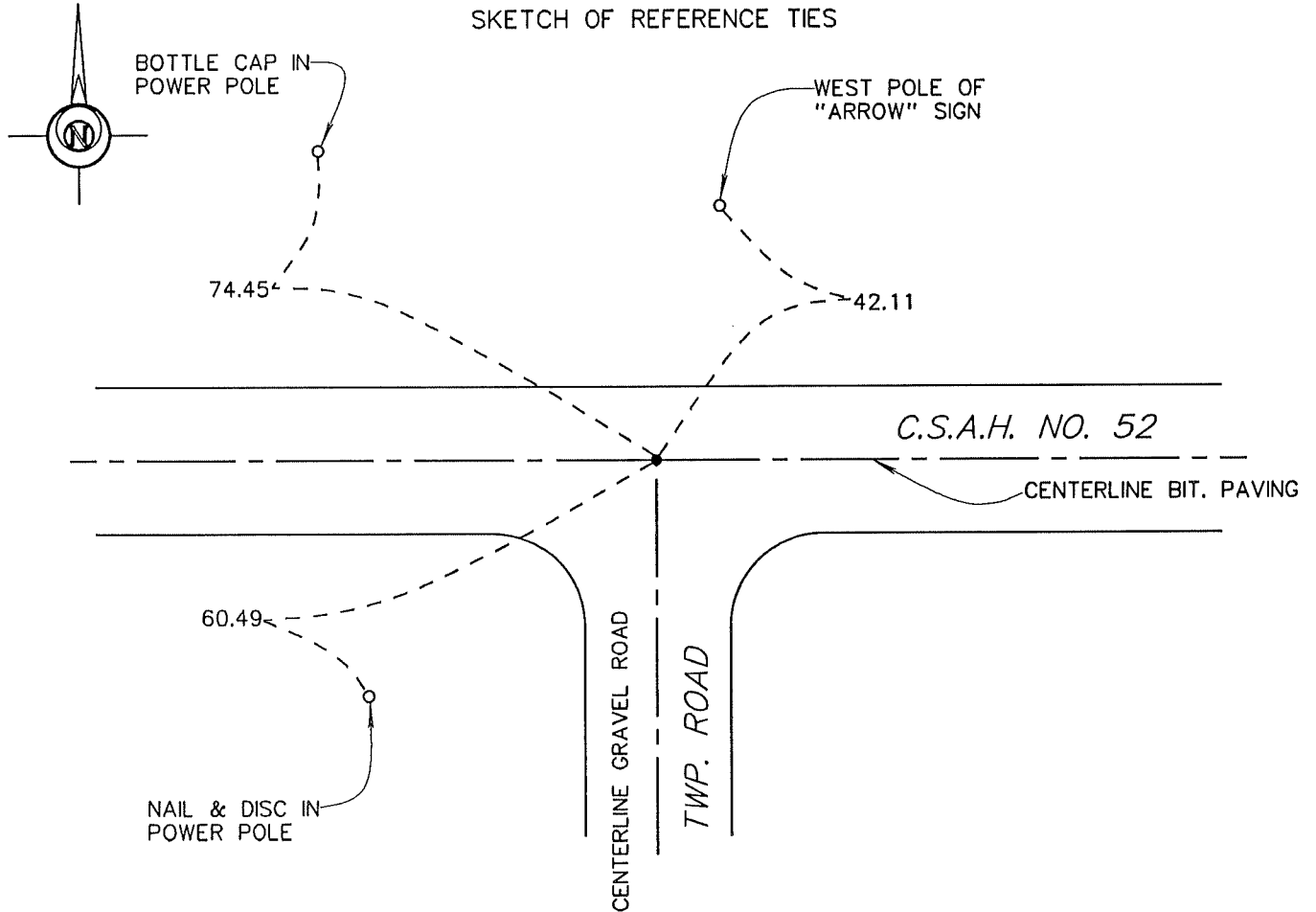
At the corner location shown on the sketch:

On 7-29-93 found a RAILROAD SPIKE IN THE BITUMINOUS PAVING (SURFACE)
DATE

left monument as found, lowered monument, removed monument (explain)

On _____ placed a _____
DATE

SKETCH OF REFERENCE TIES



Statement of evidence relative to this corner location is on back of page.

I hereby certify that this document and the data contained herein was prepared by me or under my direct supervision.

John Madson 5/14/96
SIGNATURE DATE

Registration No. 13593

- Land Surveyor, Professional Engineer
- County Surveyor, County Engineer

OFFICE OF THE COUNTY RECORDER
County of MARTIN

I hereby certify that this document was filed in the Co. Recorders Office at _____ M. on the _____ day of _____ A.D., 19____.

County Recorder _____
By _____, Deputy
DOCUMENT NO. _____

**S.E. Cor. Sec. 3, T. 104 N., R. 29 W.
(Nashville Twp)**

Statement of Evidence

The corner was originally established during the Public Land Survey of 1855, by John O. Brunius.

According to the recorded Certificate of Location, Doc. No. 250927 Date, May 23, 1977, the corner was a steel rod in bit. paving.

The Martin County Highway Dept. Tie Records indicated the corner was a stone "+" (24" deep), with 2 lathes over, with 1/2" rerod over. Ties - 189.4 SE = P.P., 135.1 NW = 36" Ash Tree, 131.6 NE = S.E. cor. of barn foundation, 100.0 S = 60d Spk.

On July 29, 1993, I found a R.R. Spk (surface) in accordance with Certificate of Location ties.

The History shown was obtained from the Martin County Highway Dept. Tie Records and existing Certificates of Location, only. Further History information may be obtained from the Martin County Records Office.