

# CERTIFICATE OF LOCATION OF GOVERNMENT CORNER

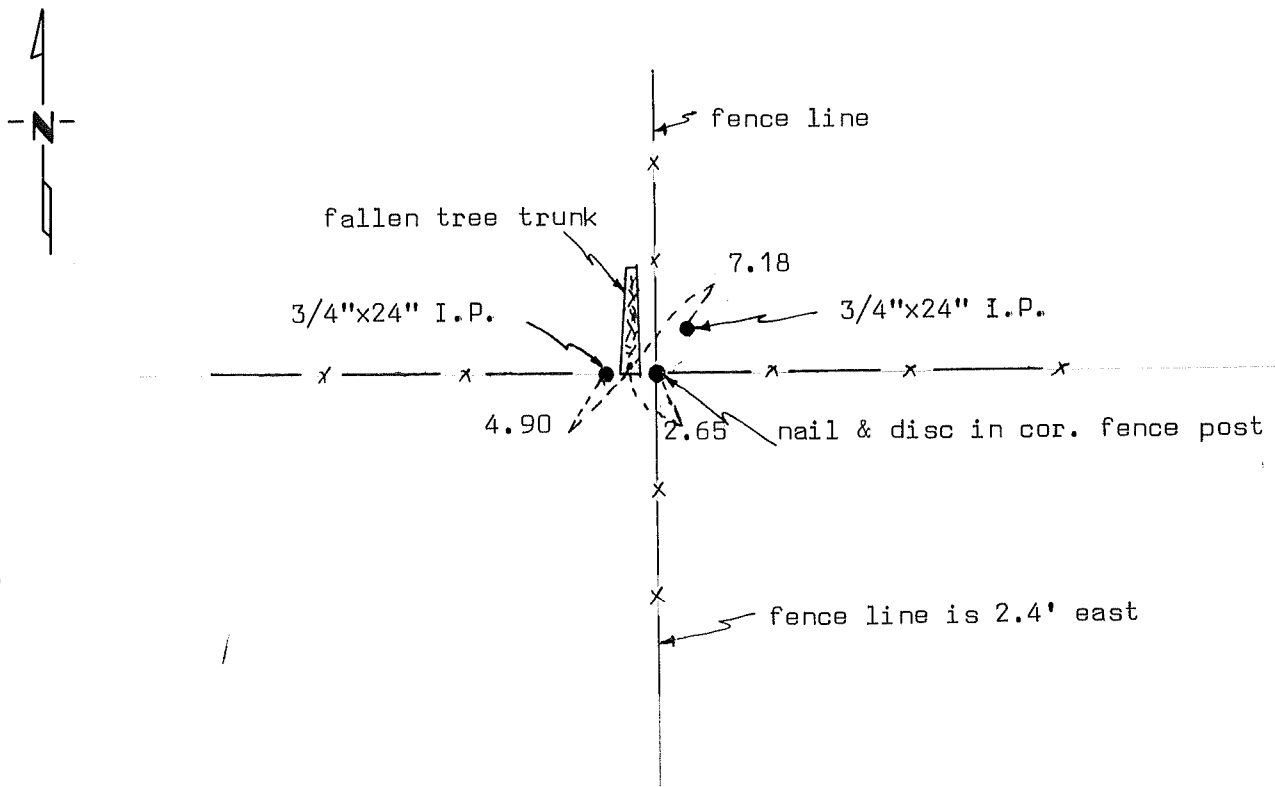
CENTER \_\_\_\_\_ Corner of Section 24, Township 104, Range 29, 5th P.M.

STATE OF MINNESOTA, County of MARTIN

At the corner location shown on the sketch:

- On \_\_\_\_\_ found a \_\_\_\_\_  
DATE
- left monument as found,  lowered monument,  removed monument (explain)
- On 12/8/82 placed a spike (large nail) in a fallen tree trunk where  
DATE corner would be located - did section breakdown

### SKETCH OF REFERENCE TIES



Statement of evidence relative to this corner location is on back of page.

I hereby certify that this document and the data contained herein was prepared by me or under my direct supervision.

Richard Danielson 12-8-82  
SIGNATURE DATE

Registration No. 9639

- Land Surveyor,  Professional Engineer
- County Surveyor,  County Engineer

OFFICE OF THE REGISTER OF DEEDS  
County of MARTIN

I hereby certify that this document was filed in the Reg. of Deeds office at \_\_\_\_\_ .M. on the \_\_\_\_\_ day of \_\_\_\_\_ A.D., 19 \_\_\_\_\_

Register of Deeds David Johnson  
By \_\_\_\_\_, Deputy

DOCUMENT NO. \_\_\_\_\_

Statement of Evidence:

Previous Ties

none

On 12/8/82 County Surveyor's (Richard Danielson) field crew set a spike (large nail) at computed location of center of section by section breakdown. Field crew found all necessary corners needed to do section breakdown. Crew couldnot set corner in ground because a large tree trunk was located at same.

rc rich danielson