

# CERTIFICATE OF LOCATION OF GOVERNMENT CORNER

NASHVILLE TWP.

SOUTH EAST Corner of Section 24, Township 104<sup>N</sup>, Range 29W., 5th P.M.

STATE OF MINNESOTA, County of MARTIN

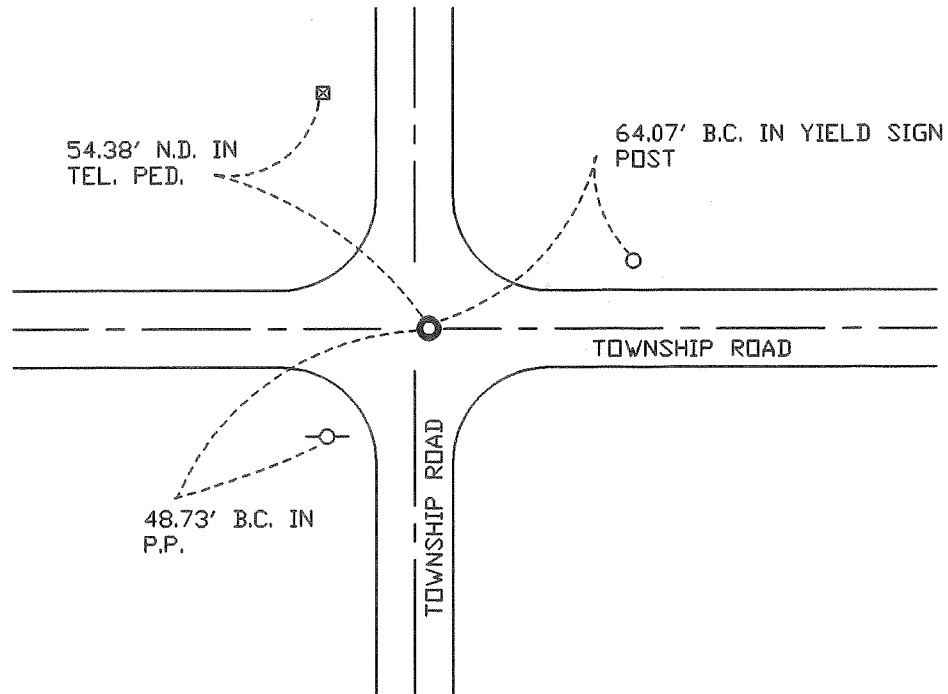
At the corner location shown on the sketch:

On 5-13-97 found a 3/4" \* 24" I.P. (4" DEEP)  
DATE

left monument as found,  lowered monument,  removed monument (explain)

On 5-13-97 Placed a 5/8" \* 24" I.R. W/ALUM. CAP (4" DEEP)  
DATE

## SKETCH OF REFERENCE TIES



Statement of evidence relative to this corner location is on back of page.

I hereby certify that this document and the data contained herein was prepared by me or under my direct supervision.

\_\_\_\_\_  
SIGNATURE DATE

Registration No. \_\_\_\_\_

- Land Surveyor,  Professional Engineer
- County Surveyor,  County Engineer

OFFICE OF THE REGISTER OF DEEDS  
County of \_\_\_\_\_

I hereby certify that this document was filed in the Reg. of Deeds office at \_\_\_\_\_ M. on the \_\_\_\_\_ day of \_\_\_\_\_ A.D., 19\_\_\_\_

Register of Deeds \_\_\_\_\_

By \_\_\_\_\_, Deputy

DOCUMENT NO. \_\_\_\_\_

Statement of Evidence:

PREVIOUS TIES

May 28, 1901 Geo. E. Sawyer, County Surveyor

found sandstone 15"x12"x5" at surface & crockery 24" deep

Martin County Highway Department Ties

stone 'x' 47.50NE. = Tel Pole

50.00SE. = cor F. P.

Ties were gone

On 12/1/82 Richard Danielson's field crew with the help of a backhoe found 15"x12"x5" sandstone 'x' 36" deep. The crew placed a 3/4"x24" iron pipe above stone 4" deep