

# CERTIFICATE OF LOCATION OF GOVERNMENT CORNER

NASHVILLE TWP.  
EAST QUARTER

Corner of Section 24, Township <sup>104M</sup> 102N, Range 29W, 5th P.M.

STATE OF MINNESOTA, County of MARTIN

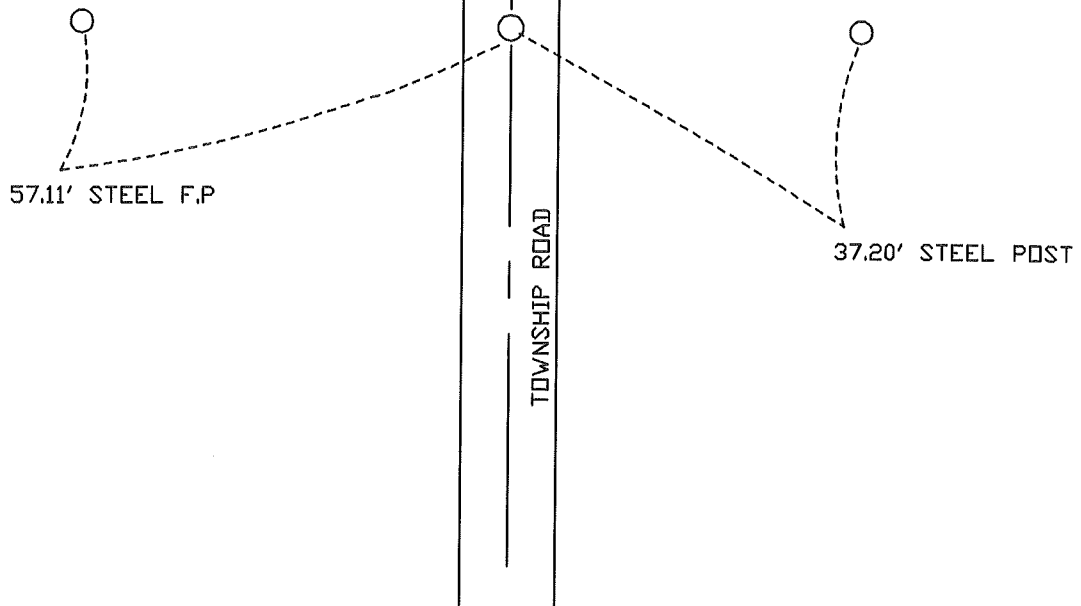
At the corner location shown on the sketch:

On 5-15-97 found a 1" I.P.(8" DEEP)  
DATE

left monument as found,  lowered monument,  removed monument (explain)

On 5-15-97 Placed a 5/8" \* 24" I.R. W/ALUM. CAP (4" DEEP)  
DATE

## SKETCH OF REFERENCE TIES



Statement of evidence relative to this corner location is on back of page.

I hereby certify that this document and the data contained herein was prepared by me or under my direct supervision.

SIGNATURE \_\_\_\_\_ DATE \_\_\_\_\_

Registration No. \_\_\_\_\_

- Land Surveyor,  Professional Engineer
- County Surveyor,  County Engineer

OFFICE OF THE REGISTER OF DEEDS

County of \_\_\_\_\_

I hereby certify that this document was filed in the Reg. of Deeds office at

\_\_\_\_\_, M. on the

\_\_\_\_\_ day of \_\_\_\_\_ A.D., 19\_\_\_\_

Register of Deeds \_\_\_\_\_

By \_\_\_\_\_, Deputy

DOCUMENT NO. \_\_\_\_\_

## Statement of Evidence:

### PREVIOUS TIES

May 28, 1901 Geo. E. Sawyer, County Surveyor Book D Page 37  
found crockery 26" deep Identified by very rotten stakes beside a stone in  
grade. Well known corner. 2 rods E. to road fence

Martin County Highway Department Ties  
didnot have any ties

On 12/1/82 County surveyor's (Richard Danielson) field crew with the help of a  
backhoe found crockery deposit with stone on north side at 30" deep  
Crew set a 1"x20" iron pipe above crockery deposit.